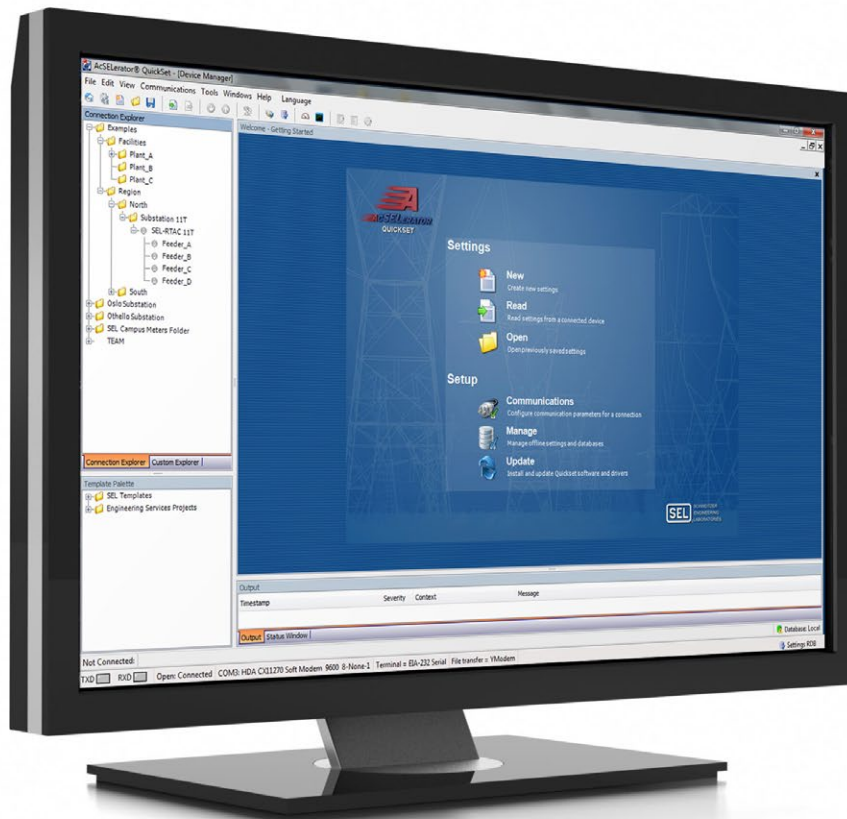


ACSELERATOR QuickSet®

SEL-5030 Software



Quickly and easily configure devices for power system protection, control, metering and monitoring

- Confidently create device or system designs with advanced visualization and management tools.
- Increase productivity and improve collaboration for multiple users with a centralized repository of device information.
- Simplify your workflow by customizing and choosing relevant tools that work the way you do.

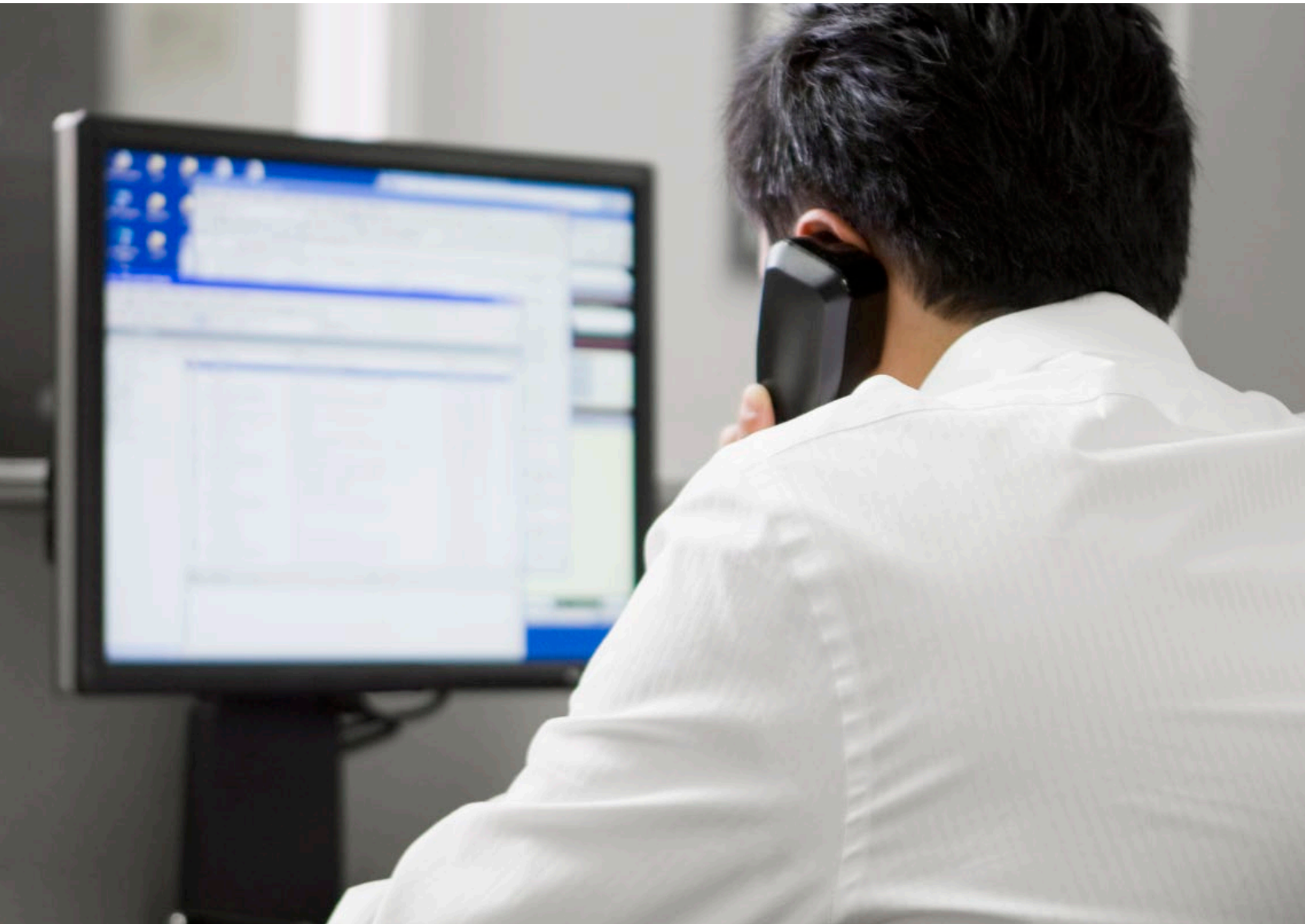


Product Overview

ACSELERATOR QuickSet SEL-5030 Software is a freely distributed software tool for engineers and technicians to quickly and easily configure devices for power system protection, control, metering, and monitoring. QuickSet is one component of the ACSELERATOR Software family, which helps you work more efficiently and manage processes by providing a common set of tools that improve commissioning and collaboration.

With advanced visualization and management features, QuickSet provides the flexibility to confidently configure a single device or design an entire system. You can create and edit settings, design graphical logic and templates, and access other tools to help you organize and commission devices in your system. Templates for protection, control, metering, automation, and SCADA make it easy to develop and apply engineering standards.

With a variety of customizable tools and plug-ins, QuickSet works the way you do, integrating seamlessly into your workflow to improve productivity.

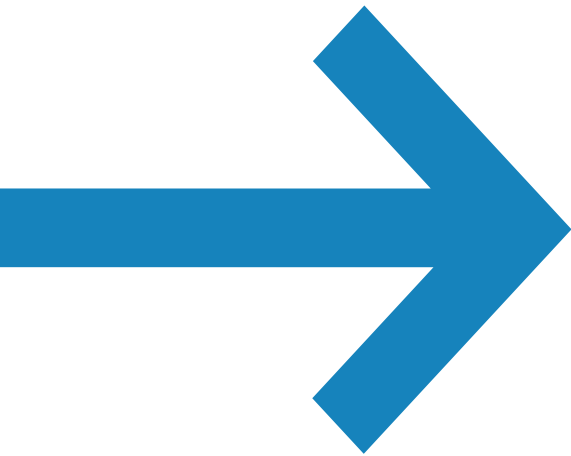


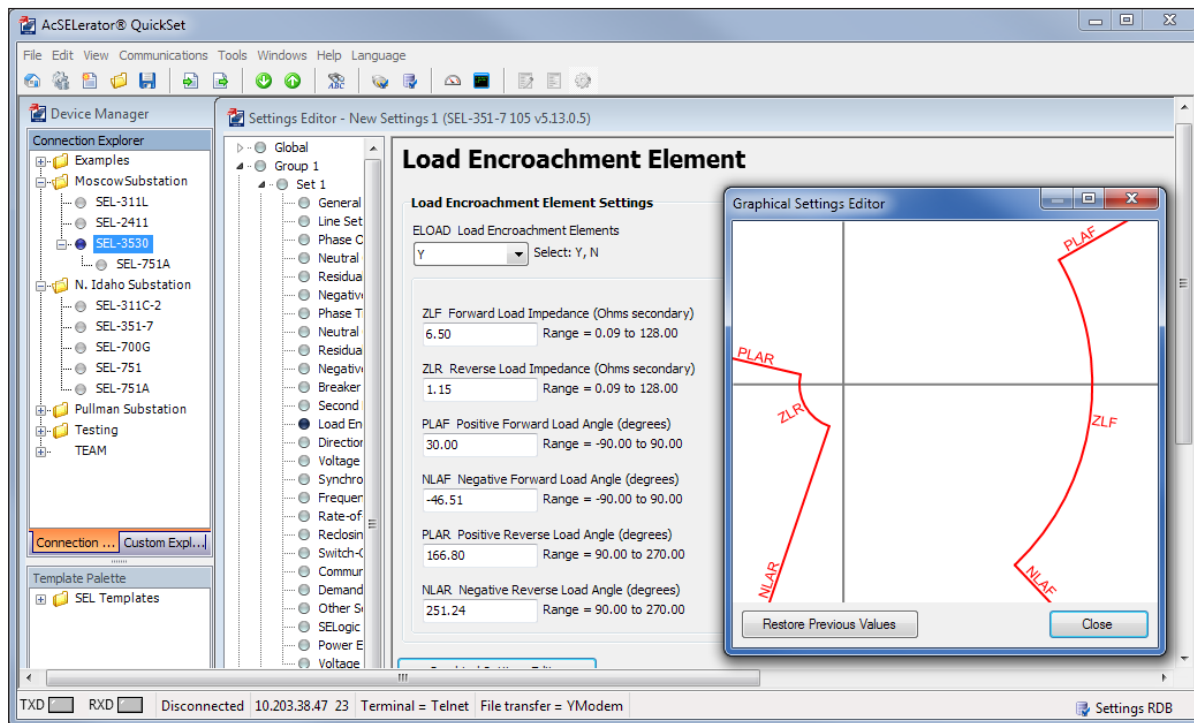
Simplify Your Workflow

QuickSet is built around the concept of a toolbox. The tools you need are easy to access and use, but they don't clutter your user interface when you don't want them. A variety of plug-ins and drivers are available to expand QuickSet's capabilities; simply install the tools you need as you need them. You can structure the workspace in QuickSet around how you work and what you need to accomplish.

Devices and settings are organized in a familiar explorer tree layout that can be readily customized. A tabbed workflow makes it easy to work on more than one device at a time and quickly switch between them. Copy and paste, drag and drop—all of the expected functions and keyboard shortcuts are available to make your task as efficient as possible.

QuickSet provides a powerful and complete solution for device configuration and deployment. The software makes it simple to move system designs and device settings from your desk into operation. After deploying your devices, you can provide automated retrieval and advanced analysis of power system data with ACSELERATOR TEAM® SEL-5045 Software, a licensed software tool that you install and configure within QuickSet.





Graphical Settings Editor

Design and Organize Device Settings

SEL designs full-featured devices to provide flexibility for a variety of applications. As such, there are numerous customizable settings available during the configuration process. QuickSet greatly simplifies setup and lifecycle management for multiple device models and versions.

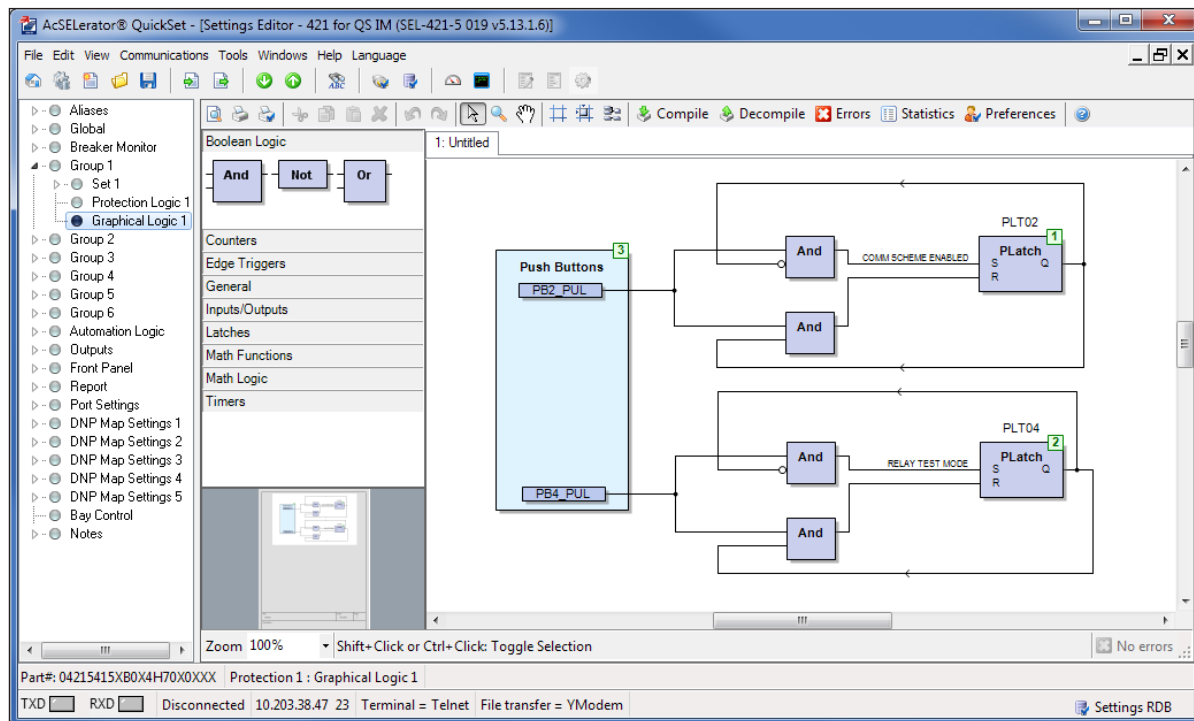
Settings are presented in logical groups, making it easy to quickly identify specific parameters. You can implement your changes with confidence—QuickSet helps you save time and avoid mistakes by automatically verifying each setting and flagging parameters that are out of range or not permitted. Using QuickSet, you can develop settings offline with easy-to-use configuration tools and then connect to your devices to transfer settings and monitor performance.

With all of your settings data in one place, it's easy to manage multiple devices across an organization. You can work more efficiently by associating user comments with device settings and generating custom reports to export settings information. QuickSet is designed to integrate seamlessly into your workflow.

Device Manager

The Device Manager tool in QuickSet increases productivity by helping you organize all of your relevant device information in a central location. Devices are organized in a standard file explorer tree for easy viewing. QuickSet compiles configuration settings, event data, communications, documents, security profiles, and application information so that you can quickly access the data you need. Customization options provide the flexibility to organize your system to meet your needs, while integrated user account management keeps your settings secure.

The Device Manager is also the integration point for TEAM, which automatically collects and stores event and metering data from configured devices. TEAM provides advanced viewing and analysis of these data with powerful tools, such as a timeline viewer and Sequence of Events viewer. Since TEAM is configured within QuickSet's familiar interface, all of the device management tools you need are in one location, reducing the learning curve and enhancing efficiency.



Graphical Logic Editor (GLE)

Device Management for Workgroups

Increase task efficiency and save time for you and your work team with the QuickSet Device Management for Workgroups capability. Having a centralized database that can be accessed securely by multiple users means you can design, commission, and operate from multiple computers within your network. Users can always be aware of the current state of a project and can contribute to it using QuickSet tools for settings comparisons, custom settings version archiving, intelligent electronic device (IED) configuration additions or changes, and all of the other features of Device Manager.

QuickSet GLE

To make designing custom logic even easier, the GLE provides an intuitive computer-aided design (CAD) interface for developing device logic in a format similar to IEC 61131 function block diagrams. You can simplify logic configuration in supported relays with drag-and-drop tools for creating diagrams and SELogic® control equations specific to your application. Saving or printing the function block diagrams provides a permanent engineering record of logic designs.

Graphical Settings Editor

To accommodate user preferences and make your changes more apparent, the graphical settings editor provides a visual representation of your values. This editor shows you

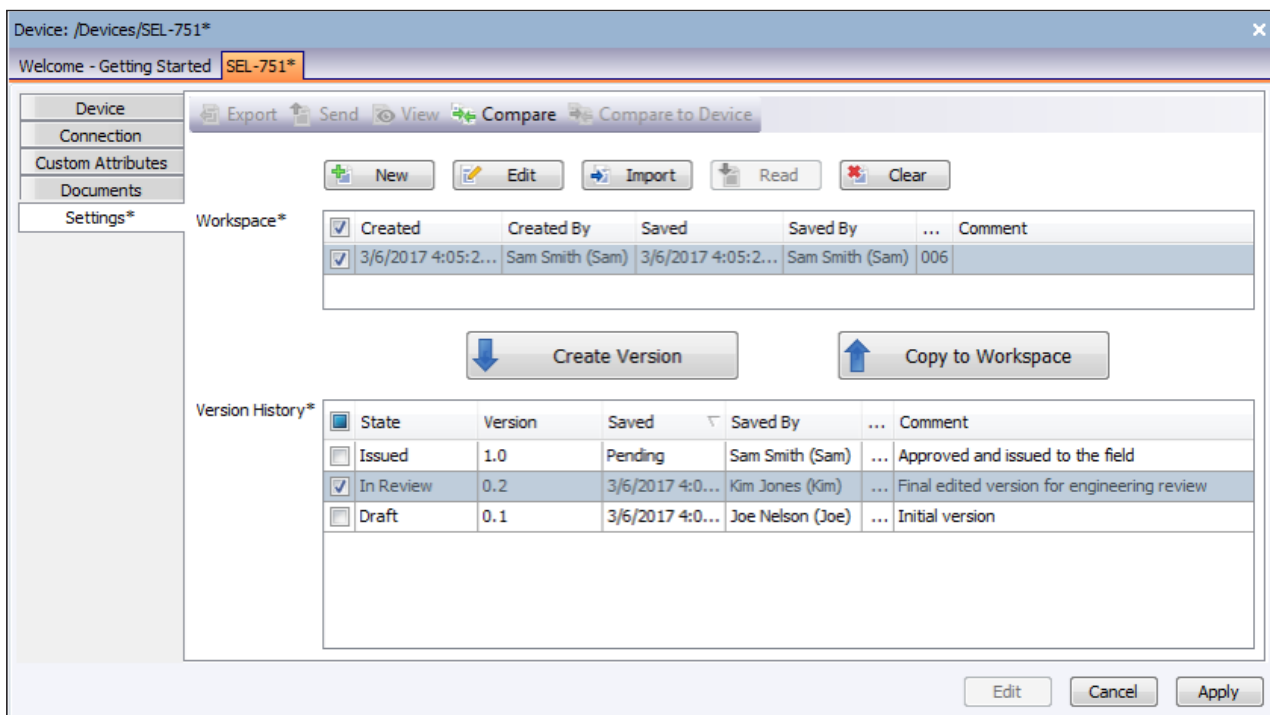
the corresponding graphical movements as you enter your setting changes in the dialog boxes.

QuickSet Design Templates

Quickly and confidently deploy new and existing devices by distributing QuickSet Design Templates for consistent setup and reduced configuration times. You can create custom templates to lock settings so they match your standards or to lock and hide unused settings. This simplifies new installations and helps avoid entry errors.

Each template consists of a device settings file, design template equations, and template settings with customized labels and comments. If your system has multiple devices of the same type, you can apply a design template to set and lock all settings that will remain constant across the devices. The template limits the modification of settings to those that you determine will vary between devices. It is also possible to create a custom range for each setting to limit the acceptable input values based on your needs.

Additionally, QuickSet hides unused settings to minimize clutter and prevent unnecessary changes. With fewer settings to edit, you can save configuration time while maintaining your organization's standards and reducing the likelihood of costly mistakes.



Engineering Workflows and Version Management

Increase Productivity

In addition to settings management, QuickSet offers a variety of tools to simplify system analysis and enhance performance.

Firmware Loader

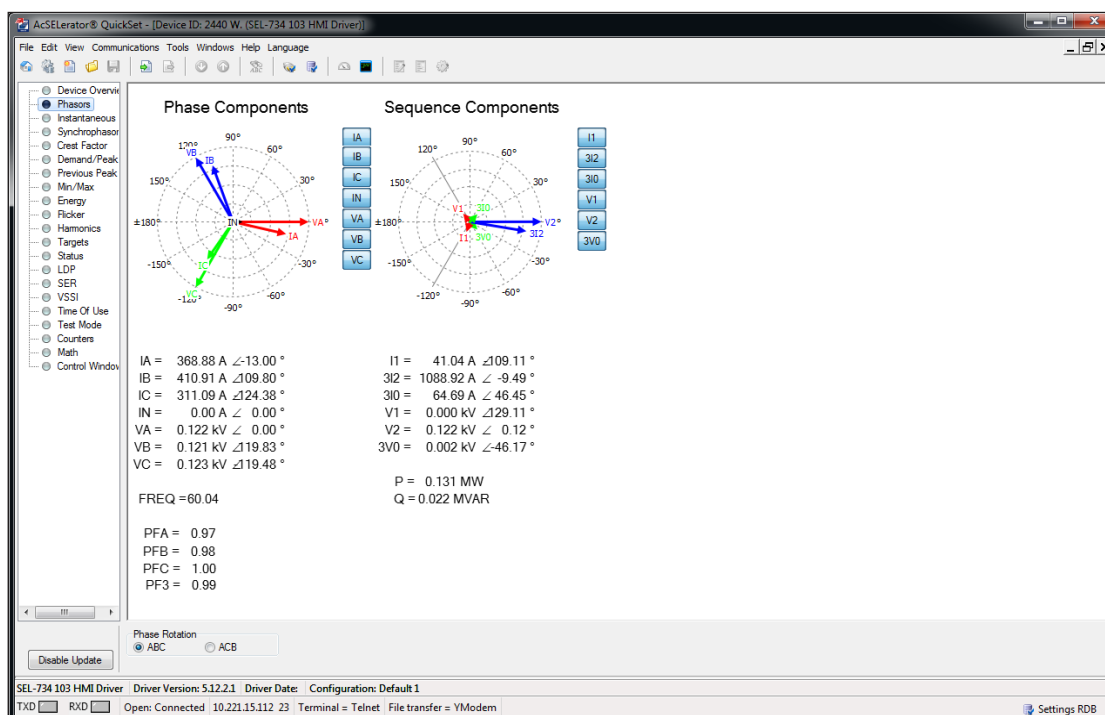
Save time with automated firmware management that is fast and simple. Up-to-date firmware is important to ensure you have the latest standards and protection in a constantly evolving industry. The firmware loader makes it easy to upgrade or downgrade firmware in connected devices while maintaining device settings.

Reporting

Seamlessly integrate QuickSet data into your company's workflow with customizable reporting tools. You can design, save, and export data to Microsoft Excel, HTML, or text formats. During configuration, QuickSet provides a wide variety of style sheets to accommodate the increased requirement for customized documentation.

Engineering Workflows and Version Management

Engineering departments commonly have a process for creating, tracking, approving, and deploying different versions of the configuration for an IED. The Device Manager includes simple tools for enabling your engineering workflow directly in the version tracking tool. Additionally, you can use the version history to record and review all previous versions of settings. By selecting one or more historical versions and the present IED settings, you can visually analyze all setting differences using the comparison tool. Having all of the versions neatly organized in the acSELErATOR database will save time and improve the accuracy of all auditing and reporting tasks.



QuickSet HMI

Compare, Convert, and Merge Tools

Amend multiple settings files using the included compare, convert, and merge tools. During commissioning, comparing settings with new, old, or modified values requires a great deal of effort. QuickSet helps reduce this load by quickly identifying which values are different. You can convert only the settings you want, edit any setting directly in the comparison view, or merge the files together and accept any settings changes.

Customizable HMI

Obtain pertinent device data locally or remotely with the customizable HMI. Automatic live updates provide fast visual information and eliminate the need to rely on command line inputs. You can view the operational status or history at your convenience and make adjustments as needed. A graphical representation of digital and analog information lets you verify and analyze device performance. The HMI interfaces are specific to each device.

Additional SEL Software Solutions

Additional SEL software solutions assist in designing, commissioning, monitoring, and analyzing your system.

ACSELERATOR TEAM

Automate the collection and reporting of power system data from multiple devices to a central location for easy access. Using TEAM, engineers and technicians can continuously monitor an entire system and quickly gather event and metering data. TEAM integrates into QuickSet through the Device Manager, providing all the tools you need for device management and monitoring in one convenient interface.

ACSELERATOR Architect® SEL-5032 Software

Easily configure and document IEC 61850 communications between devices from multiple suppliers.

ACSELERATOR RTAC® SEL-5033 Software

Configure the SEL Real-Time Automation Controller (RTAC) family of products. You can create projects,

insert and configure various protocols, map tags, write logic programs, and share settings between similarly deployed devices.

ACSELERATOR Diagram Builder™ SEL-5035 Software

Create custom web-based HMI displays and control screens for the RTAC and SEL-2240 Axion®. You can quickly visualize the data at design and during run time.

SEL-5601-2 SYNCHROWAVE® Event Software

Analyze SEL relay event reports and COMTRADE files to diagnose a protective relay's behavior during a power system fault.

SEL Compass®

Keep your software, drivers, and other important SEL documents up to date. An easy-to-use interface enables you to download updates directly to your computer on a schedule that you choose. You can install new device drivers directly from the web and share downloaded files internally throughout your company's network.

Specifications

QuickSet Minimum System Requirements

Supported Operating Systems	Microsoft Windows 10 (64-bit) Microsoft Windows 11 (64-bit) Microsoft Windows Server 2016 (64-bit) Microsoft Windows Server 2019 (64-bit) Microsoft Windows Server 2022 (64-bit)
Processor Speed	1 GHz or faster 2 GHz quad-core or faster (Device Manager Workstation and Database Server)
RAM	1 GB (32-bit) or 2 GB (64-bit) 4 GB or higher (Device Manager Workstation and Database Server)
Disk Space	1.5 GB (all options) or 3 GB if Microsoft .NET Framework is installed 20 GB (Device Manager Database Server)
Printer	Default printer installed for printing settings
Monitor	VGA 1024 x 768 or higher resolution monitor Note: For best viewing of the application windows and text, you may need to enter your Windows OS settings and adjust the screen resolution settings to make text and other items larger or smaller.
Other Peripherals	Mouse or other pointing device
Installation	Administrative privileges required for installation
Communications	Serial or Ethernet connection to allow communication with SEL devices
Language Support	Simplified Chinese, English, French, Portuguese, Russian, Spanish, and Turkish
Required Third-Party Software	Microsoft .NET Framework 4.6.1

SCHWEITZER ENGINEERING LABORATORIES

Making Electric Power Safer, More Reliable, and More Economical
+1.509.332.1890 | info@selinc.com | selinc.com

© 2024 by Schweitzer Engineering Laboratories, Inc.
PF00075 • 20241008

