

SEL-C808

62.5/125 μm Multimode Fiber-Optic Cables



Custom-Built Cables for Exceptional Performance in Critical Applications.

- Customization options allow for precise cable lengths to fit any application.
- Industry-leading optical performance with minimal insertion loss ensures data integrity even in harsh conditions.
- Quality testing on every cable guarantees fault-free operation.





Features and Benefits

Choice

Order terminated LC, SC, and ST® cables built to your length specifications, or terminate them onsite using the fiber termination toolkit. Choose from these cable types to match your applications:

- Standard-duty zipcord (one or two fibers) for indoor risers (SEL-C808Z) and for indoor plenum spaces (SEL-C808P)
- Heavy-duty, waterproof (SEL-C808G) for indoor or outdoor applications (two or four fibers)

Quality

Get best-in-class optical performance with LC, SC, and ST high-precision ceramic ferrule connectors that provides minimal insertion loss of 0.1 dB.

Safety and Reliability

Connect SEL fiber-optic transceivers and compatible fiber-optic ports on relays and controllers for safer serial communication with high data integrity. Complete fiber-optic Ethernet systems by connecting the Ethernet ports of switches, routers, multiplexers, relays, and more for high-speed, safe, and reliable network communications.



Technical Specifications

Parameter	C808Z01 Zipcord (1 fiber)	C808Z02 Zipcord (2 fibers)	C808P01 Zipcord (1 fiber)	C808P02 Zipcord (2 fibers)	C808G02 Heavy-Duty Waterproof (2 fibers)	C808G04 Heavy-Duty Waterproof (4 fibers)
Operating Temperature	-20° to +85°C		0° to +85°C		-40° to +85°C	
Fiber Material	Glass					
Wavelength	850/1300 nm					
Core/Cladding Diameters	62.5/125 µm					
Outside Cable Dimensions	2.9 mm (0.11 in) Diameter	2.8 x 5.6 mm (0.11 x 0.22 in)	2.9 mm (0.11 in) Diameter	2.8 x 5.6 mm (0.11 x 0.22 in)	9.1 (0.36 in) Diameter	
Nominal Weight	6.4 kg/km (4.3 lb/1000 ft)	12.8 kg/km (8.5 lb/1000 ft)	7.4 kg/km (5 lb/1000 ft)	14 kg/km (10 lb/1000 ft)	61 kg/km (41 lb/1000 ft)	
Maximum Tensile Loads (short-term)	220 N (50 lb)				2000 N (450 lb)	
Maximum Tensile Loads (long-term)	66 N (15 lb)				800 N (180 lb)	
Maximum Connector Pull Tension (LC, SC, and ST)	50 N (11 lb)					
Minimum Bend Radius (installation)	5 cm (2 in)				13 cm (5.2 in)	
Minimum Bend Radius (operation)	1.4 cm (0.55 in)				9.1 cm (3.6 in)	
Maximum Attenuation @ 850/1300 nm	3.5/1.5 dB/km					
UL® Rating	Riser-Rated (OFNR)		Plenum-Rated (OFNP)		Riser-Rated (OFNR)	



Heavy-duty waterproof (4 fibers).

Zipcord (2 fibers).

**To configure or purchase SEL-C808 cable assemblies,
please visit www.selcables.com.**

Build Cables Onsite

Build your cables to length onsite using the SEL-C808 Fiber Termination Tool Kit.

Terminate your SEL-C808 fiber-optic cables with best-in-class LC, SC, and ST ceramic ferrule connectors.

Connectors	
Type	Part Number
ST	240-1541
LC	240-1542
SC	240-1497

Splice Bushing	
Type	Part Number
ST	240-5012
LC	240-1810
SC	240-1811



ST Connector



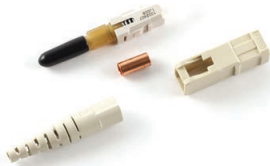
ST Splice Bushing



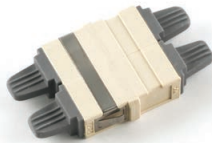
LC Connector



LC Splice Bushing (duplex)



SC Connector



SC Splice Bushing (duplex)



SEL-C808 Fiber Termination Tool Kit
Part Number: 240-1540

SEL Making Electric Power Safer,
More Reliable, and More Economical

Schweitzer Engineering Laboratories, Inc.
Tel: +1.509.332.1890 | Email: info@selinc.com | Web: www.selinc.com

© 2007–2016 by Schweitzer Engineering Laboratories, Inc.
PF00251 • 20160216

