

# SEL-734B



## Advanced Monitoring and Control System



### Monitor. Control. Report.

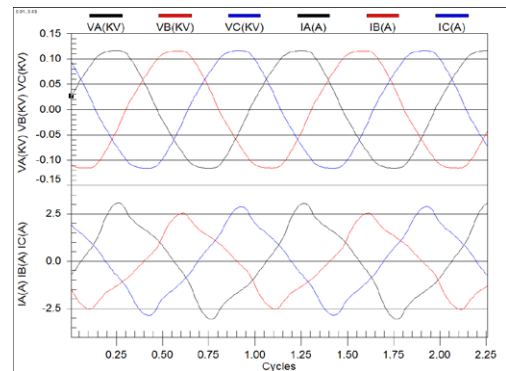
The SEL-734B includes a full set of power quality, control, and reporting functions. Combined with accurate revenue measurements, the SEL-734B is perfect for virtually any monitoring or control system.

### Local and Remote Capacitor Bank Control



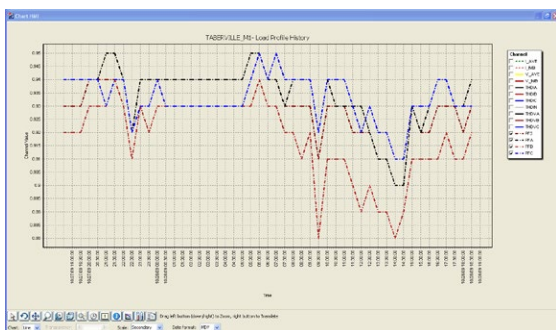
*Remote or local pushbutton control.*

### Detailed Power Quality Monitoring



*High-resolution waveform capture.*

### Disturbance Trending



*Power factor, harmonic, unbalance, and flicker trending.*

### Distribution Automation Ready



*Prewired, weather-tight enclosure option.*

**Making Electric Power Safer, More Reliable, and More Economical®**

# SEL-734B Advanced Monitoring and Control System

## Features and Benefits

### Complete Automation

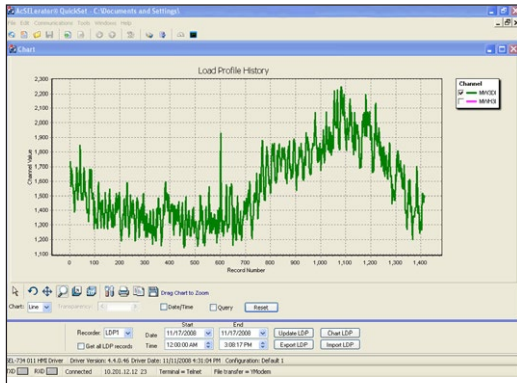
Customize alarms and automate control based on measured load information with advanced SELogic® control equations. Integrate communications processors for single-point station access.

### Capacitor Bank Control

Provide automatic control of switched capacitor banks in distribution feeder applications. The SELogic meter capabilities combine fixed pickup settings with metered quantities, such as VAR flow, voltage, time of day, and current flow on the feeder.

### Distributed Generation Control

Provide automatic start and remote control of distributed generation facilities. SELogic control equations support any logical or mathematical combination of measured quantities and set points to control a generator or load switch.



*ACSELEATOR QuickSet® LDP and .HHF export tool.*

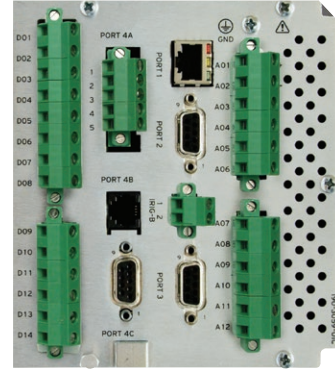
### Power Quality Monitoring

Record voltage sag/swell/interruption (VSSI) disturbances, monitor harmonics to the 50th order, capture waveforms, measure flicker, and record sequential events. Monitor, record, and control using individual harmonic values, total harmonic distortion, and K-factor with resolutions up to the 50th harmonic. Measure interharmonics from 20 to 3285 Hz in 5-Hz bins.

### Flexible Communications

Transfer real-time data over industry-standard protocols with advanced serial and Ethernet communications. Combine with an SEL high-precision IIR-B source for synchronized phasor measurements.

Ethernet  
EIA-232  
EIA-485  
Modem  
KYZ Outputs  
Analog Outputs  
Modbus®  
DNP3



*Advanced communications and integration options.*

### Low-Energy Analog (LEA) Support

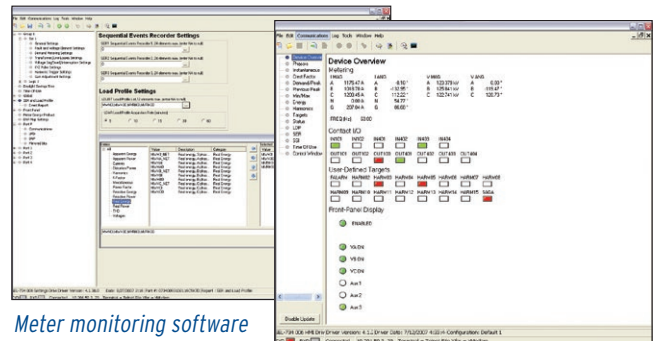
Integrate 0–10 Vac line post sensors for rapid deployment in distribution automation and monitoring applications. These inputs eliminate the need for expensive test switches and simplify installation into new locations.

### Synchronized Phasor Measurement

Combine the SEL-734B with an SEL IIR-B time source to measure the system angle in real time with a timing accuracy of  $\pm 10 \mu\text{s}$ . Measure instantaneous voltage and current phase angles in real time to improve system operation with synchrophasor information. Replace state measurement, study validation, or track system stability.

### Standard Software Tools

Easily configure, test, monitor, and retrieve data using ACSELEATOR QuickSet® SEL-5030 Software, which quickly programs, retrieves, plots, and exports to text or comma-separated value formats.



*Meter monitoring software standard with the SEL-734.*

*Simple settings software.*



Pullman, Washington USA • Tel: +1.509.332.1890 • selinc.com • info@selinc.com

© 2025 by Schweitzer Engineering Laboratories, Inc. PF00237 • 20250722

