

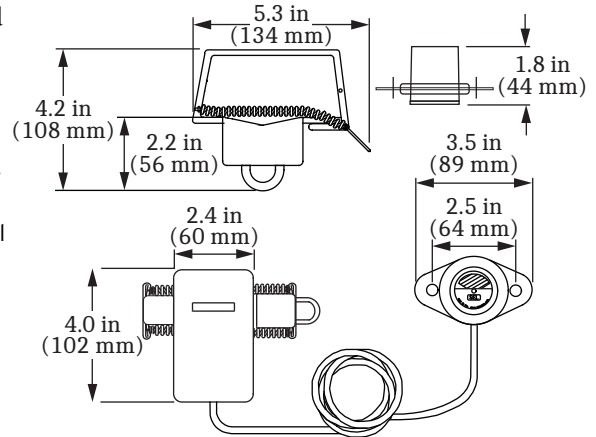


1ARUV Installation Instructions

Before installation of fault indicators and sensors, read and understand all instructions in their entirety. For assistance, please contact Customer Service at 1-847-362-8304 or by email at infolz@selinc.com.

⚠ CAUTION

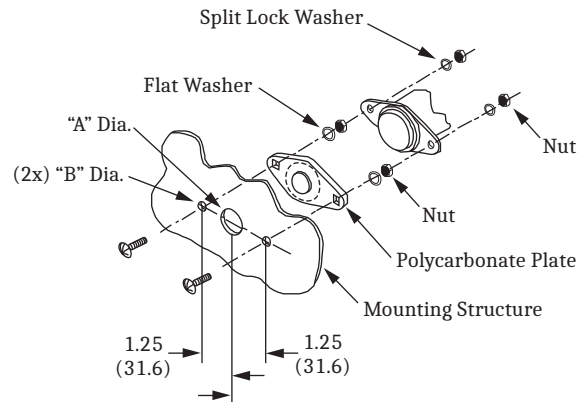
Install fault indicators and sensors in accordance with normal safe operating practices. These instructions are not intended to replace or supersede existing safety or operating requirements. Only trained qualified personnel should install or operate fault indicators and sensors.



Preferred	Acceptable			Consult Factory	Incorrect	Neutral Training for Phase Sensor
						<p>The way the neutral is trained and the correct placement of all FCI sensors are essential for proper function of the FCI. Shown are several methods of neutral training. Note the position of each FCI sensor.</p> <p>Double-back training is the preferred method.</p> <p>Three acceptable methods are shown.</p> <p>The last method prevents proper FCI function. <i>Do not use this method when applying FCI sensors.</i></p>

Install the Display

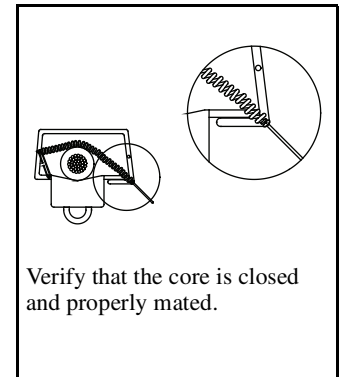
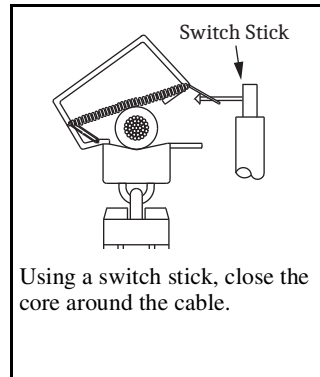
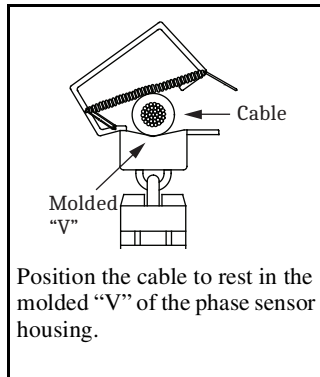
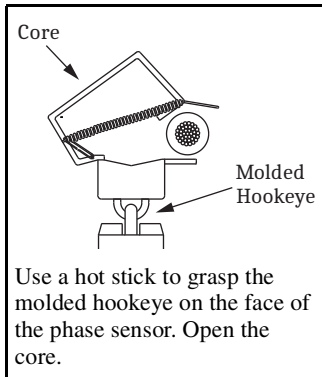
- Punch or drill two 25/64 in (10.5 mm) holes and one 1 1/16 in (27 mm) hole, as shown in the diagram, or use the template to align the holes (consult with the enclosure manufacturer for the recommended corrosion treatment of the holes).
- Remove the polycarbonate plate from the assembly kit bag and secure it to the mounting structure with carriage bolts, flat washers, and nuts, as shown in the diagram.
- Slide the stainless-steel mounting plate onto the carriage bolts.
- Position the target area of the display against the polycarbonate plate.
- Secure the polycarbonate plate with the lock washers and nuts.





1ARUV Installation Instructions

Install the Phase Sensor(s)

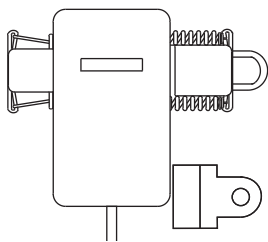


Magnetic Cable Guides hold cables and leads neatly within the enclosure.

Order Catalog Number: MCG



Field Testing



Ensure that the conductor is energized and the minimum load current has been present for at least three minutes. Hold the CRSRTT tool against the bottom right side of the housing for at least 15 seconds. Remove the tool to complete the trip or reset process.

The CRSRTT is sold separately as Catalog Number: CRSRTT.