

SEL-2902

RJ45 to DB-9 Adapter Panel



Retain existing serial cables and panel space when upgrading automation and communication devices

- Utilize existing panel space. Pair the 2U SEL-2902 and a 1U SEL-3350 Real-Time Automaton Controller (RTAC) to fill the same 3U space as the SEL automation and communications devices they replace.
- Apply in a wide variety of installations. Surface-mount and rack-mount versions are available to fit your application.
- Provide solid mounting for SEL serial transceivers when upgrading to the SEL-3300 series automation and computing platform.



Features

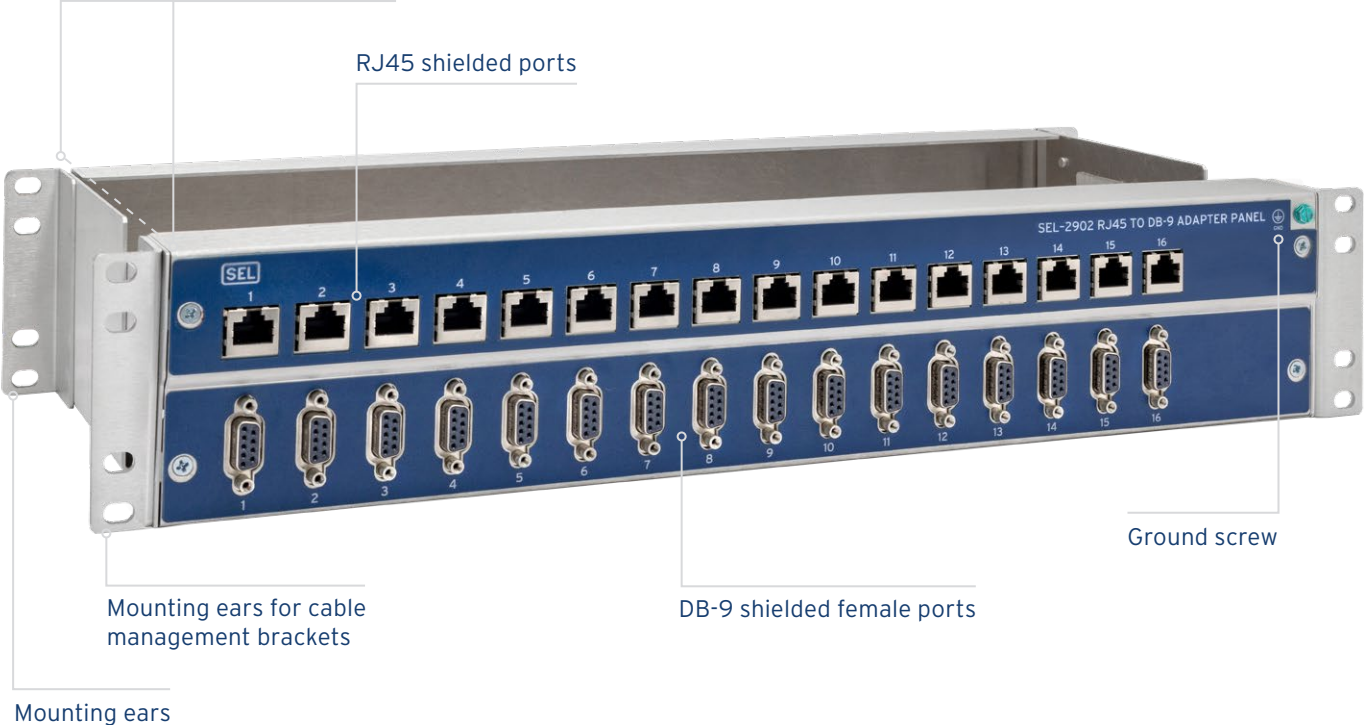
The SEL-2902 can be used in a variety of installations. It is available in two configurations:

- 19-inch 2U rack mount with depth adjustments from 7 to 11 inches
- Surface mount

Both configurations of the SEL-2902 include mounting ears that are compatible with most third-party 19-inch rack-mount cable management brackets, allowing you to keep your existing cable management solutions intact.

19-Inch 2U Rack Mount

Depth adjustment (7–11 inches)



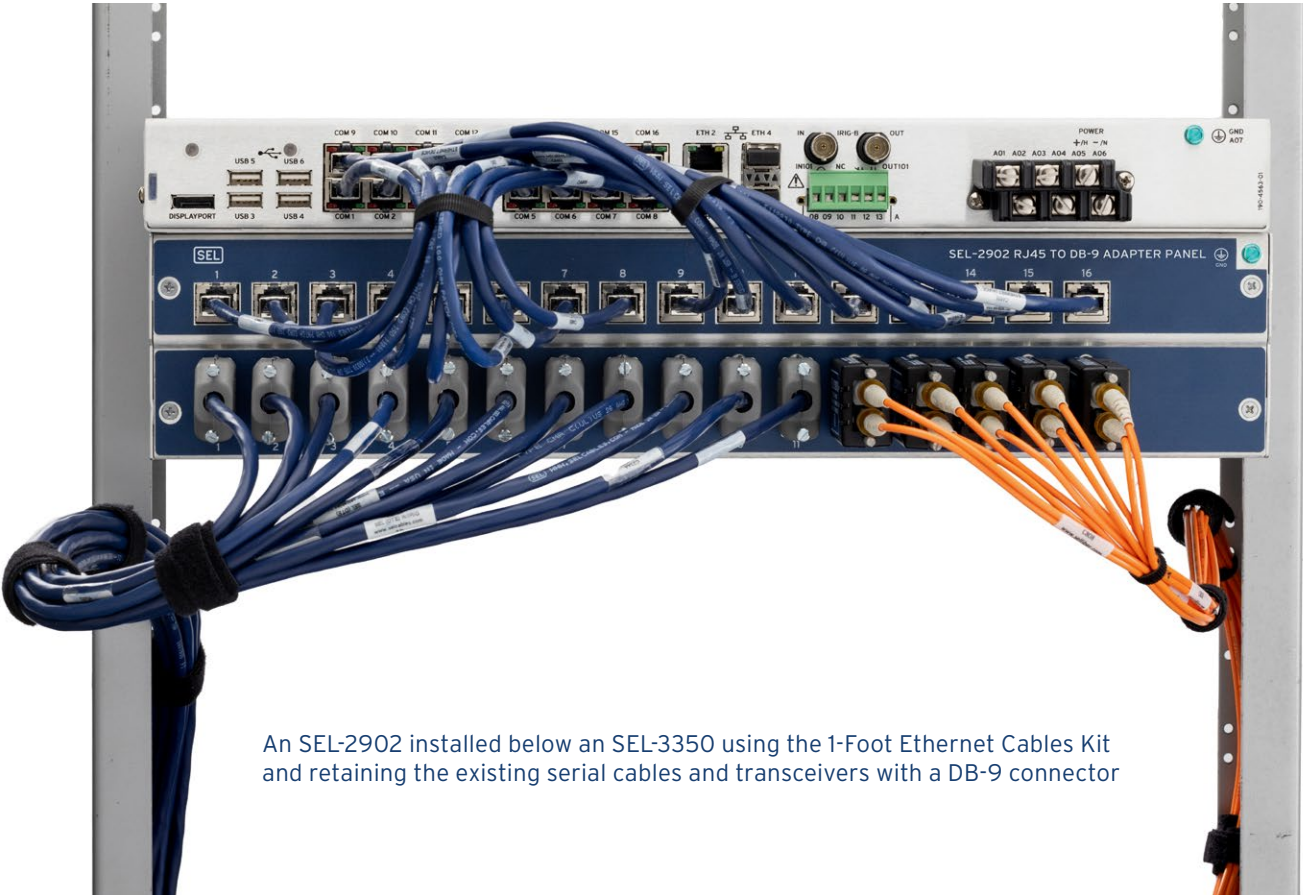
Surface Mount



Application

The SEL-2902 is specifically designed to facilitate upgrading to an SEL-3350 RTAC from the SEL-3530 RTAC or SEL-2020/2030/2032 Communications Processor, which are no longer in production.

The 2U SEL-2902 and the 1U SEL-3350 RTAC pair up to occupy the same panel space as the 3U communications processors and automation controllers they replace. This, combined with the adjustable depth of the SEL-2902, means that the existing wiring and cable management solutions can be kept intact and no panel modifications are needed.



An SEL-2902 installed below an SEL-3350 using the 1-Foot Ethernet Cables Kit and retaining the existing serial cables and transceivers with a DB-9 connector

Options and Accessories

Mounting Option	Intended Applications	Accessory Kits
19-Inch Rack Mount	Retrofit installations replacing the SEL-3530. Retrofit installations replacing the SEL-2020/2030/2032. Includes mounting ears for cable management bracket.	1 ft Ethernet Cables (Qty: 16) 2 ft Ethernet Cables (Qty: 16)
Surface Mount	New installations that use SEL serial transceivers. Installations with mounting restrictions or remote mounting requirements. Installations that require or prefer DIN-rail mounting.	DIN-Rail Mounting Kit

Specifications

Connectors	16 Female DB-9, Shielded 16 RJ45 Jack, Shielded
Dimensions	Minimum Rack-Mount Configuration: 19 in W × 7 in D × 3.47 in H (482.6 mm W × 177.8 mm D × 88.1 mm H) Maximum Rack-Mount Configuration: 19 in W × 11 in D × 3.47 in H (482.6 mm W × 279.4 mm D × 88.1 mm H) Surface-Mount Configuration: 19 in W × 1.505 in D × 3.47 in H (482.6 mm W × 38.4 mm D × 88.1 mm H)
Set Screw Torque	5–7 in-lb
Relative Humidity	5 to 95 Percent Noncondensing
Operating Temperature Range	–40° to +85°C (–40° to +185°F)

For more product information, visit selinc.com/products/2902.

SCHWEITZER ENGINEERING LABORATORIES

Making Electric Power Safer, More Reliable, and More Economical
+1.509.332.1890 | info@selinc.com | selinc.com

© 2024 by Schweitzer Engineering Laboratories, Inc.
PF00710 • 20240507

