



# SEL Transceiver Mount Assembly and Installation Instructions

## Overview

These instructions describe the steps necessary to assemble and install the SEL Transceiver Mount by using the accompanying kit. The kit allows DIN rail, surface, and screw-hole mounting options. The transceiver mount footprint dimensions and intended devices for each configuration are listed in *Table 1*.

**Table 1 Transceiver Mount Assembly Configuration Information**

Configuration	Mount Dimensions	Intended Devices
Short (S) configuration	1.525" W x 1.5" D x 3.25" H	SEL-2800, SEL-2810, SEL-2812, SEL-2814, SEL-2815, SEL-2829, SEL-2830, SEL-2831, SEL-2894, and SEL-3405 transceivers

The mounting kit includes the following items:

- SEL Transceiver Mount (two identical mounting bracket pieces pre-assembled in the S configuration)
- One #8 plastic self-tapping screw
- Two pieces of dual-sided, high-strength bonding tape
- One DIN rail clip

The mounting kit is available in three ordering options:

915900573: Mounting kit for SEL transceiver; includes mount only

915900574: Mounting kit for SEL transceiver; includes mount and SEL-C478A cable (6 ft, DB-9 female to RJ45 male)

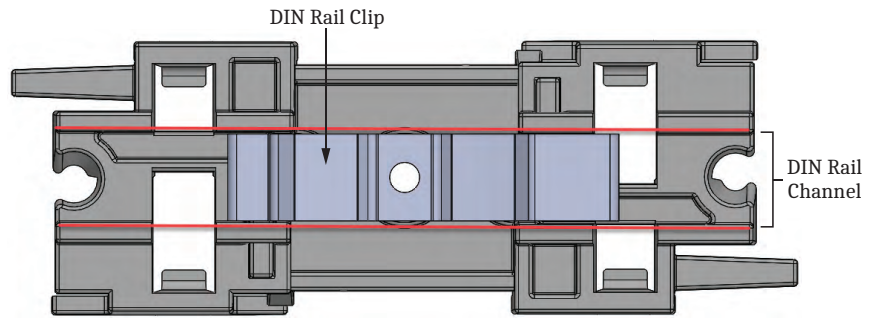
915900575: Mounting kit for SEL transceiver; includes mount and SEL-C641 cable (6 ft, DB-9 female to DB-9 male)

If you need to reconfigure the transceiver mount for use in the L configuration, follow the steps listed under *Disassemble the Transceiver Mount* on page 4 and *Assemble the Transceiver Mount* on page 4.

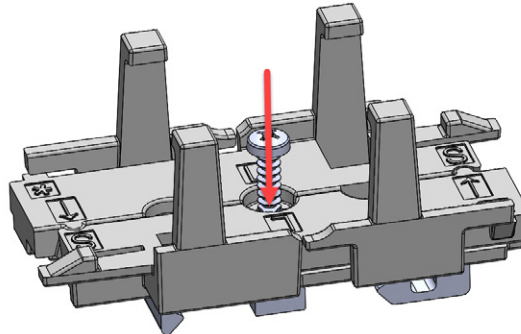
## Installation

### DIN Rail Mounting

- Step 1. Snap the DIN rail clip onto your DIN rail.
- Step 2. Align the DIN rail clip with the channel on the bottom of the assembled transceiver mount, and align the DIN rail clip hole with the central hole in the transceiver mount.



Step 3. Thread the included #8 plastic screw through the hole in the transceiver mount and into the hole in the DIN rail clip, as shown.

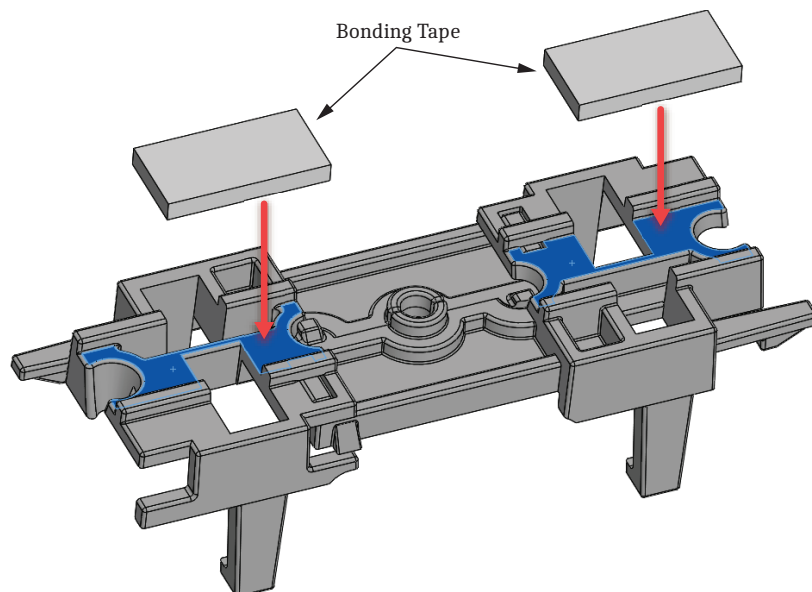


Step 4. Torque the screw to 12 in-lb after it is fully seated.

## Surface Mounting

Step 1. Remove the backing from one side of the piece of dual-sided, high-strength bonding tape.

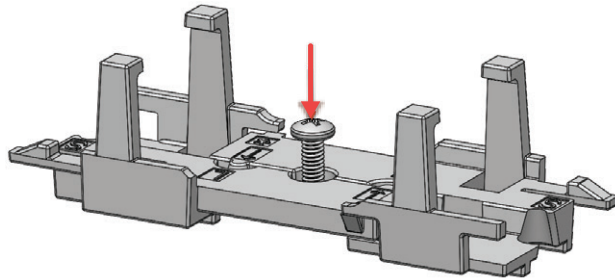
Step 2. Press the tape into one of the two channels on the bottom side of the assembled transceiver mount in one of the designated areas shown in blue.



- Step 3. Repeat this process with the second piece of tape, pressing it into the other channel.
- Step 4. Prepare the mounting surface by cleaning it with rubbing alcohol and water to ensure that any and all dust, grime, or pollutants are removed from the mounting location.
- Step 5. Remove the backing from the exposed side of the tape, and press the transceiver mount against your desired surface for 15–30 seconds.  
The tape achieves full adhesive strength after 12 hours.

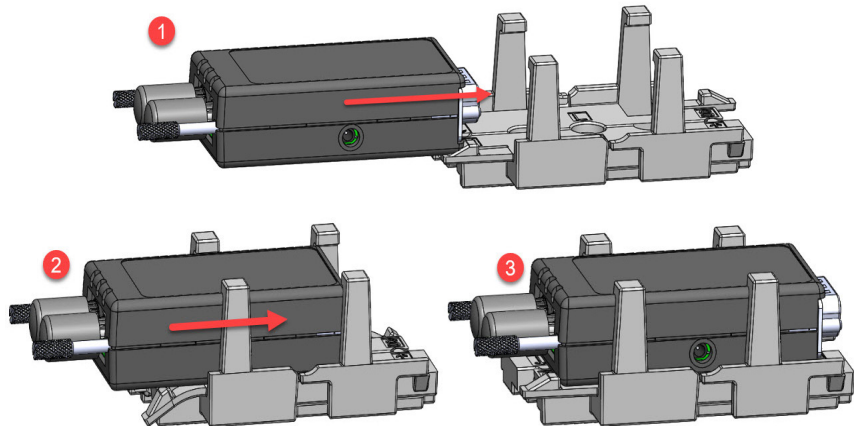
## Screw-Hole Mounting

Use any #8 pan-head machine screw equal to or longer than 3/8" to thread into any #8 threaded hole.



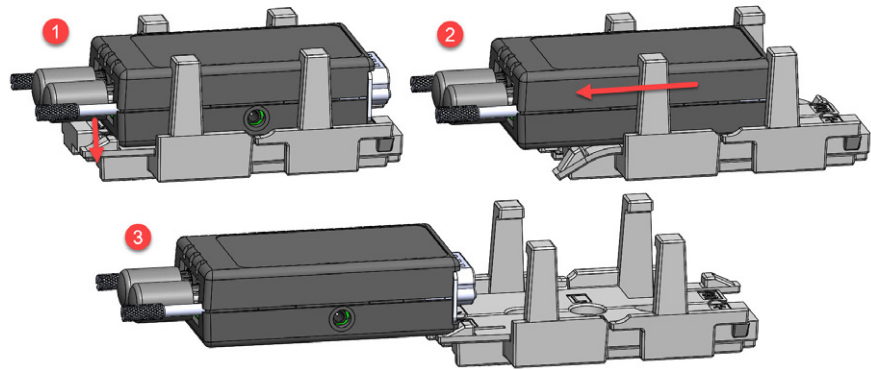
## Transceiver Installation

- Step 1. Align the SEL transceiver with either end of the transceiver mount.
- Step 2. Apply light force and slide the transceiver into the transceiver mount.
- Step 3. The transceiver will lock into place once it is fully inserted into the transceiver mount.



## Transceiver Removal

- Step 1. Apply light downward pressure to one of the transceiver mount tabs as shown.
- Step 2. Slide the transceiver in the direction of the transceiver mount tab that you pressed down.

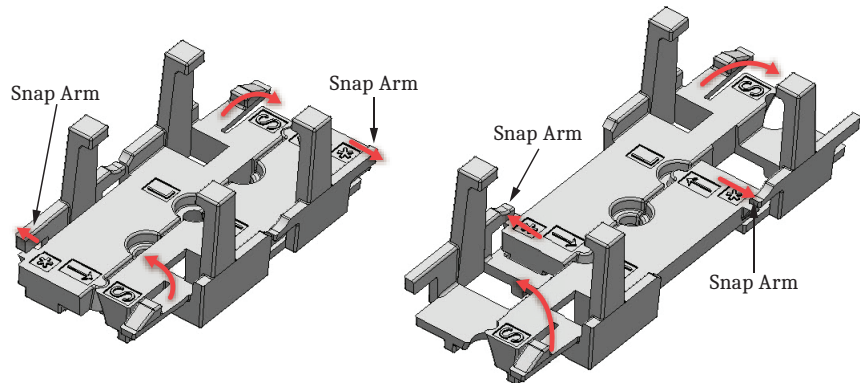


## Disassemble the Transceiver Mount

Press outward on both snap arms with your thumbs while rotating the pieces toward each other.

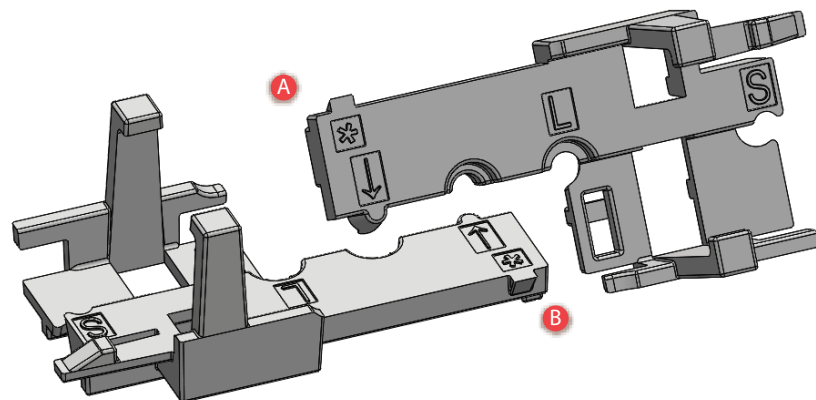
Short (S) Configuration

Long (L) Configuration



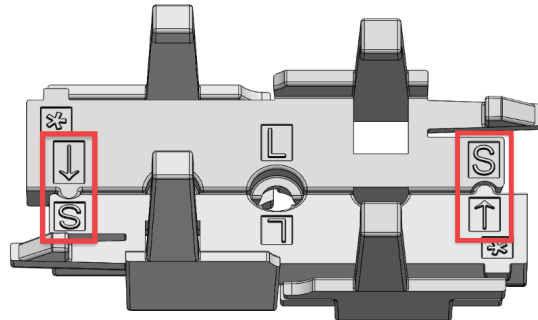
## Assemble the Transceiver Mount

Step 1. Rotate the brackets so A nests within B.

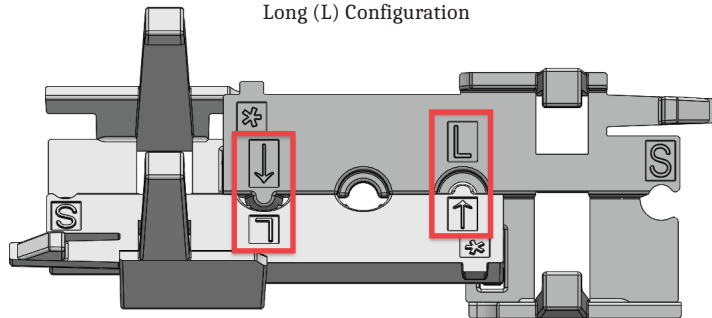


Step 2. Align the arrows on each of the parts with either the S for the short configuration or the L for the long configuration by nesting the concave and convex features.

Short (S) Configuration

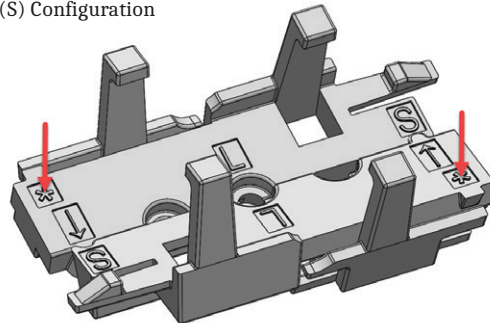


Long (L) Configuration

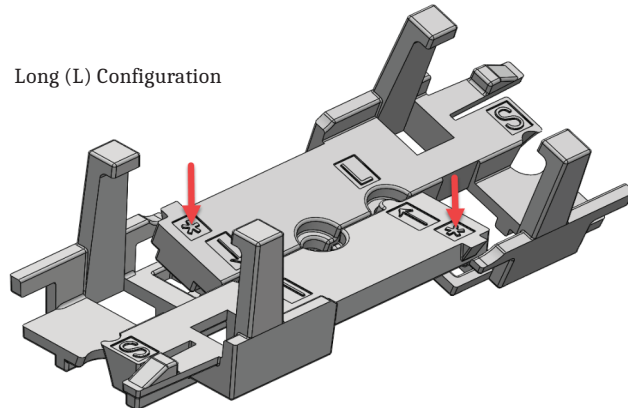


Step 3. Press down on the stars to lock the parts into place.

Short (S) Configuration



Long (L) Configuration



# Technical Support

---

We appreciate your interest in SEL products and services. If you have questions or comments, please contact us at:

Schweitzer Engineering Laboratories, Inc.  
2350 NE Hopkins Court  
Pullman, WA 99163-5603 U.S.A.  
Tel: +1.509.338.3838  
Fax: +1.509.332.7990  
Internet: [selinc.com/support](http://selinc.com/support)  
Email: [info@selinc.com](mailto:info@selinc.com)

# Notes

---

<p><b>⚠️ WARNING</b> Operator safety may be impaired if the device is used in a manner not specified by SEL.</p>	<p><b>⚠️ AVERTISSEMENT</b> La sécurité de l'opérateur peut être compromise si l'appareil est utilisé d'une façon non indiquée par SEL.</p>
<p><b>⚠️ CAUTION</b> Equipment components are sensitive to electrostatic discharge (ESD). Undetectable permanent damage can result if you do not use proper ESD procedures. Ground yourself, your work surface, and this equipment before removing any cover from this equipment. If your facility is not equipped to work with these components, contact SEL about returning this device and related SEL equipment for service.</p>	<p><b>⚠️ ATTENTION</b> Les composants de cet équipement sont sensibles aux décharges électrostatiques (DES). Des dommages permanents non-décelables peuvent résulter de l'absence de précautions contre les DES. Raccordez-vous correctement à la terre, ainsi que la surface de travail et l'appareil avant d'en retirer un panneau. Si vous n'êtes pas équipés pour travailler avec ce type de composants, contacter SEL afin de retourner l'appareil pour un service en usine.</p>

© 2021-2024 by Schweitzer Engineering Laboratories, Inc.

Content subject to change without notice.

Unless otherwise agreed in writing, all SEL product sales are subject to SEL's terms and conditions located here: <https://selinc.com/company/termsandconditions/>.

**SCHWEITZER ENGINEERING LABORATORIES, INC.**

2350 NE Hopkins Court • Pullman, WA 99163-5603 U.S.A.

Tel: +1.509.332.1890 • Fax: +1.509.332.7990

selinc.com • info@selinc.com

