



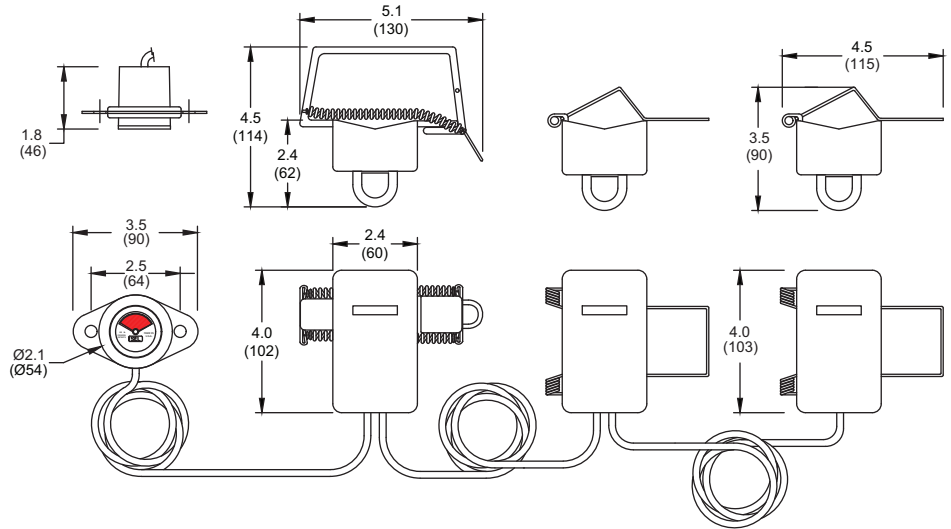
Installation Instructions for SEL-CR

3-Phase, Remote Target

Before installation of fault indicators and sensors, read and understand all instructions in their entirety. For assistance, contact Customer Service at (509) 332-1890 or by email at info@selinc.com.

CAUTION

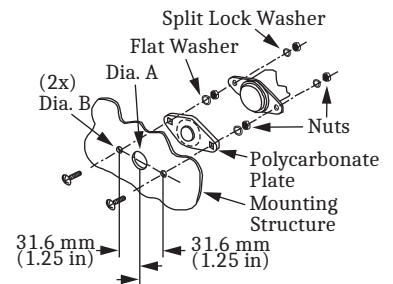
Install fault indicators and sensors in accordance with normal safe operating practices. These instructions are not intended to replace or supersede existing safety or operating requirements. Only trained qualified personnel should install or operate fault indicators and sensors.



Preferred	Acceptable	Consult Factory	Incorrect	Neutral Training for Phase Sensor	
					<p>The way the neutral is trained and the correct placement of all FCI sensors are essential for proper function of the FCI.</p> <p>Shown are several methods of neutral training. Note the position of each FCI sensor.</p> <p>Double-back training is the preferred method. Three acceptable methods are shown.</p> <p>The last method prevents proper FCI function. <i>Do not use this method</i> when applying FCI sensors.</p>

Install the Display

- Punch or drill two 10.5 mm (25/64 in) holes (Dia. B) and one 27 mm (1 1/16 in) hole (Dia. A), as shown in the diagram, or use the template to align the holes (consult with the enclosure manufacturer for the recommended corrosion treatment of the holes).
- Remove the polycarbonate plate from the assembly kit bag and secure it to the mounting structure with carriage bolts, flat washers, and nuts, as shown in the diagram.
- Slide the stainless-steel mounting plate onto the carriage bolts.
- Position the target area of the display against the polycarbonate plate.
- Secure the polycarbonate plate with the lock washers and nuts.

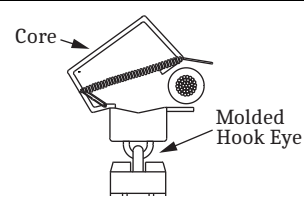




Installation Instructions for SEL-CR

3-Phase, Remote Target

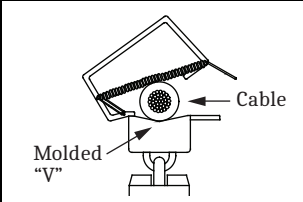
Install the Phase Sensor(s)



Core

Molded Hook Eye

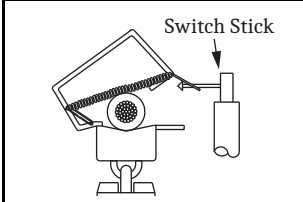
Use a hot stick to grasp the molded hook eye on the face of the phase sensor. Open the core.



Molded "V"

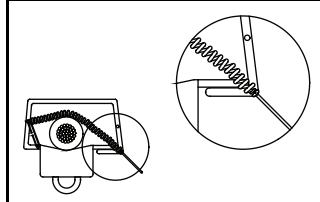
Cable

Position the cable to rest in the molded "V" of the phase sensor housing.



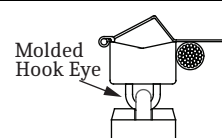
Switch Stick

Using a switch stick, close the core around the cable.



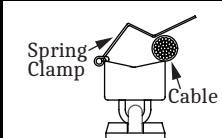
Verify that the core is closed and properly mated.

Install the Phase Sensor(s)



Molded Hook Eye

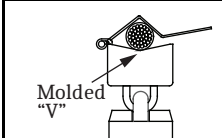
Using a hot stick, grasp the molded hook eye on the face of the phase sensor.



Spring Clamp

Cable

Position the indicator with the end of the spring clamp behind the cable. Push the sensor onto the cable.



Molded "V"

Position the cable so that it rests in the molded "V" of the phase sensor.

Magnetic Cable Guides hold cables and leads neatly within the enclosure.

Catalog Number: MCG

