

# DON'T GET HOOKED

BEWARE OF PHISHING SCAMS



**SEL** SCHWEITZER ENGINEERING LABORATORIES

For information about SEL cybersecurity solutions or copies of this poster, visit [selinc.com/cybersecurity](https://selinc.com/cybersecurity).  
© 2019 by Schweitzer Engineering Laboratories, Inc. • LM00382-01 • 20190415

# PRACTICE SECURITY IN DEPTH



The best cybersecurity has many layers.

**SEL** SCHWEITZER ENGINEERING LABORATORIES

For information about SEL cybersecurity solutions or copies of this poster, visit [selinc.com/cybersecurity](https://selinc.com/cybersecurity).  
© 2019 by Schweitzer Engineering Laboratories, Inc. • LM00388-01 • 20190219

# PRACTICE SECURITY IN DEPTH

The best cybersecurity has many layers.



**SEL** SCHWEITZER ENGINEERING LABORATORIES

For information about SEL cybersecurity solutions or copies of this poster, visit [selinc.com/cybersecurity](https://selinc.com/cybersecurity).  
© 2019 by Schweitzer Engineering Laboratories, Inc. • LM00378-01 • 20190215

# ATTACKERS ARE LOOKING

Never expose critical infrastructure to the internet.



**SEL** SCHWEITZER ENGINEERING LABORATORIES

For information about SEL cybersecurity solutions or copies of this poster, visit [selinc.com/cybersecurity](https://selinc.com/cybersecurity).  
© 2019 by Schweitzer Engineering Laboratories, Inc. • LM00400-01 • 20190219

# BRIDGING NETWORKS INVITES DANGER



Isolate critical infrastructure environments.

**SEL** SCHWEITZER ENGINEERING LABORATORIES

For information about SEL cybersecurity solutions or copies of this poster, visit [selinc.com/cybersecurity](http://selinc.com/cybersecurity).  
© 2019 by Schweitzer Engineering Laboratories, Inc. • LM00380-01 • 20190411

# BE SUSPICIOUS OF EVERYTHING

(in a nonparanoid fashion)

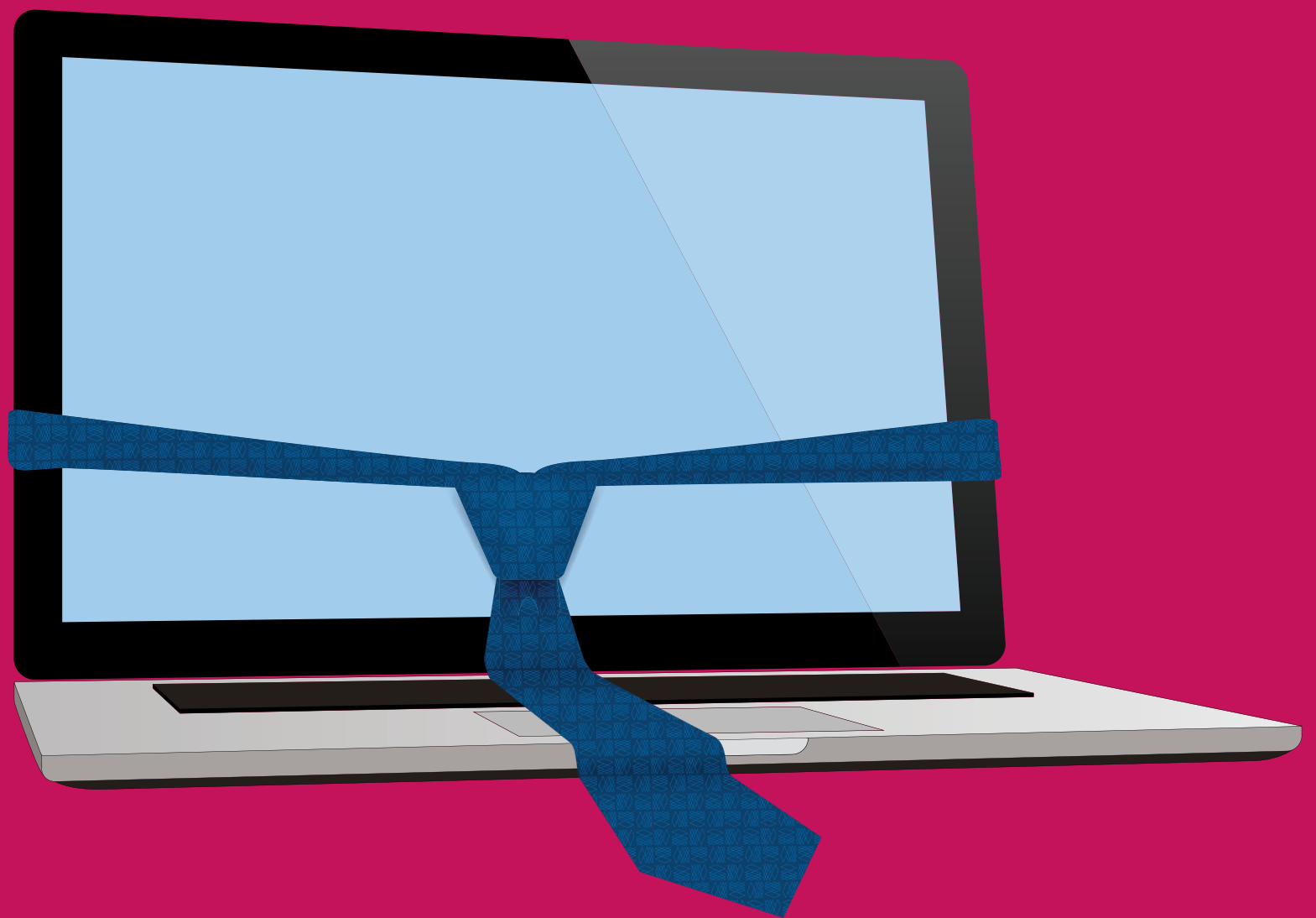


Cyber criminals make the Internet a dangerous place. Be street-smart. Keep a critical eye out, and avoid unsafe activities.

**SEL** SCHWEITZER ENGINEERING LABORATORIES

For information about SEL cybersecurity solutions or copies of this poster, visit [selinc.com/cybersecurity](https://selinc.com/cybersecurity).  
© 2018 by Schweitzer Engineering Laboratories, Inc. • LM00341-01 • 20180223

# YOUR COMPUTER IS A BUSINESS TOOL



The more casual your web use,  
the greater your risk of a  
malware infection.

**SEL** SCHWEITZER ENGINEERING LABORATORIES

For information about SEL cybersecurity solutions or copies of this poster, visit [selinc.com/cybersecurity](http://selinc.com/cybersecurity).  
© 2018 by Schweitzer Engineering Laboratories, Inc. • LM00408-01 • 20190515

# DON'T USE DEFAULT PASSWORDS

INSTEAD, SHOW SOME CREATIVITY!

Sherlock0HMS+watTs0n

**Make your password as unique as you are.  
A phrase is a great way to create a strong  
password that's easy to remember and hard  
to crack.**

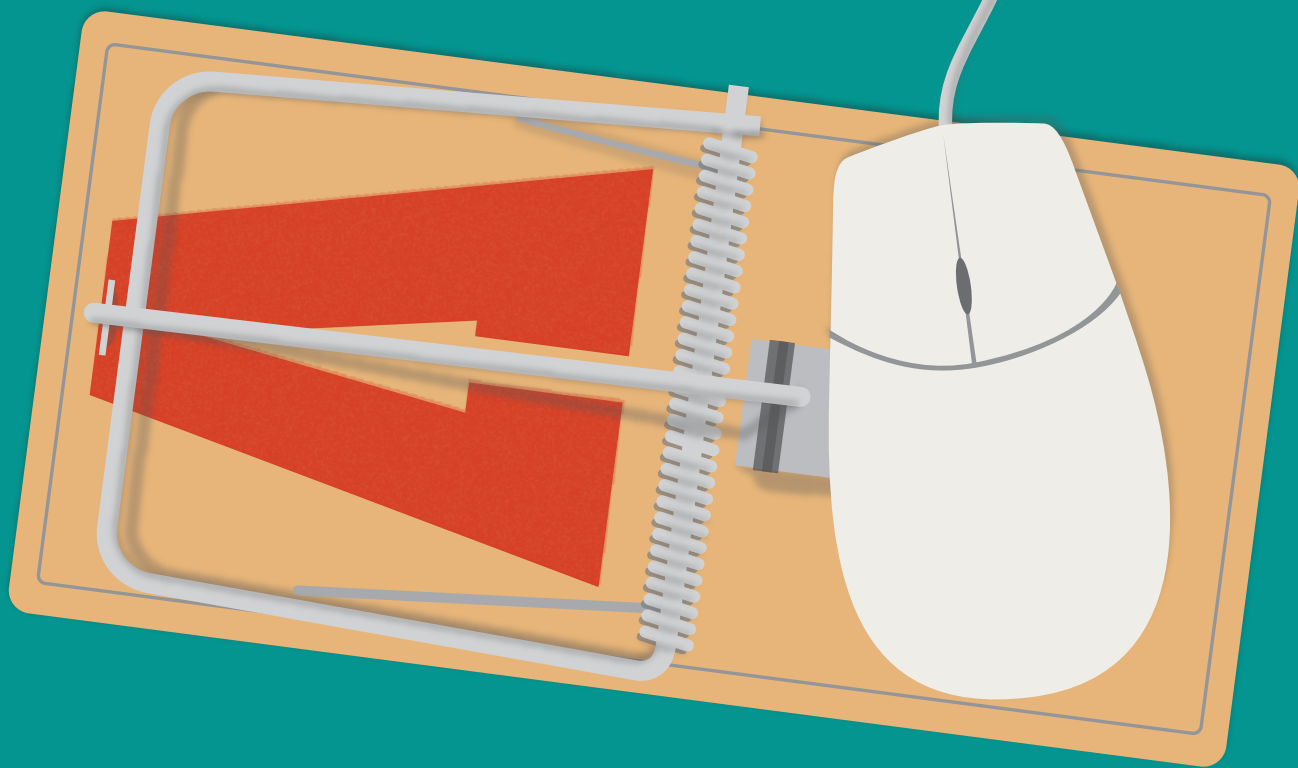
**SEL** SCHWEITZER ENGINEERING LABORATORIES

For information about SEL cybersecurity solutions or copies of this poster, visit [selinc.com/cybersecurity](https://selinc.com/cybersecurity).  
© 2019 by Schweitzer Engineering Laboratories, Inc. • LM00407-01 • 20190514



# CONFIRM THE SOURCE

Never click on unexpected  
email links or attachments.



**SEL** SCHWEITZER ENGINEERING LABORATORIES

For information about SEL cybersecurity solutions or copies of this poster, visit [selinc.com/cybersecurity](https://selinc.com/cybersecurity).  
© 2019 by Schweitzer Engineering Laboratories, Inc. • LM00381-01 • 20190411

# DO YOU KNOW WHO YOUR DEVICES ARE TALKING TO?



Protect your critical infrastructure  
with secure communications.

**SEL** SCHWEITZER ENGINEERING LABORATORIES

For information about SEL cybersecurity solutions or copies of this poster, visit [selinc.com/cybersecurity](http://selinc.com/cybersecurity).  
© 2019 by Schweitzer Engineering Laboratories, Inc. • LM00374-01 • 20190411



# ARE DIGITAL DOORS LEFT OPEN?

Securing the substation means more than locking the gate.  
Make sure you close your digital doors.

**SEL** SCHWEITZER ENGINEERING LABORATORIES

For information about SEL cybersecurity solutions or copies of this poster, visit [selinc.com/cybersecurity](https://selinc.com/cybersecurity).  
© 2019 by Schweitzer Engineering Laboratories, Inc. • LM00402-01 • 20190219

# YOUR DOG'S NAME IS NOT A PASSWORD

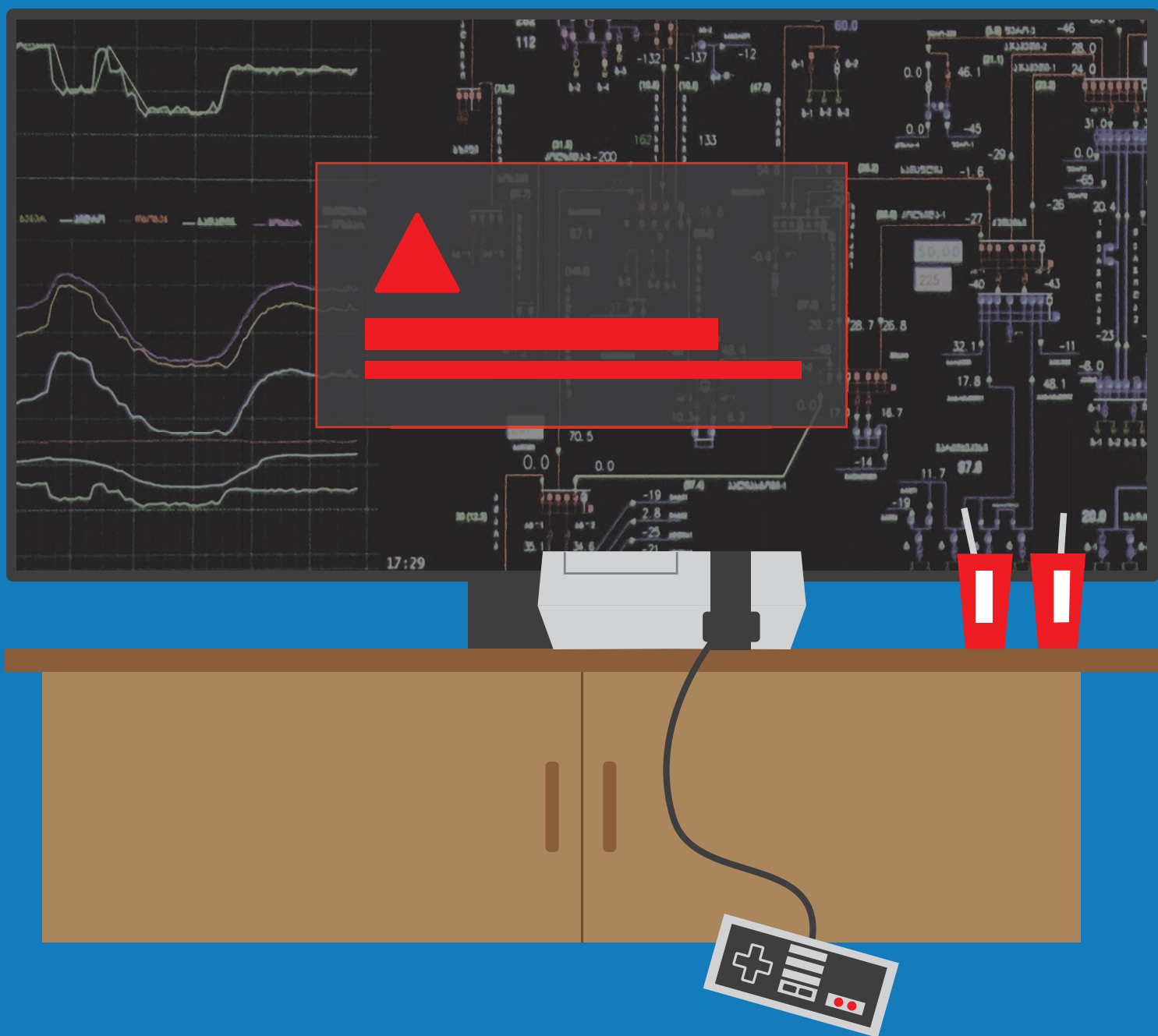


Choose a password that is easy  
to remember, yet hard to guess.

**SEL** SCHWEITZER ENGINEERING LABORATORIES

For information about SEL cybersecurity solutions or copies of this poster, visit [selinc.com/cybersecurity](https://selinc.com/cybersecurity).  
© 2019 by Schweitzer Engineering Laboratories, Inc. • LM00384-01 • 20190411

# DON'T OPERATE THE POWER SYSTEM FROM YOUR HOME



Critical jobs require a secure environment.  
Keep the Internet out to keep your system  
from being compromised.

**SEL** SCHWEITZER ENGINEERING LABORATORIES

For information about SEL cybersecurity solutions or copies of this poster, visit [selinc.com/cybersecurity](http://selinc.com/cybersecurity).  
© 2019 by Schweitzer Engineering Laboratories, Inc. • LM00376-01 • 20190604

**ELECTRICITY  
IS POWERFUL,  
INVISIBLE, AND  
DANGEROUS**

**SO IS  
INFORMATION**

Be careful with both.

**SEL** SCHWEITZER ENGINEERING LABORATORIES

For information about SEL cybersecurity solutions or copies of this poster, visit [selinc.com/cybersecurity](https://selinc.com/cybersecurity).  
© 2019 by Schweitzer Engineering Laboratories, Inc. • LM00392-01 • 20190513

A black computer monitor is centered on a solid red background. The monitor's screen displays the text "YOUR FILES HAVE BEEN ENCRYPTED!" in large, bold, yellow capital letters. The monitor has a thin black bezel and a small green light on the bottom right corner.

# **YOUR FILES HAVE BEEN ENCRYPTED!**

**...But not by you.**

**Ransomware is on the rise.**

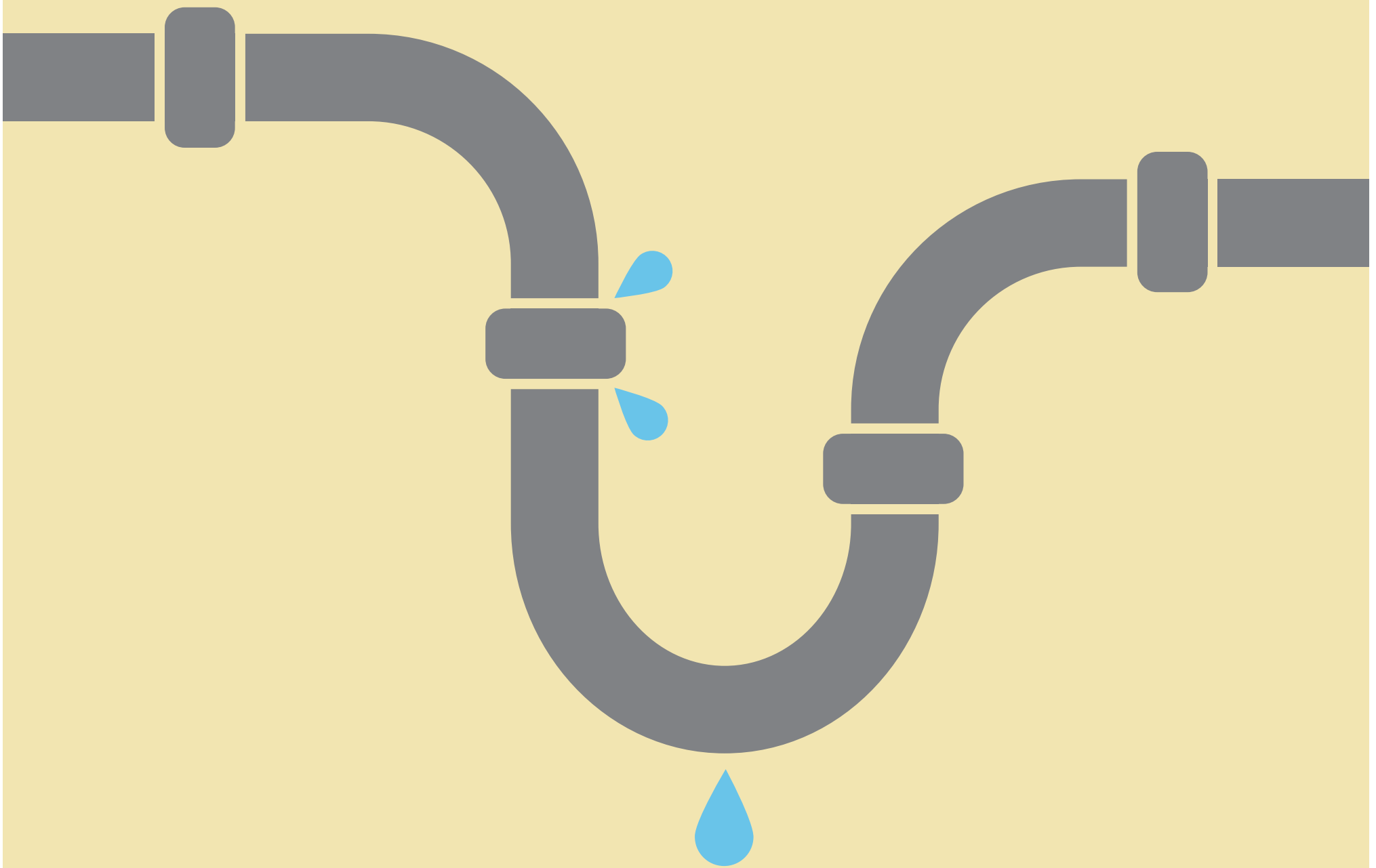
**Don't be a victim of extortion.**

- Back up data regularly.
- Keep systems up to date.
- Be wary of phishing emails.
- Avoid risky online behavior.

**SEL SCHWEITZER ENGINEERING LABORATORIES**

For information about SEL cybersecurity solutions or copies of this poster, visit [selinc.com/cybersecurity](https://selinc.com/cybersecurity).  
© 2018 by Schweitzer Engineering Laboratories, Inc. • LM00338-01 • 20180223

# KNOW HOW TO HANDLE A LEAK



The time to make a plan is not during or after a crisis. Learn to identify a security incident and how to respond.

**SEL** SCHWEITZER ENGINEERING LABORATORIES

For information about SEL cybersecurity solutions or copies of this poster, visit [selinc.com/cybersecurity](https://selinc.com/cybersecurity).  
© 2018 by Schweitzer Engineering Laboratories, Inc. • LM00337-01 • 20180223



**KEEP  
THE  
INTERNET  
OUTSIDE  
THE  
FENCE**

**SEL** SCHWEITZER ENGINEERING LABORATORIES

For information about SEL cybersecurity solutions or copies of this poster, visit [selinc.com/cybersecurity](https://selinc.com/cybersecurity).  
© 2019 by Schweitzer Engineering Laboratories, Inc. • LM00386-01 • 20190417

# KEEP YOUR TOOLS CLEAN



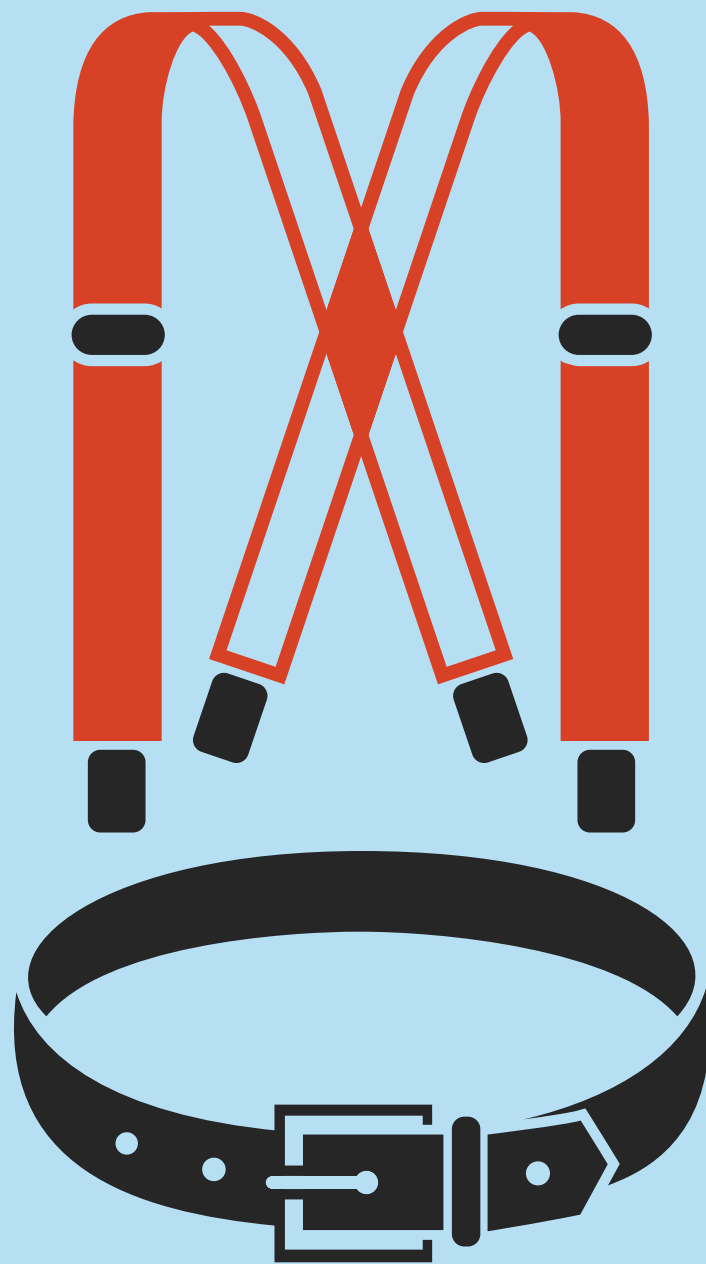
**Don't let infections spread. Always scan for malware before using USB sticks.**

**SEL** SCHWEITZER ENGINEERING LABORATORIES

For information about SEL cybersecurity solutions or copies of this poster, visit [selinc.com/cybersecurity](https://selinc.com/cybersecurity).  
© 2019 by Schweitzer Engineering Laboratories, Inc. • LM00375-01 • 20190415

# MULTIFACTOR AUTHENTICATION

It's like wearing a belt and suspenders.



A strong password is a good start, but it could use an extra layer of protection. Enable multifactor authentication whenever possible to validate that the person signing into your account is really you.

**SEL** SCHWEITZER ENGINEERING LABORATORIES

For information about SEL cybersecurity solutions or copies of this poster, visit [selinc.com/cybersecurity](https://selinc.com/cybersecurity).  
© 2018 by Schweitzer Engineering Laboratories, Inc. • LM00335-01 • 20180223

[REDACTED]

[REDACTED] **ONLY** [REDACTED]

[REDACTED] **SHARE**

**INFORMATION** [REDACTED]

[REDACTED]

[REDACTED] **WITH THOSE**

[REDACTED]

[REDACTED] **WHO** [REDACTED]

[REDACTED]

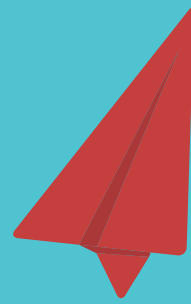
**NEED** [REDACTED] **TO**

[REDACTED] **KNOW** [REDACTED]

[REDACTED]

# PAY ATTENTION TO STRANGE BEHAVIOR

Whether by a computer or a person, odd behavior can be a warning sign that something is wrong. Report concerns without delay!



**SEL** SCHWEITZER ENGINEERING LABORATORIES

For information about SEL cybersecurity solutions or copies of this poster, visit [selinc.com/cybersecurity](https://selinc.com/cybersecurity).  
© 2018 by Schweitzer Engineering Laboratories, Inc. • LM00343-01 • 20180223

# PATCH YOUR SYSTEMS REGULARLY



Many breaches are based on common exploits. Be aware of the risks, and apply well-tested patches or mitigate vulnerabilities with other security controls.

**SEL** SCHWEITZER ENGINEERING LABORATORIES

For information about SEL cybersecurity solutions or copies of this poster, visit [selinc.com/cybersecurity](https://selinc.com/cybersecurity).  
© 2018 by Schweitzer Engineering Laboratories, Inc. • LM00339-01 • 20180223

# PICK TWO AND KEEP ACCESS JUST TO YOU



Something you know.



Something you are.



Something you have.



Someplace you are.

Enable multifactor authentication whenever possible to validate that the person signing in to your account is really you.

# PATROL YOUR SECURITY PERIMETERS

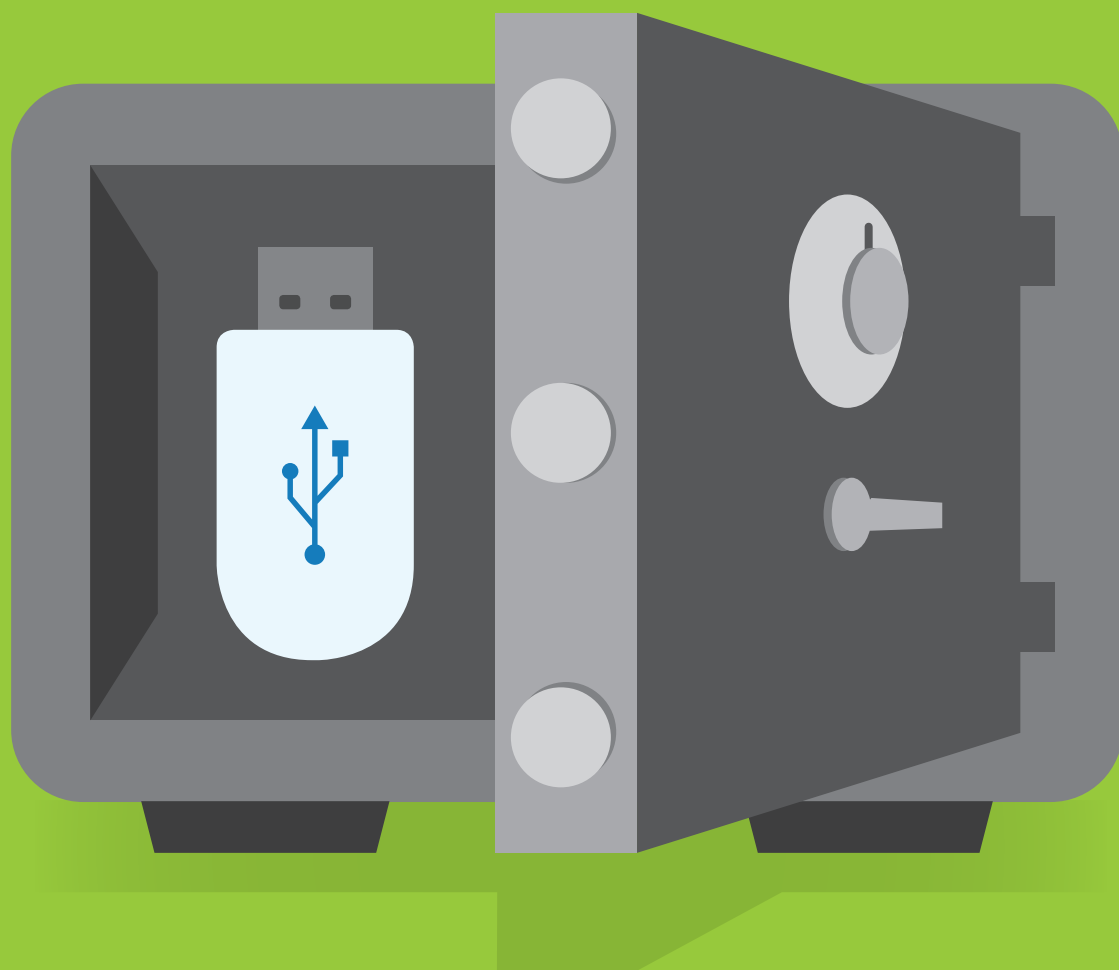
Promptly report problems or concerns.

 SCHWEITZER ENGINEERING LABORATORIES

For information about SEL cybersecurity solutions or copies of this poster, visit [selinc.com/cybersecurity](https://selinc.com/cybersecurity).  
© 2019 by Schweitzer Engineering Laboratories, Inc. • LM00404-01 • 20190513



# USE SECURE BUSINESS PRACTICES



**Only use USB drives you know are clean.  
Establish protocols to keep them isolated  
and free from malware.**

**SEL** SCHWEITZER ENGINEERING LABORATORIES

For information about SEL cybersecurity solutions or copies of this poster, visit [selinc.com/cybersecurity](https://selinc.com/cybersecurity).  
© 2019 by Schweitzer Engineering Laboratories, Inc. • LM00377-01 • 20190415


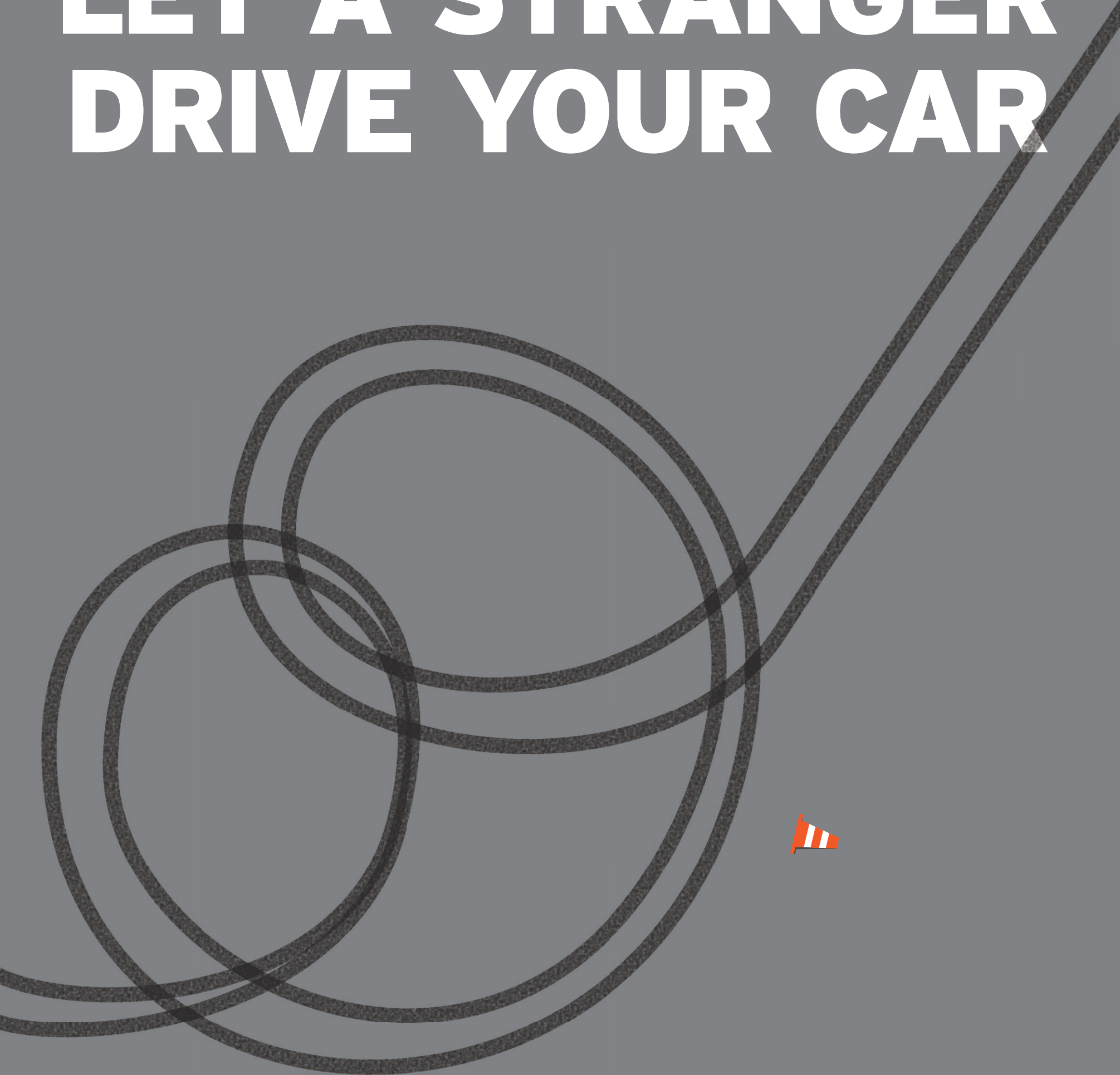
# SERIOUSLY

Cyber attacks are real, and critical infrastructure is a major target. Be aware and prepared.

 SCHWEITZER ENGINEERING LABORATORIES

For information about SEL cybersecurity solutions or copies of this poster, visit [selinc.com/cybersecurity](https://selinc.com/cybersecurity).  
© 2019 by Schweitzer Engineering Laboratories, Inc. • LM00391-01 • 20190219

# YOU WOULDN'T LET A STRANGER DRIVE YOUR CAR



Don't let strangers into the network.  
Use whitelisting to protect our systems.

 SCHWEITZER ENGINEERING LABORATORIES

For information about SEL cybersecurity solutions or copies of this poster, visit [selinc.com/cybersecurity](https://selinc.com/cybersecurity).  
© 2019 by Schweitzer Engineering Laboratories, Inc. • LM00405-01 • 20190514

# **SUMTHINGS PHISHY**

**Phishing emails often contain grammatical errors or misspellings. Use caution before clicking on potentially dangerous links or attachments.**

# TAKE A CLOSER LOOK



Gibe me you money.  
I'll give you money make rich.  
Totally legit.

Unexpected content, fake links, and odd or unknown sender addresses are indicators that an email might be phishing.

**SEL** SCHWEITZER ENGINEERING LABORATORIES

For information about SEL cybersecurity solutions or copies of this poster, visit [selinc.com/cybersecurity](https://selinc.com/cybersecurity).  
© 2019 by Schweitzer Engineering Laboratories, Inc. • LM00399-01 • 20190219

# TECHNOLOGY HAS CHANGED



Cyber attacks are more advanced than ever.  
Practice security in depth.

**SEL** SCHWEITZER ENGINEERING LABORATORIES

For information about SEL cybersecurity solutions or copies of this poster, visit [selinc.com/cybersecurity](https://selinc.com/cybersecurity).  
© 2019 by Schweitzer Engineering Laboratories, Inc. • LM00406-01 • 20190529

# THAT'S STRANGE



Unexpected links, attachments, or requests  
are indicators that an email might be phishing.

**SEL** SCHWEITZER ENGINEERING LABORATORIES

For information about SEL cybersecurity solutions or copies of this poster, visit [selinc.com/cybersecurity](https://selinc.com/cybersecurity).  
© 2019 by Schweitzer Engineering Laboratories, Inc. • LM00403-01 • 20190219

# THIEVES and ENEMIES LOVE DARKNESS



Keep them out of our power networks  
to keep the lights on.

**SEL** SCHWEITZER ENGINEERING LABORATORIES

For information about SEL cybersecurity solutions or copies of this poster, visit [www.selinc.com/cybersecurity](http://www.selinc.com/cybersecurity).  
© 2019 by Schweitzer Engineering Laboratories, Inc. • LM00398-01 • 20190606



# UNEXPECTED EMAIL?

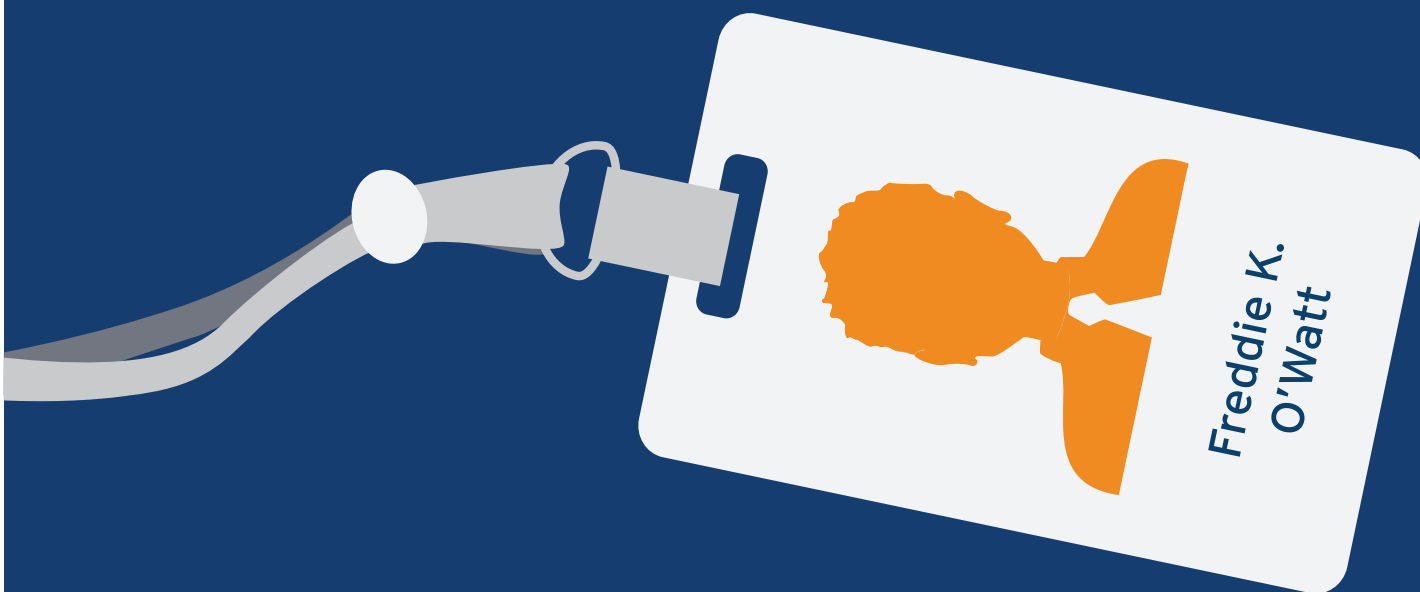


Proceed with caution—it could be malicious!  
Never open email links or unexpected  
attachments. Check with Security to verify  
the safety of suspect emails.

**SEL** SCHWEITZER ENGINEERING LABORATORIES

For information about SEL cybersecurity solutions or copies of this poster, visit [selinc.com/cybersecurity](https://selinc.com/cybersecurity).  
© 2018 by Schweitzer Engineering Laboratories, Inc. • LM00351-01 • 20180223

# TREAT ALL KEYS WITH CARE



Login	<input type="text" value="Freddie_K_OWatt"/>
Password	<input type="password" value="*****A"/>

# I DON'T SHARE MY TOOTHBRUSH OR MY PASSWORD



Don't share your passwords,  
and do change them regularly.  
Treat your toothbrush the same.

**SEL** SCHWEITZER ENGINEERING LABORATORIES

For information about SEL cybersecurity solutions or copies of this poster, visit [selinc.com/cybersecurity](https://selinc.com/cybersecurity).  
© 2019 by Schweitzer Engineering Laboratories, Inc. • LM00385-01 • 20190411

# TROUBLE IN DISGUISE



**Only share information if you can confirm  
that the requester is who they claim to be  
and that they have a need to know.**

**SEL SCHWEITZER ENGINEERING LABORATORIES**

For information about SEL cybersecurity solutions or copies of this poster, visit [selinc.com/cybersecurity](https://selinc.com/cybersecurity).  
© 2019 by Schweitzer Engineering Laboratories, Inc. • LM00395-01 • 20190513

# DON'T GET CAUGHT



Phishing scams lure you to click on dangerous links. Don't become a cyber criminal's trophy catch.

**SEL** SCHWEITZER ENGINEERING LABORATORIES

For information about SEL cybersecurity solutions or copies of this poster, visit [selinc.com/cybersecurity](https://selinc.com/cybersecurity).  
© 2019 by Schweitzer Engineering Laboratories, Inc. • LM00401-01 • 20190513

# UNEXPECTED EMAIL?

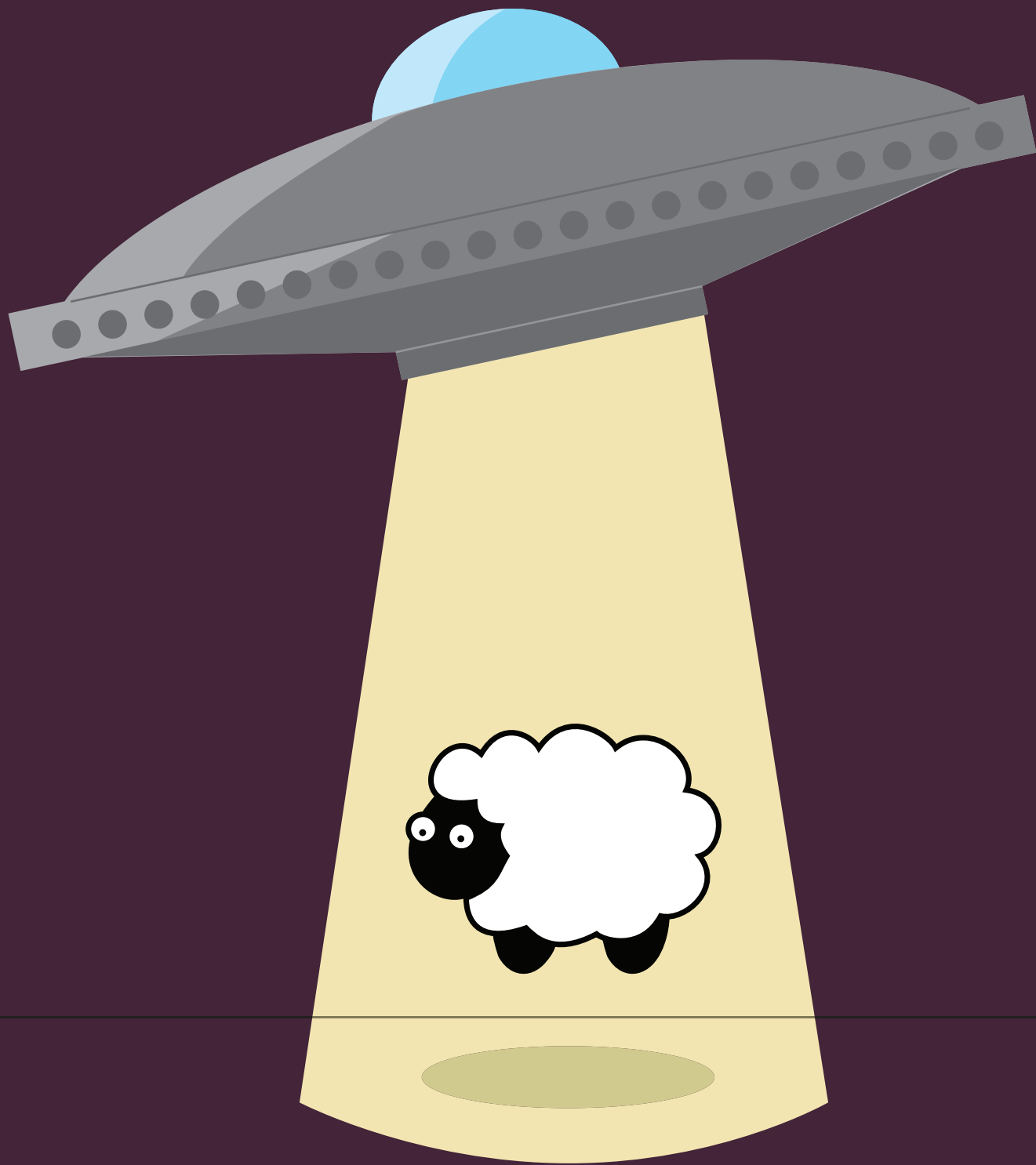


Proceed with caution—it could be malicious!  
Never open email links or unexpected  
attachments. Check with IT to verify the  
safety of suspect emails.

**SEL** SCHWEITZER ENGINEERING LABORATORIES

For information about SEL cybersecurity solutions or copies of this poster, visit [selinc.com/cybersecurity](https://selinc.com/cybersecurity).  
© 2018 by Schweitzer Engineering Laboratories, Inc. • LM00350-01 • 20180223

# SEE SOMETHING UNUSUAL?



If you notice something that  
just doesn't look right, report it immediately.

**SEL** SCHWEITZER ENGINEERING LABORATORIES

For information about SEL cybersecurity solutions or copies of this poster, visit [selinc.com/cybersecurity](https://selinc.com/cybersecurity).  
© 2019 by Schweitzer Engineering Laboratories, Inc. • LM00373-01 • 20190404

**uS3\_S7R\*nG  
P@S5\|/OrDs**

The longer the password, the stronger it is.  
A unique phrase is a great way to create a  
strong password that's easy to remember.





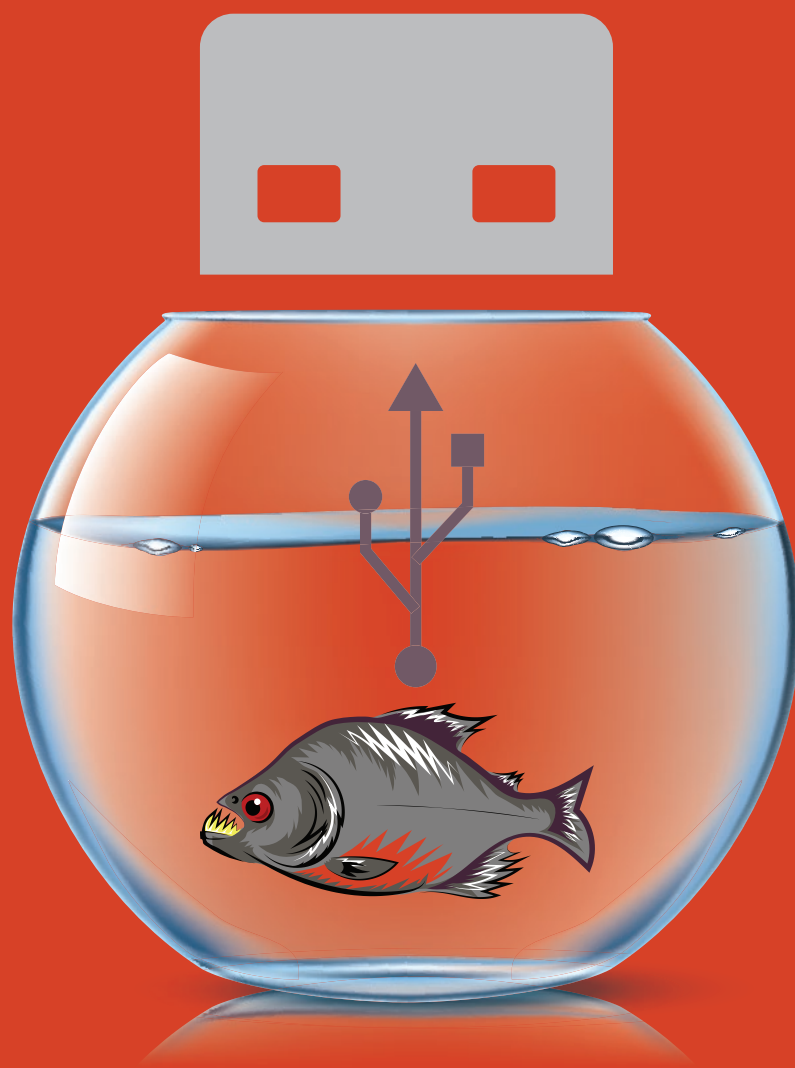
# WHAT ARE YOU LOOKING AT?

The more casual your web use,  
the greater your risk of a malware infection.

**SEL** SCHWEITZER ENGINEERING LABORATORIES

For information about SEL cybersecurity solutions or copies of this poster, visit [selinc.com/cybersecurity](https://selinc.com/cybersecurity).  
© 2019 by Schweitzer Engineering Laboratories, Inc. • LM00397-01 • 20190219

# WHILE SMALL IN SIZE, USB DEVICES CARRY A HUGE RISK



USB malware is more advanced than ever.  
Don't get bitten—keep USB devices off of  
our systems.

**SEL** SCHWEITZER ENGINEERING LABORATORIES

For information about SEL cybersecurity solutions or copies of this poster, visit [selinc.com/cybersecurity](https://selinc.com/cybersecurity).  
© 2018 by Schweitzer Engineering Laboratories, Inc. • LM00347-01 • 20180223

# WHILE SMALL IN SIZE, USB DEVICES CARRY A HUGE RISK



USB malware is more advanced than ever. Don't get bitten—only use approved, trusted, and clean devices.



**SEL** SCHWEITZER ENGINEERING LABORATORIES

For information about SEL cybersecurity solutions or copies of this poster, visit [selinc.com/cybersecurity](https://selinc.com/cybersecurity).  
© 2018 by Schweitzer Engineering Laboratories, Inc. • LM00348-01 • 20180223

# YOU WOULDN'T SAIL WITHOUT A LIFE JACKET



Just like a life jacket, security controls keep you safe. Tampering with or disabling them can put you at unnecessary risk.

**SEL** SCHWEITZER ENGINEERING LABORATORIES

For information about SEL cybersecurity solutions or copies of this poster, visit [selinc.com/cybersecurity](https://selinc.com/cybersecurity).  
© 2018 by Schweitzer Engineering Laboratories, Inc. • LM00344-01 • 20180223

# YOU

ARE THE FIRST AND  
THE LAST DEFENSE



Security tools can't replace your role in a robust security strategy. Take a stand to know your security policies and apply them.

**SEL** SCHWEITZER ENGINEERING LABORATORIES

For information about SEL cybersecurity solutions or copies of this poster, visit [selinc.com/cybersecurity](https://selinc.com/cybersecurity).  
© 2018 by Schweitzer Engineering Laboratories, Inc. • LM00340-01 • 20180223

# YOU WOULDN'T DRIVE WITHOUT A SEAT BELT



Just like a seat belt, security controls  
keep you safe. Reduce your risk by  
keeping them in place.

**SEL** SCHWEITZER ENGINEERING LABORATORIES

For information about SEL cybersecurity solutions or copies of this poster, visit [selinc.com/cybersecurity](https://selinc.com/cybersecurity).  
© 2018 by Schweitzer Engineering Laboratories, Inc. • LM00345-01 • 20180223

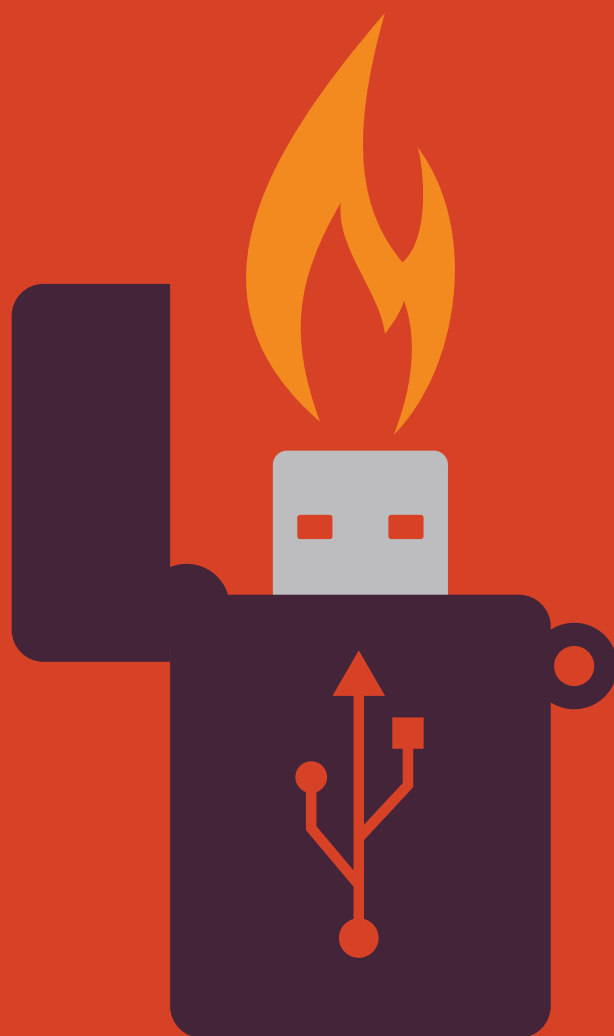
**WHO?**  
**WHAT?**  
**WHEN?**

Confirm who you're talking to, and only share  
information they need to know.

 **SCHWEITZER ENGINEERING LABORATORIES**

For information about SEL cybersecurity solutions or copies of this poster, visit [selinc.com/cybersecurity](https://selinc.com/cybersecurity).  
© 2019 by Schweitzer Engineering Laboratories, Inc. • LM00393-01 • 20190219

# WHILE SMALL IN SIZE, USB DEVICES CARRY A HUGE RISK



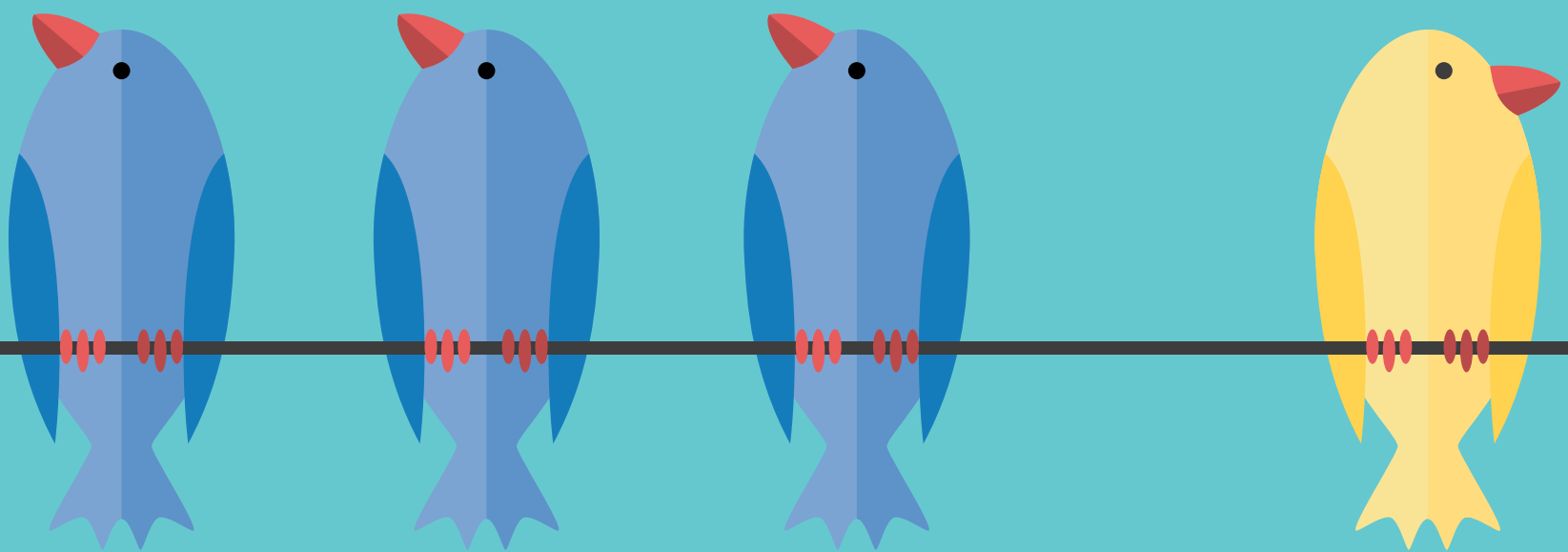
USB malware is more advanced than ever. Don't get burned—only use approved, trusted, and clean devices.

**SEL** SCHWEITZER ENGINEERING LABORATORIES

For information about SEL cybersecurity solutions or copies of this poster, visit [selinc.com/cybersecurity](https://selinc.com/cybersecurity).  
© 2018 by Schweitzer Engineering Laboratories, Inc. • LM00349-01 • 20180223



# USE UNIQUE PASSWORDS



Choose a password that is easy to remember, yet hard to guess. A phrase is a great way to create a strong password that's easy to remember.