



SEL-2411P Pump Automation Controller

Rugged Controller for Automating Water/Wastewater Stations



High Reliability, Low Price

- Ten-Year, Worldwide Warranty
- -40° to +85°C Operating Temperature
- Ruggedized to Meet Industrial and Utility Standards
- Class I, Division 2 Hazardous Location Approval

Automated Station Control and Monitoring

- Pump alternation supports as many as four pumps and four stages
- Pump-operation history including run times and start counts
- Pump-voltage monitoring

Flexible Input, Output, and Logic Choices

- Powerful Logic, Math, and Timer Functions
- Fast 4 ms Logic Loop Time
- Dual Ethernet and EIA-232 Communications
- Modbus RTU, Modbus TCP, DNP3, DNP3 LAN/WAN, MIRRORING BITS®, and SEL ASCII and Binary Communications

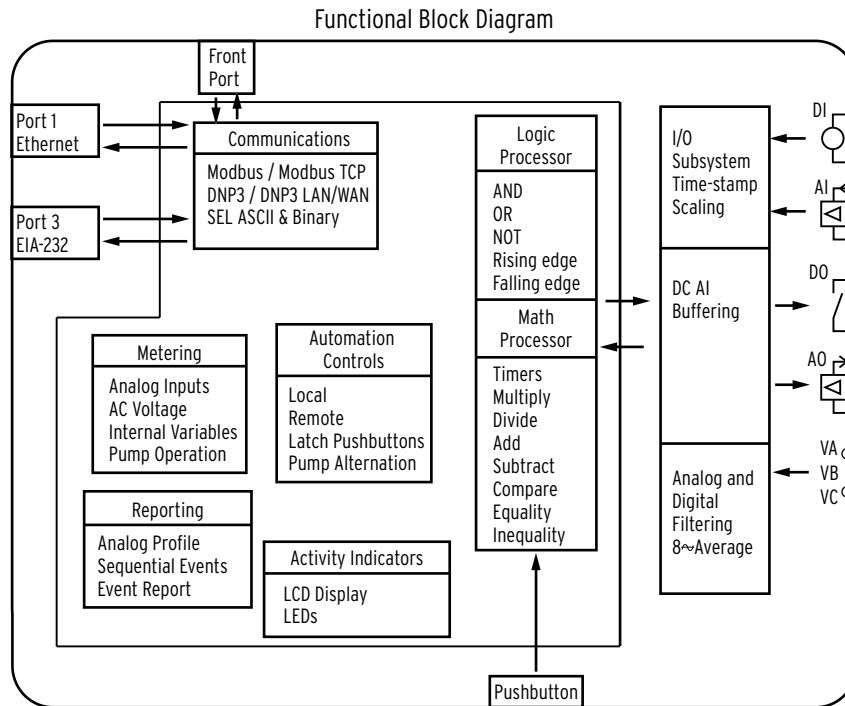
Simple Commissioning Tools

- Station settings provide fast and easy configuration
- Front-Panel Configuration and Measurement Display and Access
- Local LCD Display of Settings, Calculated Values, and Statuses
- Programmable Front-Panel Indication and Control
- Simple Programming With ACSELERATOR QuickSet® SEL-5030 Software

Product Summary

The SEL-2411P Pump Automation Controller automates continuous and discrete processes. A standalone SEL-2411P is a simple solution to monitor and control pump-up and pump-down applications such as lift stations (wastewater) and wells or reservoirs (pump-up). The SEL-2411P is capable of controlling constant

speed/variable speed pumps, alternating pumps, pump delays, and high/low level alarms. Station settings offer selectable pump-alternation schemes for single, duplex, and triplex pumping applications. Measure fluid level by using float switches or an analog fluid-level sensor (or both).



Automation and Control Features

Standard Features

- Chassis
- Front panel
- LCD display
 - Four programmable pushbuttons with LEDs
 - Seven programmable LEDs
 - Operator control interface
 - EIA-232 port
- Main board
 - EIA-232 port
 - Dual 10/100BASE-T
- Power supply
- 2 DI, 3 DO on power-supply board
- QuickSet software
- Instruction manual, printed or on CD-ROM
- Protocols
 - DNP3
 - Modbus RTU
 - SEL MIRRORED BITS
 - SEL ASCII and Compressed ASCII
 - SEL Fast Protocols
- Float-Level-Sensing Card (14 digital inputs)
 - Float-switch inputs
 - Auto/hand pump control
 - Intrusion detection input
 - Power-supply alarm input
- Pump Control and Status Card (4 DI/4 DO)
 - Start/stop pump outputs
 - Pump-running feedback inputs

Additional Ordering Options

The following options can be ordered for any SEL-2411P model (see the SEL-2411P Model Option Table for details):

| | |
|-------------------------|---|
| Digital Inputs | 14 DI (PN 1476) |
| Analog I/O | 8 AI (PN9762), 4 AI/4 AO (PN 9763) |
| Pump-Voltage Monitoring | 3 AVI (PN 9771) |
| Environment | Conformal coating for chemically harsh and high-moisture environments |

Flexible Control Logic and Integration Features

The SEL-2411P is equipped with two independently operated serial ports: one EIA-232 port on the front and one EIA-232 port on the rear. The device does not require special communications software. Use any system that emulates a standard terminal system for engineering access to the device. Establish communication by connecting computers, modems, protocol converters, printers, an SEL Communications Processor, SCADA serial port, and an RTU for local or remote communication. Apply an SEL communications

processor as the hub of a star network, with point-to-point fiber or copper connection between the hub and the SEL-2411P. Included communications protocols are listed.

Standard Protocols

- DNP3
- Modbus
- SEL ASCII
- SEL Compressed ASCII
- SEL Fast Protocols
- SEL MIRRORING BITS

Simplify Your Setup and Commissioning

The SEL-2411P front panel simplifies commissioning and troubleshooting with the following features:

- Configure pump control and alternation by using as few as three station settings
- View field data and calculated values
- Diagnose data flow problems in seconds instead of hours
- Dramatically reduce troubleshooting time
- Eliminate the need for out-of-service time

Front-Panel Visualization and Control

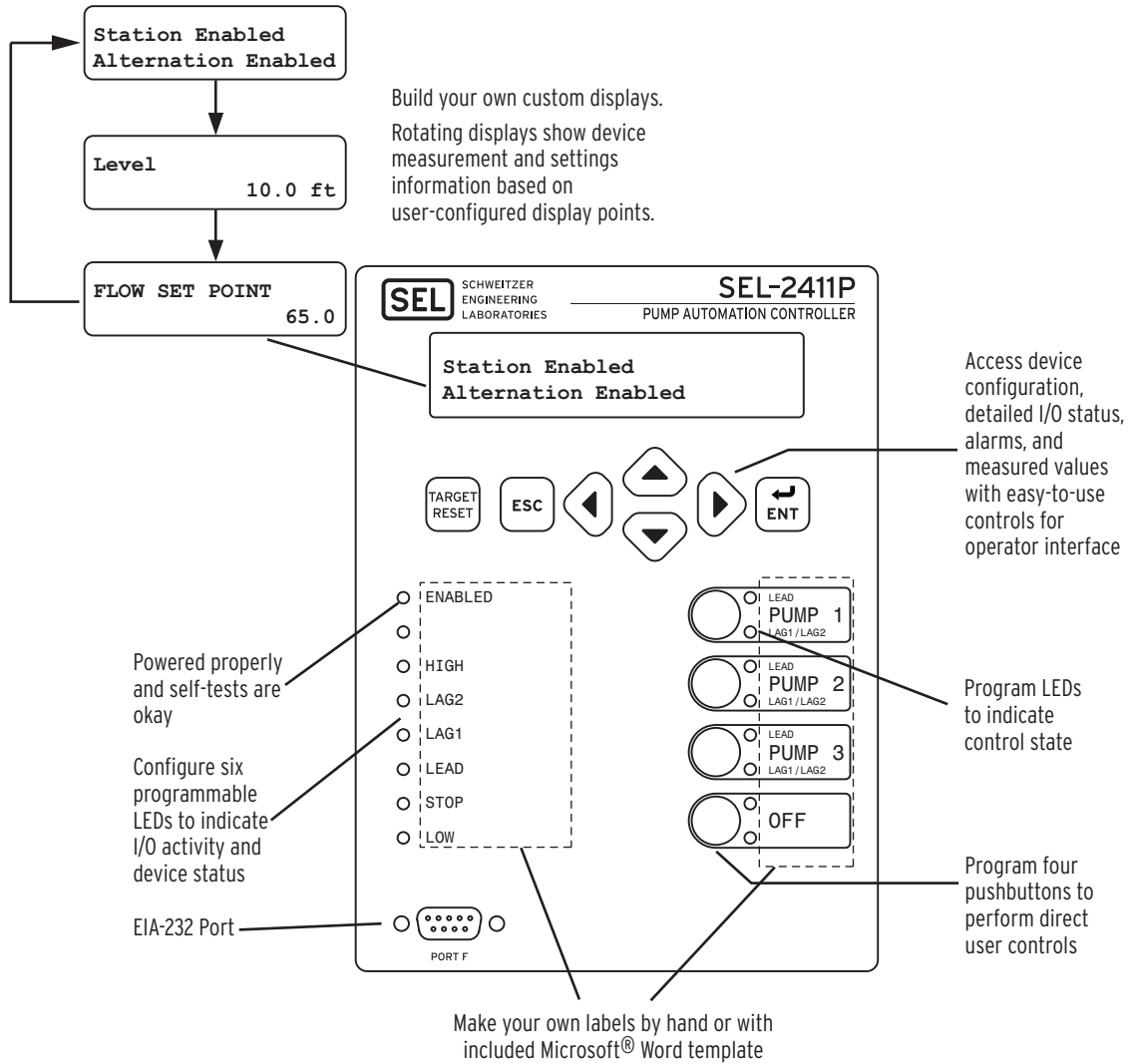
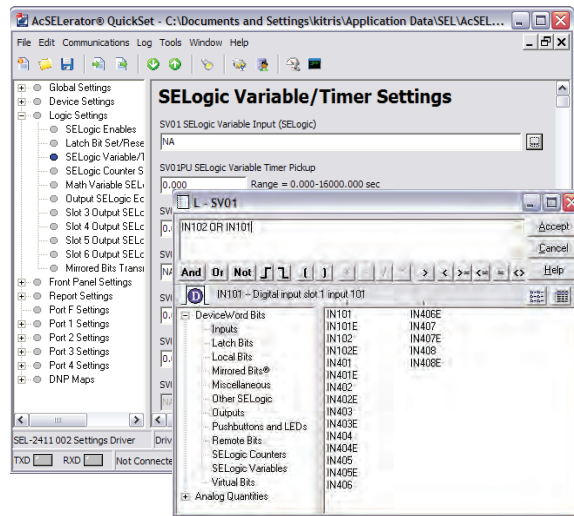


Figure 1 Simplify Your Commissioning

Configuration Software

The included QuickSet software program simplifies device configuration in addition to providing commissioning and analysis support for the SEL-2411P.

- Access settings creation help online.
- Organize settings with the device database manager.
- Load and retrieve settings by using a simple PC communications link.
- Customize logic to optimize lift-station operation and control.



Settings-create SELogic control equations with a drag and drop editor and/or text editor

Monitoring and Metering

The SEL-2411P provides extensive metering capabilities. See *Specifications* on page 8 for metering accuracies. As shown in *Table 1*, metering includes pump-operation status, voltage-based metering and analog input, math variable and remote analog metering. Pump-operation status includes two-hour, one-day, two-day, and total pump start-count and run-time quantities. Fundamental, maximum, and minimum metering includes phase voltages, line-to-line voltages, sequence voltages, and voltage frequency.

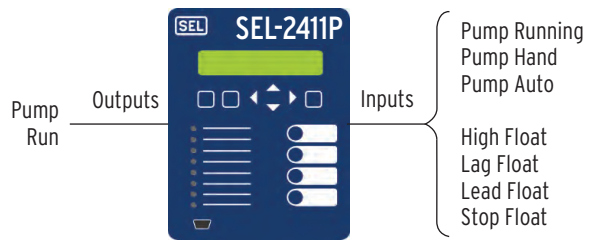
Table 1 Metering Types

| Standard | |
|-----------------------|--|
| Pump Operation Status | Run-time, start-count, time since last start, and stage cycle run-time |
| Fundamental | VA, VB, VC |
| Maximum and Minimum | Frequency, Voltages (VA, VB, VC) |
| Analog Input | AI601–AI608 |
| Math Variable | MV01–MV64 |
| Remote Analog | RA001–RA128 |

Application

Pump Controller

Regulate the level in tanks for lift stations and reservoirs for single, duplex, or triplex pumping applications. Alternate pumps to balance starts, maximize longevity, reduce wear on equipment, and make maintenance more predictable. Use both analog level sensors and float switches to provide redundancy in fluid-level sensing and increase reliability for station control.



Front- and Rear-Panel Diagrams

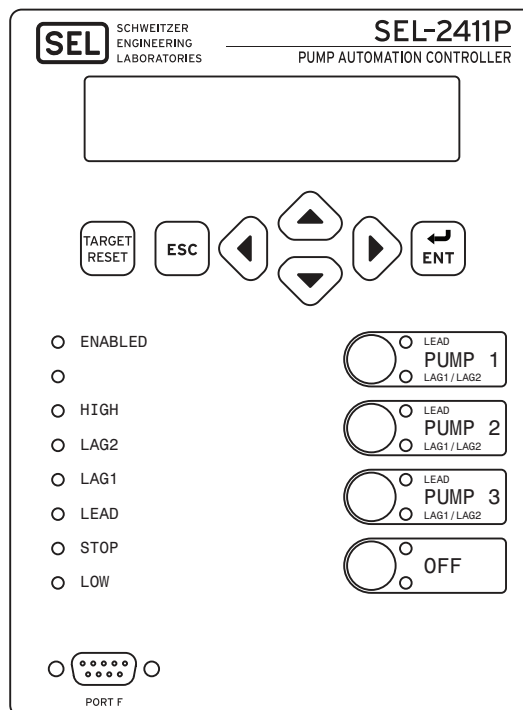


Figure 2 Front Panel With Default Configurable Labels

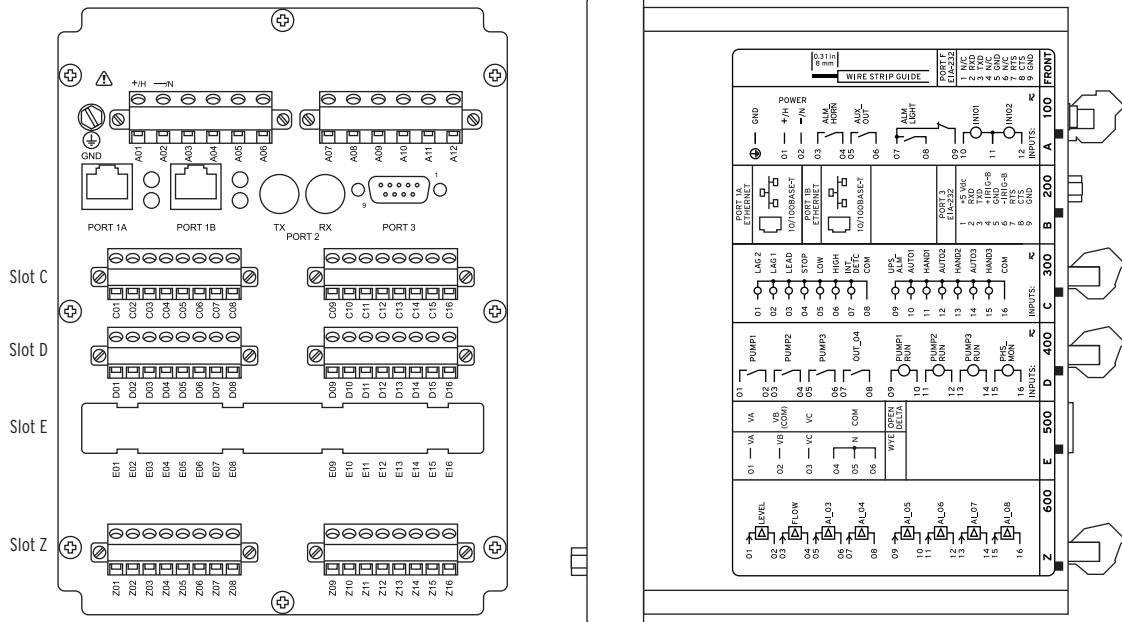


Figure 3 Rear-Panel Connections and Labels

Dimensions

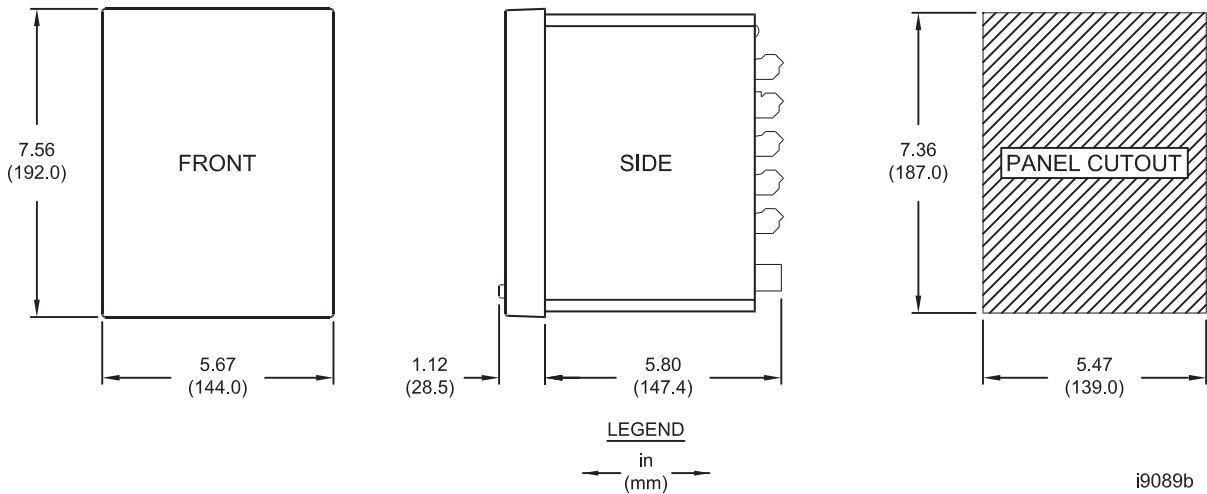


Figure 4 Pump Automation Controller Vertical Panel Mount

Specifications

Compliance

Designed and manufactured under an ISO 9001 certified quality management system.

47 CFR 15B, Class A

Note: This equipment has been tested and found to comply with the limits for a Class A digital device, pursuant to part 15 of the FCC Rules. These limits are designed to provide reasonable protection against harmful interference when the equipment is operated in a commercial environment. This equipment generates, uses, and can radiate radio frequency energy and, if not installed and used in accordance with the instruction manual, may cause harmful interference to radio communications. Operation of this equipment in a residential area is likely to cause harmful interference in which case the user will be required to correct the interference at his own expense.

UL Listed to U.S. and Canadian safety standards (File E220228; N7GQ2, N7GQ8)

UL Listed to U.S. and Canadian safety standards (File E220228; NRAQ, NRAQ7)

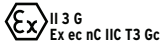
UL Listed for Hazardous Locations to Canadian and U.S. Standards (File 475839; NRAQ, NRAQ7)

CE Mark

UKCA Mark

Hazardous Locations

UL Listed for Hazardous Locations to Canadian and U.S. standards
EU



EN 60079-0:2018

EN 60079-7:2015/A1:2018

EN 60079:15:2019

Note: Where so marked, ATEX and UL Hazardous Locations Certification tests are applicable to rated supply specifications only and do not apply to the absolute operating ranges, continuous thermal, or short circuit duration specifications.

General

Operating Temperature Range

-40° to +85°C (-40° to +185°F), per IEC 60068-2-1 and 60068-2-2.

Operating Environment

| | |
|-----------------------|----------------------|
| Pollution Degree: | 2 |
| Overvoltage Category: | II |
| Insulation Class: | 1 |
| Relative Humidity: | 5–95%, noncondensing |
| Maximum Altitude: | 2000 m |

Processing and Memory

32-bit 200 MHz Processor
32 MB DDR RAM
Battery-Backed Real-Time Clock

Dimensions

See Figure 4.

Weight

2.0 kg (4.4 lb)

Frequency

System Frequency: 50, 60 Hz

Inputs

AC Current Input Phase

| | |
|--|--|
| I_{NOM} | 5 A |
| Rated Range: | 0.1–96.0 A (according to IEC 60255-5, 60664-1) |
| Note: This is a linearity specification and is not meant to imply continuous operation. | |
| Continuous Thermal Rating: | 15 A (according to IEC 60255-6, IEEE C37.90-1989) |
| 1 Second Thermal: | 500 A (according to IEC 60255-6) |
| Rated Frequency: | 50/60 ± 5 Hz |
| Burden (Per Phase): | <0.050 VA |
| Measurement Category: | II |

AC Voltage Input V_{NOM}

| | |
|--|--------------|
| Rated Operating Voltage (U _e): | 100–250 Vac |
| Rated Insulation Voltage: | 300 Vac |
| 10-Second Thermal: | 600 Vac |
| Rated Frequency: | 50/60 ± 5 Hz |
| Burden: | <0.1 W |

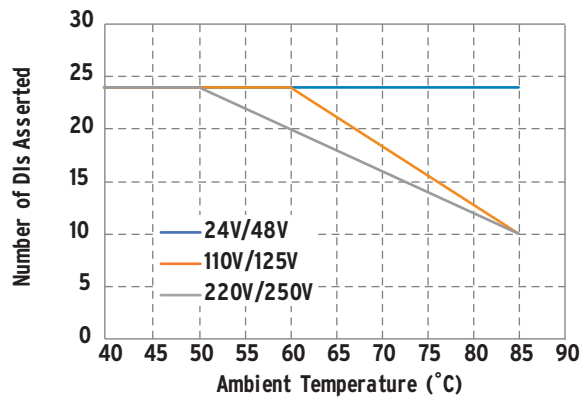
DC Transducer (Analog) Inputs

| | |
|--------------------------------------|---|
| Input Impedance: | |
| Current Mode: | 200 Ω |
| Voltage Mode: | >10 kΩ |
| Input Range (Maximum): | ±20 mA (transducers: 4–20 mA, 0–20 mA, or 0–1 mA typical) ±10 V (transducers: 0–5 V or 0–10 V typical) |
| Sampling Rate: | At least 5 ms |
| Step Response: | 1 s |
| Accuracy at 25°C: | |
| ADC: | 16 bit |
| With user calibration: | 0.05% of full scale (current mode) 0.025% of full scale (voltage mode) |
| Without calibration: | Better than 0.5% of full scale at 25°C |
| Accuracy Variation With Temperature: | ±0.015% per °C of full scale (±20 mA or ±10 V) |

Optoisolated Control Inputs

| | | |
|------------------------------------|----------------------|--------------------|
| When Used With DC Control Signals: | | |
| 250 V | ON for 200–275 Vdc | OFF below 150 Vdc |
| 220 V | ON for 176–242 Vdc | OFF below 132 Vdc |
| 125 V | ON for 100–135.5 Vdc | OFF below 75 Vdc |
| 110 V | ON for 88–121 Vdc | OFF below 66 Vdc |
| 48 V | ON for 38.4–52.8 Vdc | OFF below 28.8 Vdc |
| 24 V | ON for 15–30 Vdc | OFF for < 5 Vdc |
| When Used With AC Control Signals: | | |
| 250 V | ON for 170.6–275 Vac | OFF below 106 Vac |
| 220 V | ON for 150.3–264 Vac | OFF below 93.2 Vac |
| 125 V | ON for 85–150 Vac | OFF below 53 Vac |
| 110 V | ON for 75.1–132 Vac | OFF below 46.6 Vac |
| 48 V | ON for 32.8–60 Vac | OFF below 20.3 Vac |
| 24 V | ON for 14–27 Vac | OFF below 5 Vac |

| | |
|--|---------------------------------|
| Current Draw at Nominal | |
| DC Voltage: | 2–4 mA (Except for 240 V, 8 mA) |
| Rated Insulation Voltage: | 300 Vac |
| Rated Impulse Withstand Voltage (U _{imp}): | 4000 V |



Time-Code Input (SNTP)

| | |
|--------------------------------|--------|
| High-Priority Server Accuracy: | ±5 ms |
| Accuracy: | ±25 ms |

Outputs

General

| | |
|---|------------------------|
| OUT103 is Form C Trip Output, all other outputs are Form A. | |
| Dielectric Test Voltage: | 2000 Vac |
| Impulse Withstand Voltage (U_{imp}): | 4000 V |
| Mechanical Durability: | 10M no load operations |

DC Output Ratings

| | |
|--|--|
| Electromechanical | |
| Rated Operational Voltage: | 250 Vdc |
| Rated Voltage Range: | 19.2–275 Vdc |
| Rated Insulation Voltage: | 300 Vdc |
| Make: | 30 A @ 250 Vdc per IEEE C37.90 |
| Continuous Carry: | 6 A @ 70°C; 4 A @ 85°C |
| Continuous Carry (UL/CSA Derating with All Outputs Asserted): | 5 A @ <60°C; 2.5 A 60 to 70°C |
| Thermal: | 50 A for 1 s |
| Contact Protection: | 360 Vdc, 40 J MOV protection across open contacts |
| Operating Time (coil energization to contact closure, resistive load): | Pickup or Dropout time ≤8 ms typical |
| Breaking Capacity (10,000 operations) per IEC 60255-0-20:1974: | 24 Vdc 0.75 A L/R = 40 ms 48 Vdc 0.50 A L/R = 40 ms 125 Vdc 0.30 A L/R = 40 ms 250 Vdc 0.20 A L/R = 40 ms |
| Cyclic Capacity (2.5 cycles/second) per IEC 60255-0-20:1974: | 24 Vdc 0.75 A L/R = 40 ms 48 Vdc 0.50 A L/R = 40 ms 125 Vdc 0.30 A L/R = 40 ms 250 Vdc 0.20 A L/R = 40 ms |
| Fast Hybrid (High-Speed High-Current Interrupting) | |
| Make: | 30 A |
| Carry: | 6 A continuous carry at 70°C 4 A continuous carry at 85°C |
| 1 s Rating: | 50 A |
| MOV Protection (Maximum Voltage): | 250 Vac/330 Vdc |
| Pickup Time: | <50 μs, resistive load |
| Dropout Time: | 8 ms, resistive load |
| Update Rate: | 1/8 cycle |

Breaking Capacity (10,000 Operations):

| | | |
|---------|--------|-------------|
| 48 Vdc | 10.0 A | L/R = 40 ms |
| 125 Vdc | 10.0 A | L/R = 40 ms |
| 250 Vdc | 10.0 A | L/R = 20 ms |

Cyclic Capacity (4 Cycles in 1 Second, Followed by 2 Minutes Idle for Thermal Dissipation):

| | | |
|---------|--------|-------------|
| 48 Vdc | 10.0 A | L/R = 40 ms |
| 125 Vdc | 10.0 A | L/R = 40 ms |
| 250 Vdc | 10.0 A | L/R = 20 ms |

Note: Per IEC 60255-23:1994, using the simplified method of assessment.

Note: Make rating per IEEE C37.90-1989.

AC Output Ratings

Electromechanical

| | |
|---|---|
| Maximum Operational Voltage (U_o) Rating: | 240 Vac |
| Insulation Voltage (U_i) Rating (excluding EN 61010-1): | 300 Vac |
| Utilization Category: | AC-15 (control of electromagnetic loads >72 VA) |
| Contact Rating Designation: | B300 (B = 5 A, 300 = rated insulation voltage) |
| Voltage Protection Across Open Contacts: | 270 Vac, 40 J |
| Rated Operational Current (I_o): | 3 A @ 120 Vac 1.5 A @ 240 Vac |
| Conventional Enclosed Thermal Current (I_{the}) Rating: | 5 A |
| Rated Frequency: | 50/60 ±5 Hz |
| Pickup/Dropout Time: | ≤8 ms (coil energization to contact closure) |

| | |
|--|---------------------------|
| Electrical Durability Make VA Rating: | 3600 VA, $\cos\phi = 0.3$ |
| Electrical Durability Break VA Rating: | 360 VA, $\cos\phi = 0.3$ |

Fast Hybrid (High-Speed High-Current Interrupting)

| | |
|-----------------------------------|--|
| Make: | 30 A |
| Carry: | 6 A continuous carry at 70°C 4 A continuous carry at 85°C |
| 1 s Rating: | 50 A |
| MOV Protection (Maximum Voltage): | 250 Vac/330 Vdc |
| Pickup Time: | <50 μs, resistive load |
| Dropout Time: | 8 ms, resistive load |
| Update Rate: | 1/8 cycle |

Breaking Capacity (10,000 Operations):

| | | |
|---------|--------|-------------|
| 48 Vac | 10.0 A | L/R = 40 ms |
| 125 Vac | 10.0 A | L/R = 40 ms |
| 250 Vac | 10.0 A | L/R = 20 ms |

Cyclic Capacity (4 Cycles in 1 Second, Followed by 2 Minutes Idle for Thermal Dissipation):

| | | |
|---------|--------|-------------|
| 48 Vac | 10.0 A | L/R = 40 ms |
| 125 Vac | 10.0 A | L/R = 40 ms |
| 250 Vac | 10.0 A | L/R = 20 ms |

Note: Per IEC 60255-23:1994, using the simplified method of assessment.

Note: Make rating per IEEE C37.90-1989.

Analog Outputs

| | |
|---------------------------------------|---------|
| Current Ranges (Max): | ±20 mA |
| Voltage Ranges (Max): | ±10 V |
| Output Impedance For Current Outputs: | ≥100 kΩ |
| Output Impedance For Voltage Outputs: | ≤20 Ω |

| | |
|----------------|---|
| Maximum Load: | 0–750 Ω current mode >2 k Ω voltage mode |
| Accuracy: | $\pm 0.55\%$ of full-scale at 25°C |
| Step Response: | 100 ms |

Communications

Communications Ports

Standard EIA-232 (2 Ports)

| | |
|-------------------|---------------------------|
| Location (fixed): | Front Panel Rear Panel |
|-------------------|---------------------------|

| | |
|-------------|---------------|
| Data Speed: | 300–38400 bps |
|-------------|---------------|

Ethernet Port

| |
|---|
| Dual 10/100BASE-T copper (RJ45 connector) |
|---|

Communications Protocols

Modbus RTU slave or Modbus TCP
 DNP3 Level 2 Outstation (LAN/WAN and Serial)
 Ethernet FTP
 Telnet
 SEL MIRRORING BITS (MBA, MBB, MB8A, MB8B, MBTB)
 Ymodem file transfer on the front and rear port
 Xmodem file transfer on the front port
 SEL ASCII and Compressed ASCII
 SEL Fast Meter
 SEL Fast Operate
 SEL Fast SER
 SEL Fast Message unsolicited write
 SEL Fast Message read request

Maximum Concurrent Connections

| | |
|--------------------------|----------------|
| Modbus Slave: | 2 ^a |
| DNP3 Level 2 Outstation: | 5 ^a |
| Ethernet FTP: | 2 |
| Telnet: | 3 |

^a Maximum in any combination of serial and/or LAN/WAN links.

Power Supply

Rated Supply Voltage

| | |
|---------------------|--------------------------------------|
| Low-Voltage Model: | 24/48 Vdc |
| High-Voltage Model: | 125/250 Vdc 120/240 Vac, 50/60 Hz |

Input Voltage Range

| | |
|---------------------|--------------------------|
| Low-Voltage Model: | 18–60 Vdc |
| High-Voltage Model: | 85–275 Vdc 85–264 Vac |

Power Consumption

| | |
|-----|--------|
| AC: | <40 VA |
| DC: | <15 W |

Interruptions

| | |
|---------------------|---|
| Low-Voltage Model: | 10 ms @ 24 Vdc 50 ms @ 48 Vdc |
| High-Voltage Model: | 50 ms @ 125 Vac/Vdc 100 ms @ 250 Vac/Vdc |

Fuse Rating

| | |
|---------------------|---|
| High-Voltage Model: | 3.15 A, high breaking capacity, time lag T, 250 V (5x20 mm, T3.15AH 250 V) |
| Low-Voltage Model: | 3.15 A, high breaking capacity, time lag T, 250 V (5x20 mm, T3.15AH 250 V) |

AC Metering Accuracies

Current

| | |
|---------------------------------------|--|
| Phase Current: | $\pm 0.5\%$ typical, 25°C, 60 Hz, nominal current |
| Neutral Current: | $\pm 0.5\%$ typical, 25°C, 60 Hz, nominal current |
| Negative Sequence (3I ₂): | $\pm 0.5\%$ typical, 25°C, 60 Hz, nominal current (calculated) |
| Residual Ground Current: | $\pm 0.5\%$ typical, 25°C, 60 Hz, nominal current (calculated) |

Voltage

| | |
|---------------------------------------|--|
| Line-to-Neutral Voltage: | $\pm 0.08\%$ typical, 25°C, 60 Hz, nominal voltage |
| Line-to-Line Voltage: | $\pm 0.08\%$ typical, 25°C, 60 Hz, nominal voltage |
| Negative Sequence (3V ₂): | $\pm 0.5\%$ typical, 25°C, 60 Hz, nominal voltage (calculated) |

Frequency

| |
|--|
| ± 0.05 Hz (V ₁ > 60 V) with voltage tracking from 44.00–66.00 Hz |
| ± 0.10 Hz (I ₁ > 0.8 • I _{NOM}) with current tracking from 44.00–66.00 Hz |

Power

| | |
|------------------------------------|--|
| Three-Phase Real Power (kW): | $\pm 1\%$ typical, 25°C, 60 Hz, nominal voltage and current with $0.70 \leq PF \leq 1.00$; $\pm 5\%$ of reading, worst case |
| Three-Phase Reactive Power (kVAR): | $\pm 1\%$ typical, 25°C, 60 Hz, nominal voltage and current with $0.00 \leq PF \leq 0.30$; $\pm 5\%$ of reading, worst case |
| Three-Phase Apparent Power (kVA): | $\pm 1\%$ typical, 25°C, 60 Hz, nominal voltage and current; $\pm 2\%$ of reading, worst case |

Power Factor

| | |
|------------------------------|---|
| Three-Phase (Wye Connected): | $\pm 1\%$ typical, 25°C, 60 Hz, nominal voltage and current for $0.97 \leq PF \leq 1.00$; $\pm 2\%$ of reading, worst case |
|------------------------------|---|

Fast Analog Alarm Pickup

| | |
|----------|----------------------------------|
| Voltage: | $\pm 5\%$ of setting ± 0.5 V |
|----------|----------------------------------|

Sampling and Processing Specifications

Without Voltage Card or Current Card

| | |
|-----------------|---|
| Analog Inputs | |
| Sampling Rate: | Every 4 ms |
| Digital Inputs | |
| Sampling Rate: | 2 kHz |
| Contact Outputs | |
| Refresh Rate: | 2 kHz |
| Logic Update: | Every 4 ms |
| Analog Outputs | |
| Refresh Rate: | Every 4 ms |
| New Value: | Every 100 ms |
| Timer Accuracy | |
| | $\pm 0.5\%$ of settings and $\pm 1/4$ cycle |

With Either Voltage Card, Current Card, or Both Voltage and Current Cards

| | |
|-----------------|----------------|
| Analog Inputs | |
| Sampling Rate: | 4 times/cycle |
| Digital Inputs | |
| Sampling Rate: | 32 times/cycle |
| Contact Outputs | |
| Refresh Rate: | 32 times/cycle |
| Logic Update: | 4 times/cycle |
| Analog Outputs | |
| Refresh Rate: | 4 times/cycle |
| New Value: | Every 100 ms |

Timer Accuracy
± 0.5% of settings and ± 1/4 cycle

Processing Specifications

AC Voltage and Current Inputs: 16 samples per power system cycle

Frequency Tracking Range: 44–66 Hz

Digital Filtering: Cycle cosine after low-pass analog filtering. Net filtering (analog plus digital) rejects dc and all harmonics greater than the fundamental.

Control Processing: Four times per power system cycle or 4 ms if no current or voltage card (except for math variables and analog signals used in logic, which are processed every 100 ms)

Surge Withstand Capability Immunity: IEC 60255-22-1:2005
2.5 kV common-mode
2.5 kV differential-mode
1 kV common-mode on comm. ports
IEEE C37.90.1-2002

Conducted RF Immunity: IEC 61000-4-6:2004, 10 Vrms

Magnetic Field Immunity: IEC 61000-4-8:2001
1000 A/m for 3 seconds
100 A/m for 1 minute

EMC Emissions

Radiated and Conducted Emissions: EN 55011:1998 + A1:1999 + A2:2002, Class A
Canada ICES-001 (A) / NMB-001 (A)

Type Tests

Environmental Tests

Enclosure Protection: IEC 60529:2001
IP65 enclosed in panel
IP20 for terminals

Vibration Resistance: IEC 60255-21-1:1988, Class 1
IEC 60255-21-3:1993, Class 2

Shock Resistance: IEC 60255-21-2:1988, Class 1

Cold: IEC 60068-2-1:1990 + A1:1993
+ A2:1994
–40°C, 16 hours

Damp Heat, Steady State: IEC 60068-2-78:2001
40°C, 93% relative humidity, 4 days

Damp Heat, Cyclic: IEC 60068-2-30:1980 + A1:1985
25–55°C, 6 cycles,
95% relative humidity

Dry Heat: IEC 60068-2-2:1974 + A1:1993
+ A2:1994
85°C, 16 hours

Dielectric Strength and Impulse Tests

Dielectric (HIPOT): IEC 60255-5:2000
IEEE C37.90-1989
2.0 kVac on ac current and voltage inputs, analog inputs, contact I/O
2.83 kVdc on power supply and analog outputs

Impulse: IEC 60255-5:2000
0.5 J, 4.7 kV on power supply, contact I/O, voltage and current inputs
0.5 J, 530 V on analog inputs and analog outputs

RFI and Interference Tests

EMC Immunity

Electrostatic Discharge Immunity: IEC 61000-4-2:2001
Severity Level 4
8 kV contact discharge
15 kV air discharge

Radiated RF Immunity: IEC 61000-4-3:2002, 10 V/m
IEEE C37.90.2-1995, 35 V/m

Fast Transient, Burst Immunity: IEC 61000-4-4:1995 + A1:2001
4 kV @ 2.5 kHz
2 kV @ 5.0 kHz for comm. ports

Surge Immunity: IEC 61000-4-5:2001
2 kV line-to-line
4 kV line-to-earth

Technical Support

We appreciate your interest in SEL products and services. If you have questions or comments, please contact us at:

Schweitzer Engineering Laboratories, Inc.
 2350 NE Hopkins Court
 Pullman, WA 99163-5603 U.S.A.
 Tel: +1.509.338.3838
 Fax: +1.509.332.7990
 Internet: selinc.com/support
 Email: info@selinc.com

© 2016-2022 by Schweitzer Engineering Laboratories, Inc. All rights reserved.

All brand or product names appearing in this document are the trademark or registered trademark of their respective holders. No SEL trademarks may be used without written permission. SEL products appearing in this document may be covered by U.S. and Foreign patents.

Schweitzer Engineering Laboratories, Inc. reserves all rights and benefits afforded under federal and international copyright and patent laws in its products, including without limitation software, firmware, and documentation.

The information in this document is provided for informational use only and is subject to change without notice. Schweitzer Engineering Laboratories, Inc. has approved only the English language document.

This product is covered by the standard SEL 10-year warranty. For warranty details, visit selinc.com or contact your customer service representative.

SEL-2411P Pump Automation Controller Data Sheet

SCHWEITZER ENGINEERING LABORATORIES, INC.

2350 NE Hopkins Court • Pullman, WA 99163-5603 U.S.A.
 Tel: +1.509.332.1890 • Fax: +1.509.332.7990
 selinc.com • info@selinc.com



Date Code 20221221