



## Low-Profile, Hinged, Wall-Mount Bracket Kits 915900255, 915900317, 915900318, and 915900319

### Introduction

These kits allow you to mount vertical SEL-7xx meter devices to a flat surface and hinge the device for easy access to the rear panel. You can mount the hinge on either side of the device, allowing it to hinge to either the left or right. The bracket also provides lockout and tagout holes for mechanical sealing, facilitating maintenance and repair. The bracket kit contains three pieces: the latch plate, hinge mount, and latch mount.

Kits also contain a wiring harness for installation. The wiring harness allows you to connect an SEL-735 meter to an FT-1 test switch or other terminals. The wiring harness has ring terminals and connectors connected to one end of the harness, allowing connection to an SEL-735 meter. The other end of the wiring harness does not have terminations, but ring terminals are provided to connect the wiring harness to a test switch or other terminals.

**NOTE:** Meter not included.



**Figure 1 Bracket Kit Mounted to Device (Kit 915900318 Shown)**

### Kit Contents

- Test switch wiring (included in Kits 915900317, 915900318, and 915900319)
- DB-9 Serial Ribbon Cables
  - 1 cable in Kit 915900317
  - 2 cables in Kit 915900318
  - 3 cables in Kit 915900319
- 1 Hinge Mount
- 1 Latch Mount
- 1 Latch Plate

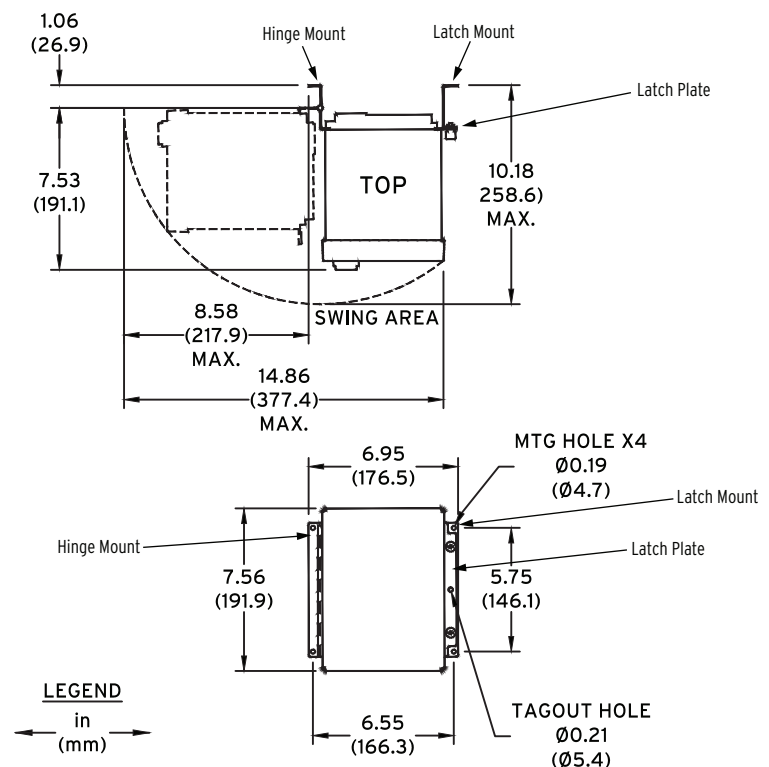
## Equipment Needed

- 3/8" Nut Driver
- 1/4" Drill Bit
- #2 Phillips® Screwdriver

## Installation

The bracket kit consists of three pieces: the latch plate, hinge mount, and latch mount. The hinge mount and latch plate both bolt to the back of the device. The hinge mount allows the device to hinge, while the latch plate provides the latch when the device is not hinged open. The hinge mount and latch mount both bolt to the surface that the device mounts to.

- Step 1. Drill mounting holes in the surface to the specifications shown in *Figure 2*.
- Step 2. Remove the five #2 screws and the hex screw from the long edge of the rear panel of the device.
- Step 3. Attach the latch plate piece to either side of the rear panel and secure with the screws removed in *Step 2*.
- Step 4. Attach the hinge mount piece to the other side of the rear panel. Secure it with the remaining screws removed in *Step 2*.
- Step 5. Attach the latch mount piece to the latch plate and tighten the capture screws.
- Step 6. Mount the latch mount and hinge mount pieces to the mounting holes created in *Step 1*.



i9294a

**Figure 2 Hinge Bracket Dimensions**

### ⚠ WARNING

Operator safety may be impaired if the device is used in a manner not specified by SEL.

© 2013 by Schweitzer Engineering Laboratories, Inc. All rights reserved.

All brand or product names appearing in this document are the trademark or registered trademark of their respective holders. No SEL trademarks may be used without written permission. SEL products appearing in this document may be covered by U.S. and Foreign patents.

Schweitzer Engineering Laboratories, Inc. reserves all rights and benefits afforded under federal and international copyright and patent laws in its products, including without limitation software, firmware, and documentation.

The information in this document is provided for informational use only and is subject to change without notice. Schweitzer Engineering Laboratories, Inc. has approved only the English language document.

This product is covered by the standard SEL 10-year warranty. For warranty details, visit [www.selinc.com](http://www.selinc.com) or contact your customer service representative.

### ⚠ AVERTISSEMENT

La sécurité de l'opérateur peut être compromise si l'appareil est utilisé d'une façon non indiquée par SEL.

## SCHWEITZER ENGINEERING LABORATORIES

2350 NE Hopkins Court • Pullman, WA 99163-5603 USA

Phone: +1.509.332.1890 • Fax: +1.509.332.7990

Internet: [www.selinc.com](http://www.selinc.com) • E-mail: [info@selinc.com](mailto:info@selinc.com)

