

# ACSELERATOR<sup>®</sup> Meter Reports

Software



## Transform your metering data into action

- Monitor resource consumption across your system using customized reports.
- Identify system losses and times of peak consumption to save energy and reduce demand charges.
- Analyze historical data to predict system trends and allocate resources.
- Capture system-wide and local power quality disturbances using voltage sag, swell, and interruption (VSSI) reports.









## Transform Metering Data Into Action

Organize, visualize, and optimize energy usage by combining powerful SEL meters with ACSELERATOR Meter Reports SEL-5630 Software.

SEL meters help you monitor electric load profiles and power quality across your system. SEL meters can process pulse data to monitor consumption of resources, such as water, air, gas, electricity, and steam. ACSELERATOR TEAM® SEL-5045 Software automatically retrieves and stores metering data from these resources in a centralized database.

Meter Reports Software helps you visualize the metering data collected and stored by ACSELERATOR TEAM. With Meter Reports, operators can quickly identify trends and opportunities for improvement as well as validate usage patterns. Moreover, in just a few clicks, operators can email a PDF or export a report in Microsoft® Excel® for sharing with others or for further analysis.



# Organize, Visualize, and Optimize Resources

Meter Reports Software enhances the visualization and analysis of data captured by SEL meters. The software offers interactive charts, fast database interrogation, and the ability to customize metering reports for utilities, industrial operations, and site-wide campus monitoring.

Meter Reports Software displays the information so that you can drive planning, operating, and accounting decisions that will increase efficiency and reduce costs.

## Manage Site-Wide Energy and Resources

Organize data from site-wide metering points and visualize trends. SEL meters include up to six pulse inputs and provide data from water, air, gas, or steam meters. Meter Reports Software displays trends of each resource, making it easy to analyze historical usage and estimate future requirements.

## Avoid Peak Demands

Meter Reports Software provides charts and reports to visualize the consumption of energy. With these data, operators can avoid peak demands and optimize a schedule that moves overlapping electric processes to off-peak hours. Over time, the trends in data can support planning decisions.

## Assess the Impact of Voltage Disturbances

ITI (CBEMA) curves and detailed voltage event graphs can help both plant operators and power producers resolve issues before they affect equipment. The ITI curve classifies voltage events to indicate disturbance severities that cause malfunctions, such as insulation failure, overvoltage trip, or load dropout.

## Direct Database Interface

ACSELERATOR Database API SEL-5230 Software provides third-party software tools with access to data in the ACSELERATOR Database. This allows different enterprise level systems, such as an energy management system (EMS), a billing system, to integrate data reporting. SEL offers two API configuration options, depending on the database integration and client requirements.

## Accessing Data From Non-SEL Devices

TEAM Profile is compatible with the SEL-735 Power Quality and Revenue Meter, SEL-734 Advanced Metering System, and SEL-751A Feeder Protection Relay. For other devices, including non-SEL IEDs, use an SEL Real-Time Automation Controller (RTAC) to collect trend data. The RTAC sends data to the TEAM database using the TrendRecorder library providing you a single database with data from all of your devices.

## Customize Reports With Built-In Tools

With Meter Reports, easily visualize data, filter events, add labels to data points, and find the max., min., or difference in a user-friendly interface.

## Available Reports

The Standard Reports Package includes the following seven reports:

- Sequential Events Recorder (SER)
- Load data profile (LDP)
- Energy balance
- Voltage sag, swell, and interruption (VSSI) summary (CBEMA chart)
- VSSI details
- Water, air, gas, electricity, and steam (WAGES) monitoring
- Device overview

Visit [selinc.com/SEL-5630](http://selinc.com/SEL-5630) to download a 60-day demo.

Embed math and logic functions, and customize company information, colors, fonts, layout, and more.

Open multiple reports within tabs.

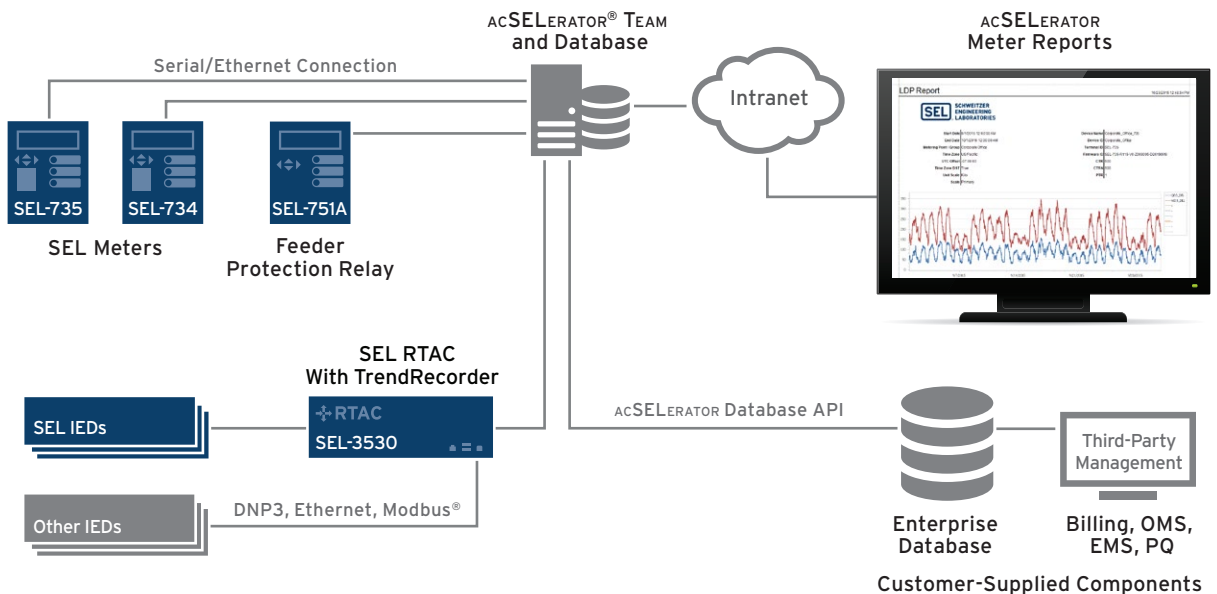
Conveniently email or export reports.



Aggregate metering points to add or subtract channels.

Add labels on interactive charts.

Quickly view relevant device information in each report.

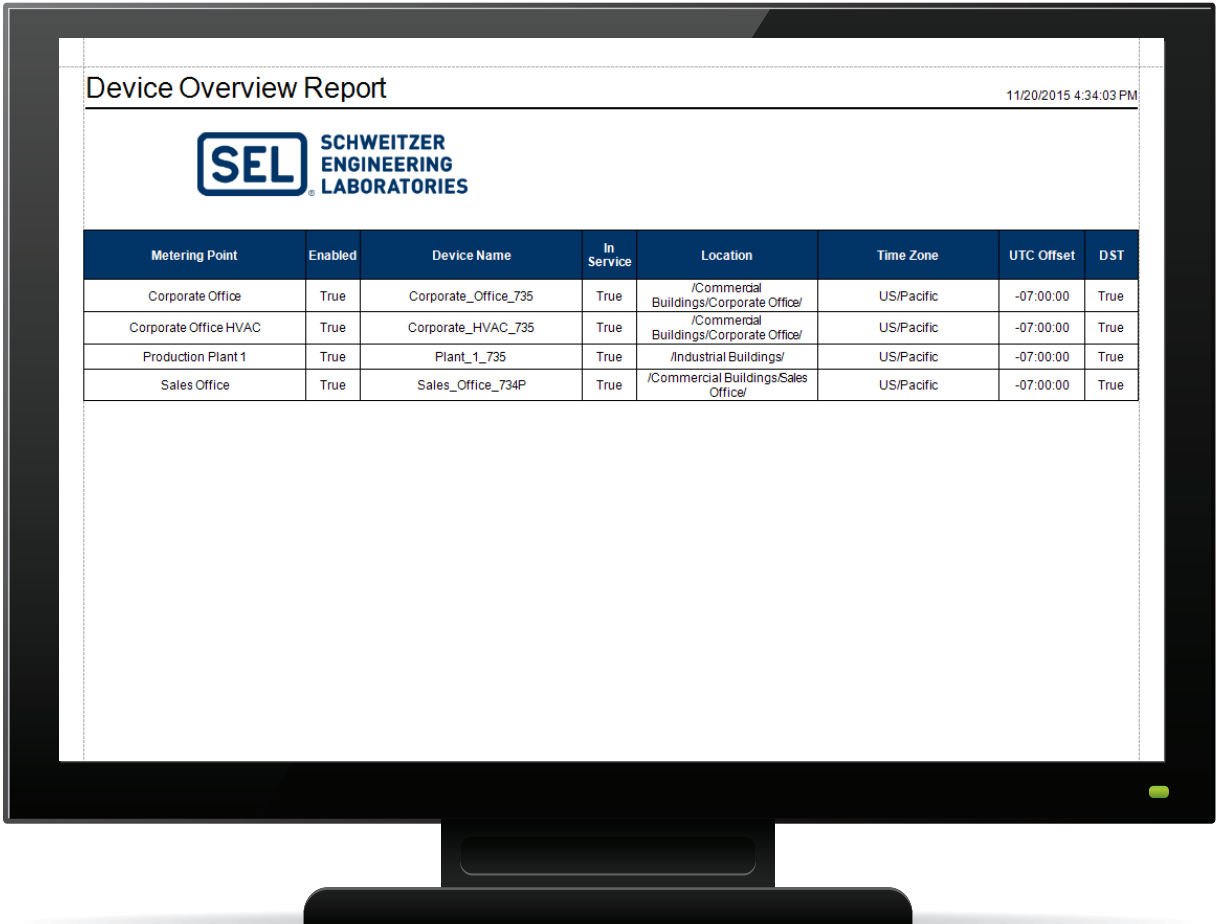


SEL solutions simplify site-wide metering and system integration.





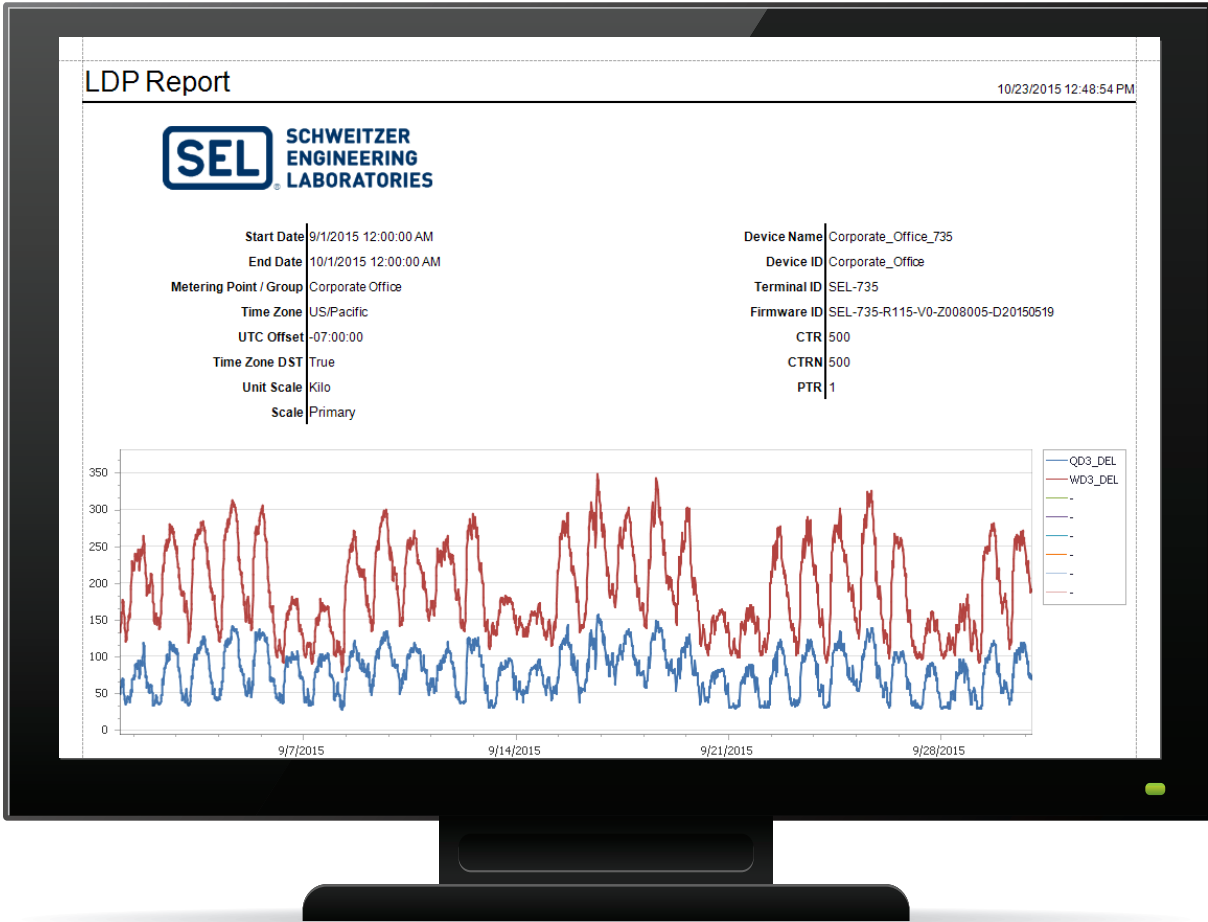




## Device Overview Report

Organize and manage all your metering assets from one central location.

View all of your metering assets, and display system device information, including metering point names, locations, and time zone details. The Device Overview Report also indicates whether collection is enabled for the acSELERATOR TEAM Database, making it easy to track and manage data.

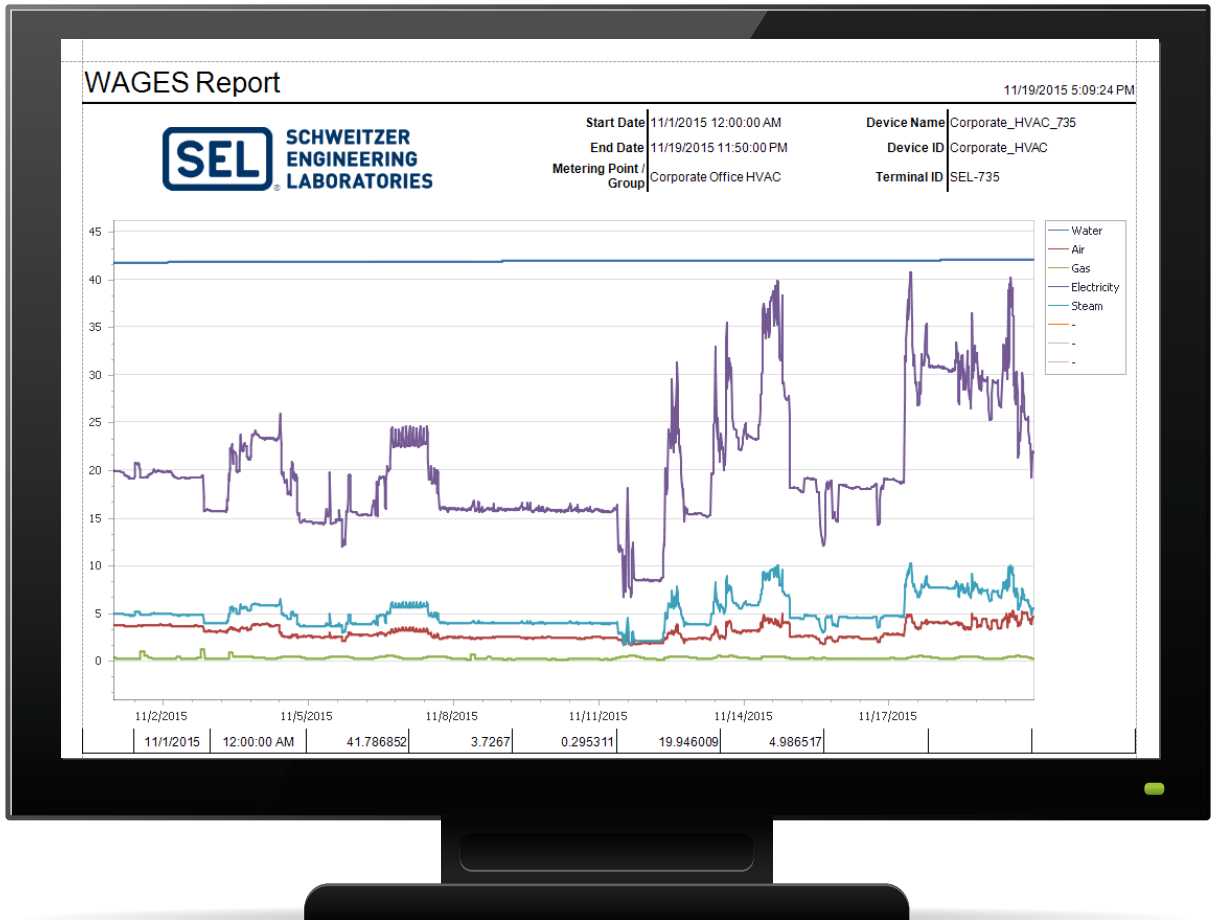


# Load Data Profile (LDP) Report

Avoid peak demands by analyzing the electrical usage for processes in your facility.

Refine LDP data selection with an interactive view of the information for a specified time period. Create a report or hover your mouse over data points to view channel values at that point in time. Analyze trends and inspect records with graphical and tabular views of LDP information from a metering point, device, or group that you select.





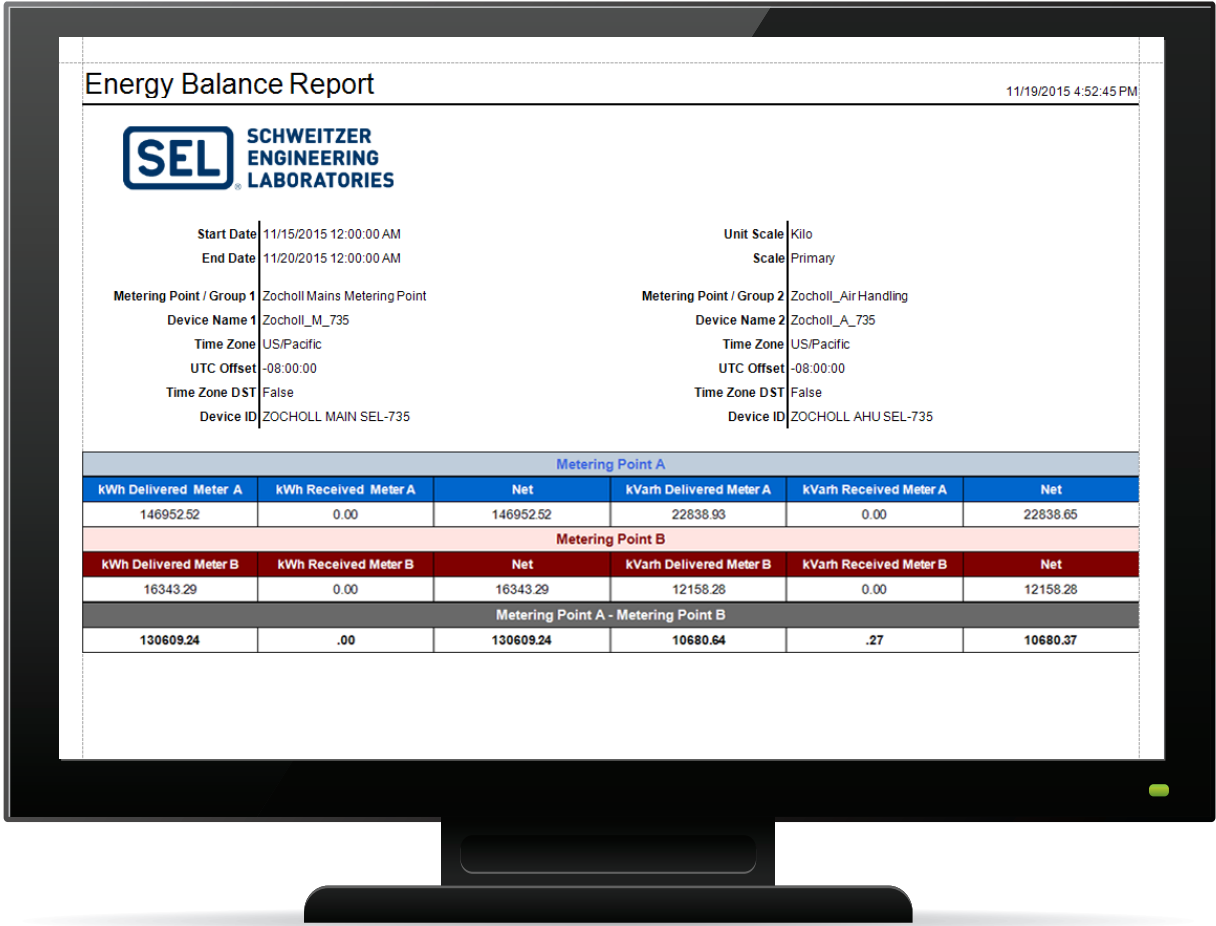
## WAGES Report

Combine WAGES consumption in one report.

Associate the cost of WAGES with the appropriate department, and calculate performance efficiency, such as kWh per cubic meters (m<sup>3</sup>) of water pumped. Data analytics enable you to effectively implement changes to reduce cost, track efficiency measures, and identify unused resources.







# Energy Balance Report

Calculate the difference between energy values at various metering points to determine losses or to identify usage at unmetered points.

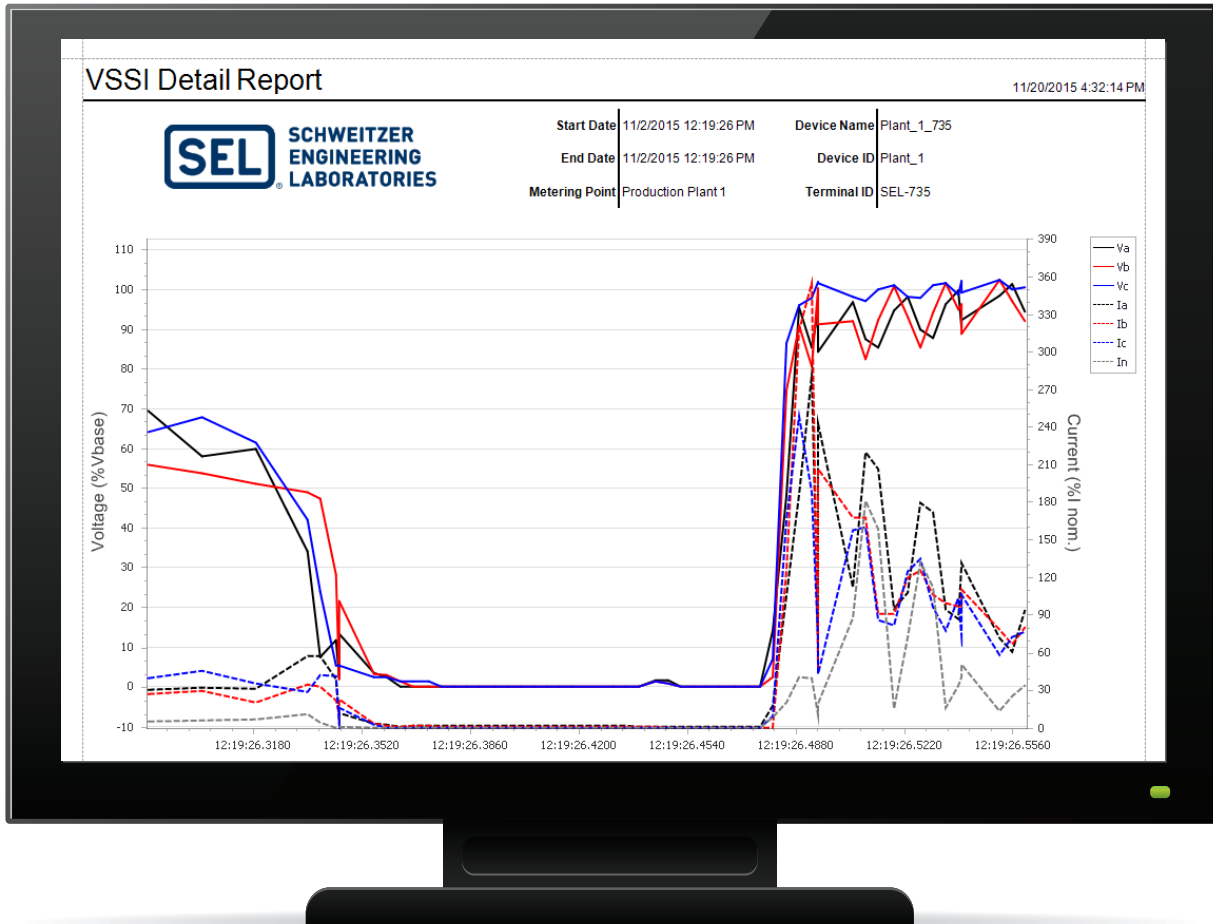
The report takes two pairs of channels (one delivered and one received in each pair), calculates the net value for each pair, and then subtracts the second metering point from the first. The report shows the input values and calculated net values from each metering point and the difference between the metering points for each value.



# VSSI Summary Report

Quickly identify power quality incidents. Use the Information Technology Industry Council (ITI) chart to categorize and identify potentially damaging VSSI events. Determine the time, duration, severity, and location of power quality disturbances. Quickly assess event conditions with tabular summaries containing drill-down graphs and links to the specific information for each event.





## VSSI Detail Report

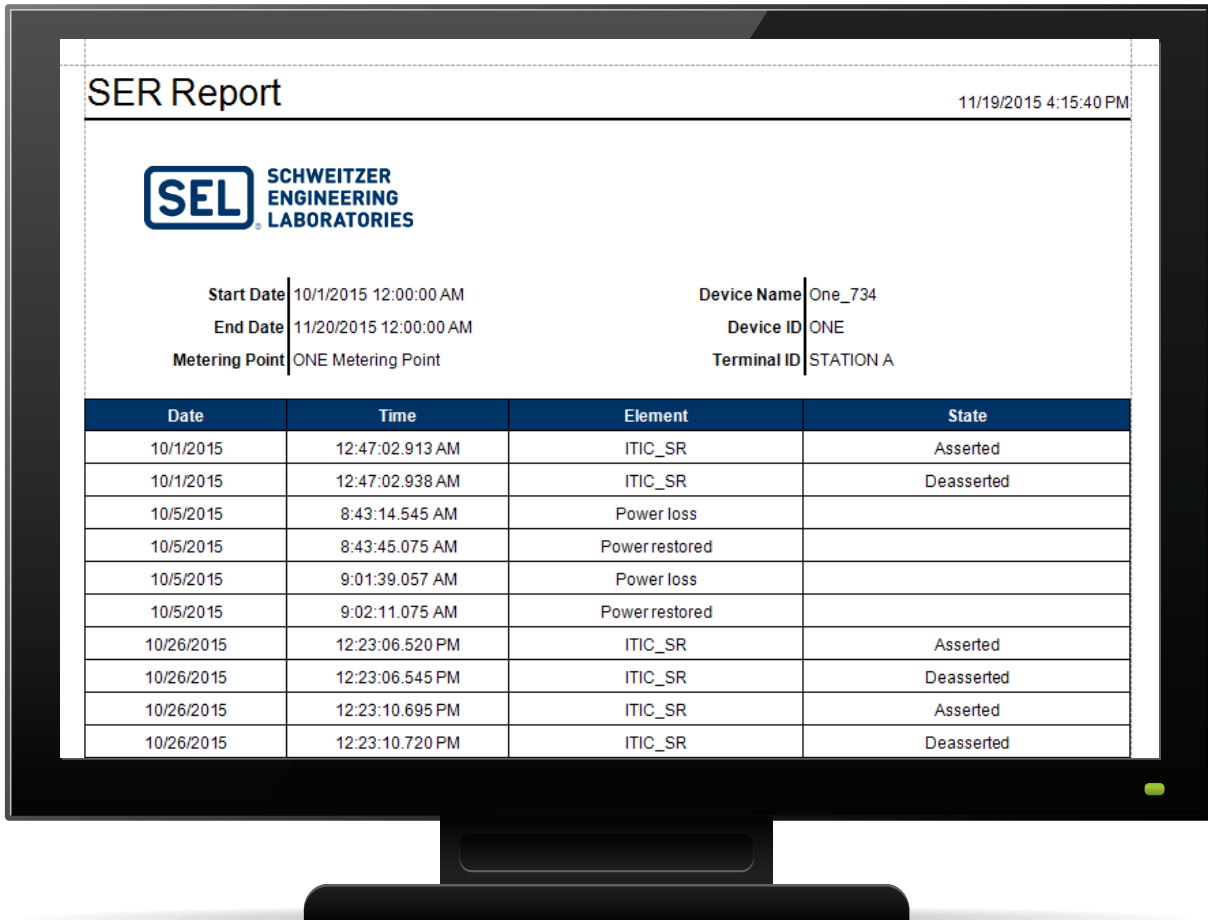
Investigate power quality events with VSSI data at your fingertips.

Perform VSSI event analysis with detailed VSSI data (using variable sampling rate records) in graphical and tabular format. Identify points of interest with 4 ms resolution. Determine the time, duration, severity, and location of power quality disturbances.









## SER Report

**Analyze the sequence of events from different locations.**

The SER in SEL devices monitors and records device events, such as power loss events, settings changes, voltage disturbances, or any change in the state of digital status bits.

The SER Report retrieves the SER data from the ACSELERATOR TEAM Database for a user-specified metering point and date range. Correlate SER data from multiple devices by viewing the reports side by side.

# SEL-5630 Specifications

## Requirements

<b>General</b>	Windows Server® 2008, 2012, 2012-R2, Windows 7, Windows 8/8.1, Windows 10 Microsoft .NET 4.5.1 framework Administrative privileges for installation SEL Compass® Software ACSELERATOR QuickSet® SEL-5030 Software The server or computer running ACSELERATOR TEAM Database, which contains the data collected, must be accessible via the network from the computer running Meter Reports.
<b>Hardware</b>	PC with dual-core 1.5 GHz or faster processor 2 GB or more RAM 200 MB of available disk space 1024 x 768 or higher resolution display
<b>Licensed Software</b>	ACSELERATOR Meter Reports license per each field device ACSELERATOR TEAM Profile Software license per each field device

## Try Meter Reports Today With the No-Charge Demo Mode Feature

Meter Reports Software includes a demo function where anyone with a mySEL account can download and evaluate all the reports and features at no charge. The built-in demo database replicates a real-world metering system, so it can operate without an active TEAM connection. The demo database includes sample data from SEL-734 and SEL-735 Meters for all seven different standard report types. Visit [selinc.com](http://selinc.com) for details.



Scan to watch the How to Use Meter Reports SEL-5630 Software video.

## SCHWEITZER ENGINEERING LABORATORIES

Making Electric Power Safer, More Reliable, and More Economical  
Tel: +1.509.332.1890 | Email: [info@selinc.com](mailto:info@selinc.com) | Web: [www.selinc.com](http://www.selinc.com)

© 2017 by Schweitzer Engineering Laboratories, Inc.  
PF00332 • 20171113

