

SEL-2664S Stator Ground Protection Relay

- Standard With Universal AC/DC Power Supply⁽¹⁾
- Dual 100BASE-FX MM LC Ethernet
- Multimode ST[®] Fiber-Optic Serial Port
- 2 EIA-232 Serial Ports
- 2 Self-Wetted Inputs
- 4 Standard Contact Outputs (1-Form C, 3-Form A)
- 8 Target LEDs
- IRIG-B Time Code Input
- Target Reset Button
- Conformal Coating
- ACSELERATOR QuickSet[®] SEL-5030 Software
- Protection Includes 64S, 59N, and 64F (with external SEL-2664 Field Ground Module connected)
- Protocols
 - SEL ASCII and Compressed ASCII
 - SEL File Transfer
 - SEL Fast Meter, Fast Operate, FAST SER
 - SEL MIRRORRED BITS[®] Communications
 - DNP3 Serial, DNP3 LAN/WAN
 - Modbus RTU, Modbus TCP/IP
 - IEC 61850
 - SNTP, Telnet, Ping, FTP
- UL Approved
- Includes SEL-4664 Calibration Module

Note: Please make sure to order a core balance CT (CBCT) from the accessories (Related parts) along with the SEL-2664S.

For application shown in Figure A: Order SEL P/N 915900352 (CBCT with 500:1 ratio).

For application shown in Figure B: Work through "Element 64S Setting Guideline" in Section 4 of the SEL-2664S Instruction Manual to determine whether to order SEL P/N 915900352 (CBCT with 500:1 ratio) or SEL P/N 915900286 (CBCT with 1000:1 ratio).

For application shown in Figure C: Order SEL P/N 915900286 (CBCT with 1000:1 ratio).

Part Number:

2 6 6 4 S 1 X X 8 3

Mounting

Standard (Wall Mount)										0									
Panel Mount*										1									
Panel Mount With Rack Mount Adapter Plate*										2									

Communications

Standard																		X	X	8	3
----------	--	--	--	--	--	--	--	--	--	--	--	--	--	--	--	--	--	---	---	---	---

Accessories

Fanox CT-1/80-41070, 50A, 500:1, 3.14" (80 mm) Diameter Window*	9	1	5	9	0	0	3	5	2
Allen Bradley 193-CBCT3, 1000:1 Turns Ratio, 180A Max Current, 2.50" Diameter Window*	9	1	5	9	0	0	2	8	6
Additional Calibration and Shunt Resistor Kit for SEL-2664S ^{(2)*}	9	1	5	9	0	0	5	1	7
SEL-4664 Calibration Module ^{(3)*}	4	6	6	4	-	0	0	0	1
SEL-2664S Mounting Conversion Kit*	9	1	5	9	0	0	3	1	0
SEL-C222 Serial Cable for Modem (RS-232, DTE-DCE, DB9 M/DB25 M, Hardware Flow Control)*	Please see Online MOT or contact SEL REP or CSR for ordering information.								
SEL-C227A Serial Cable for PC (RS-232, DTE-DTE, DB9 M/DB25 F, Hardware Flow Control)*	Please see Online MOT or contact SEL REP or CSR for ordering information.								
SEL-C234 Serial Cable (RS-232, DTE-DTE, DB9 M/DB9 F)*	Please see Online MOT or contact SEL REP or CSR for ordering information.								
SEL-C272 Serial Cable (RS-232, DTE-DTE, DB9 M/DB9 M, Hardware Flow Control)*	Please see Online MOT or contact SEL REP or CSR for ordering information.								
SEL-C273 Serial Cable (RS-232, DTE-DTE, DB9 M/DB9 M, IRIG-B)*	Please see Online MOT or contact SEL REP or CSR for ordering information.								
SEL-C805 Fiber-Optic Cable (200 um, Multimode)*	Please see Online MOT or contact SEL REP or CSR for ordering information.								
SEL-C807 Multimode Fiber-Optic Cable with ST connectors, 62.5 Micron Core Diameter (configurable length)*	Please see Online MOT or contact SEL REP or CSR for ordering information.								
SEL-C808 Fiber-Optic Cable (62.5/125 um, Multimode)*	Please see Online MOT or contact SEL REP or CSR for ordering information.								

* Additional Cost

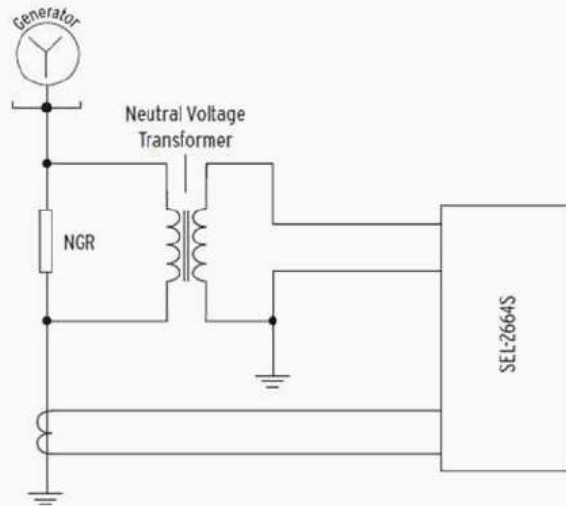
⁽¹⁾ Universal power supply nominal input voltage range: 125/250 Vdc; 120/240 Vac.

⁽²⁾ The SEL-2664S comes standard with one calibration and shunt resistor kit, including the Instruction Sheet.

⁽³⁾ The SEL-2664S comes standard with the SEL-4664 Calibration Module for auto field calibration process. An auto field calibration is recommended over manual calibration process if the module is available.

For fiber-optic connections between the SEL-2664 and SEL-2664S, please see online MOT(s) for SEL-C805 or SEL-C807 Multimode Fiber-Optic cable.

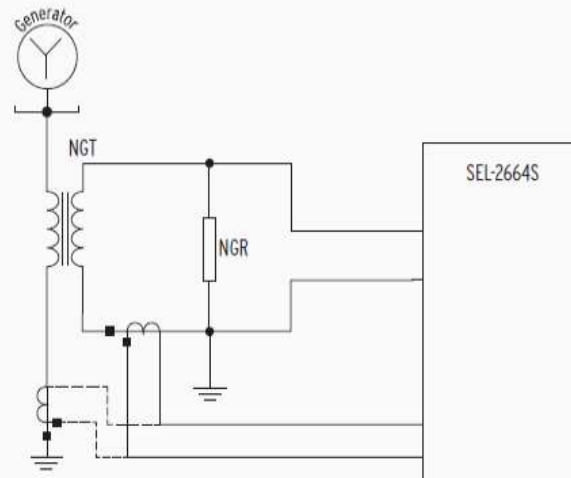
Figure A



Order SEL part number 915900352 (CBCT with 500:1 ratio)

AC Connections With CBCT on the Primary Side

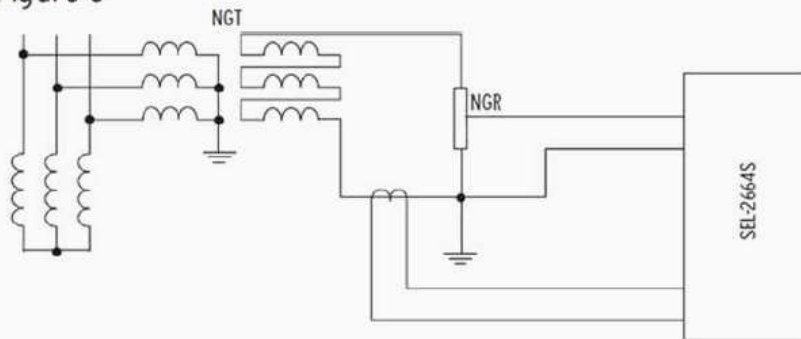
Figure B



Order SEL part number 915900352 (CBCT with 500:1 ratio) if CBCT is on primary
Order SEL part number 915900286 (CBCT with 1000:1 ratio) if CBCT is on secondary

AC Connection With CBCT on the Secondary Side of the Neutral Grounding Transformer

Figure C



Order SEL part number 915900286 (CBCT with 1000:1 ratio)

Making Electric Power Safer, More Reliable, and More Economical®

SEL SCHWEITZER ENGINEERING LABORATORIES, INC.

2350 NE Hopkins Court - Pullman, WA 99163 USA
Phone: +1.509.332.1890 - Fax: +1.509.332.7990