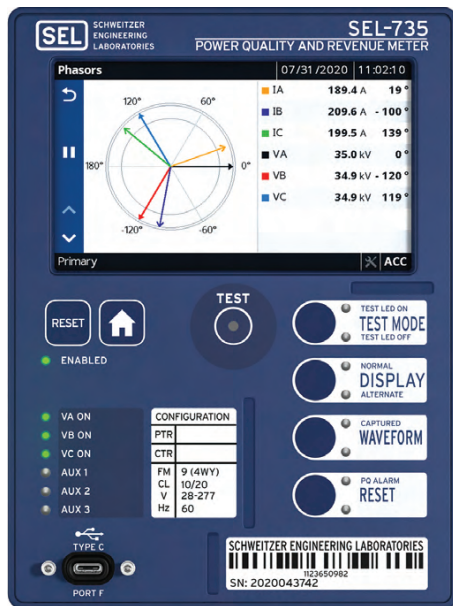




SEL-735 Power Quality and Revenue Meter

Precise Metering for High-Value Power Systems



Five-inch, color touchscreen display model



Formattable 1- and 3-line monochromatic LCD display model

Key Features and Benefits

The SEL-735 Power Quality and Revenue Meter combines leading power quality capabilities with exceptional revenue metering accuracy at an economical price.

- ▶ **Easily access data.** An optional touchscreen interface displays real-time waveforms, metered data, alarms, notifications, and settings.
- ▶ **Accurately allocate energy costs.** The SEL-735 outperforms ANSI and IEC accuracy standard requirements with a 0.06 percent Wh guarantee. It complies with ANSI C12.20-2015 Class 0.1 and IEC 62053-22 0.1 S accuracy class requirements over an extended operating range.
- ▶ **Capture every power quality disturbance.** Power quality reports with IEC 61000-4-30 Class A compliance and as much as 1 GB of onboard storage help visualize system conditions and store years of data.
- ▶ **Share critical information securely.** Simultaneously communicate with as many as ten other devices by using industry standard protocols, including DNP3, IEEE C37.118.1a-2014 synchrophasor measurements, Modbus, and IEC 61850. Port security settings allow three permission levels that provide controlled read and write access to the ports.
- ▶ **One meter for multiple applications.** Standardize on one meter across multiple applications with wide current and voltage measurement ranges, field upgradability, retrofit options, and software-based wiring form changes.

One Package, Three Flexible Solutions

Three SEL-735 variants provide a meter for any application and any budget. The 5.0" color touchscreen model comes standard with the Advanced PQ and Recording package.

Table 1 SEL-735 Power Quality and Recording Options

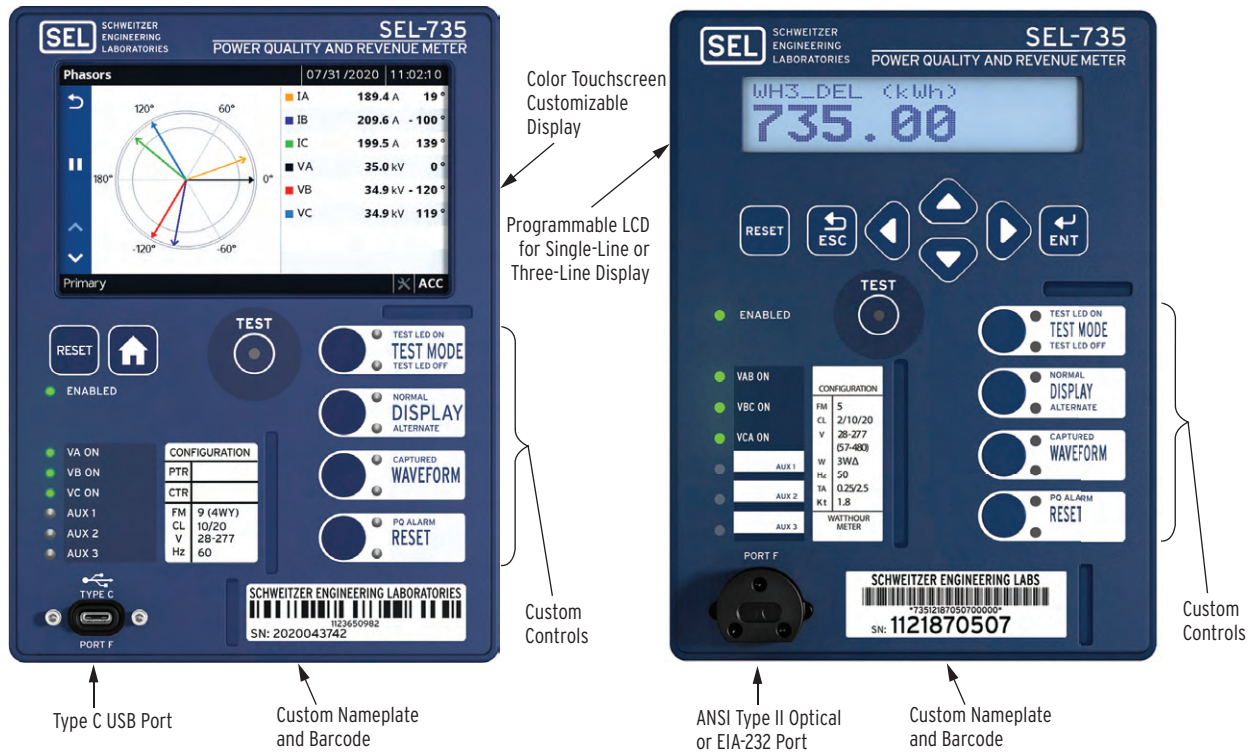
PQ and Recording	SEL-735 Basic	SEL-735 Intermediate	SEL-735 Advanced
Memory	128 MB	256 MB	1 GB
Max Harmonic Order	15th	63rd	63rd
Interharmonic Quantities	No	No	Yes
Harmonic Angles	No	No	Yes
Power Harmonics	No	No	Yes
Waveform Capture Event Reports			
Samples Per Cycle	16	16, 128	16, 128, 512
Duration (cycles)	15	15–600	15–600
Number of Events	256	33–6,200	101–10,000
COMTRADE Reports	Y	Y	Y
Wave View Oscillography	N	N	Y
Load Profile Recorder			
Recorders x channels	1 x 16	12 x 16	32 x 16
Acquisition rates	1–120 minutes	3–59 s, 1–120 minutes	3–59 s, 1–120 minutes
Storage duration for 10 minute interval data			
16 channels	10 years	20 years	20 years
192 channels	N/A	1.5 years	9.5 years
512 channels	N/A	N/A	3.5 years
Voltage Sag, Swell, Interruption (VSSI) Recorder			
Typical number of summary events	260	260	600
Number of detailed rows	60,000	60,000	130,000
Minimum disturbance duration	1/4 cycle	1/4 cycle	1/4 cycle
Sampling rate	4 samples/cycle–1 sample/day, adaptive	4 samples/cycle–1 sample/day, adaptive	4 samples/cycle–1 sample/day, adaptive
Sequential Events Recorder			
Number of events	> 80,000	> 80,000	> 80,000
Number of channels monitored	≤ 72	≤ 72	≤ 72

Table 2 SEL-735 Compliance With IEC 61000-4-30 Power Quality Standard"A" in the table refers to IEC 61000-4-30:2015 Class A compliance^a

IEC 61000-4-30 Requirement	SEL-735 Basic PQ	SEL-735 Intermediate PQ	SEL-735 Advanced PQ
General			
150/180-cycle, 10-min. aggregation	–	A	A
2-hour aggregation	–	A	A
Real-time clock uncertainty	A	A	A
Power Quality Parameters			
Power frequency	A	A	A
Magnitude of the supply voltage	A	A	A
Flicker	–	A (10 min, 2 hr updates)	A (1 min, 10 min, 2 hr updates)
Supply voltage interruptions, dips, and swells	A	A	A
Supply voltage unbalance	A	A	A
Voltage harmonics	A	A	A
Voltage interharmonics	–	–	A
Magnitude of current	A	A	A
Harmonic currents	A	A	A
Interharmonic currents	–	–	A
Current unbalance	A	A	A

^a For additional IEC 61000-4-30 testing and measurement details, see Section 5: Metering in the SEL-735 Instruction Manual.

Product Overview



Type C USB Port

Custom Nameplate and Barcode

ANSI Type II Optical or EIA-232 Port

Custom Nameplate and Barcode

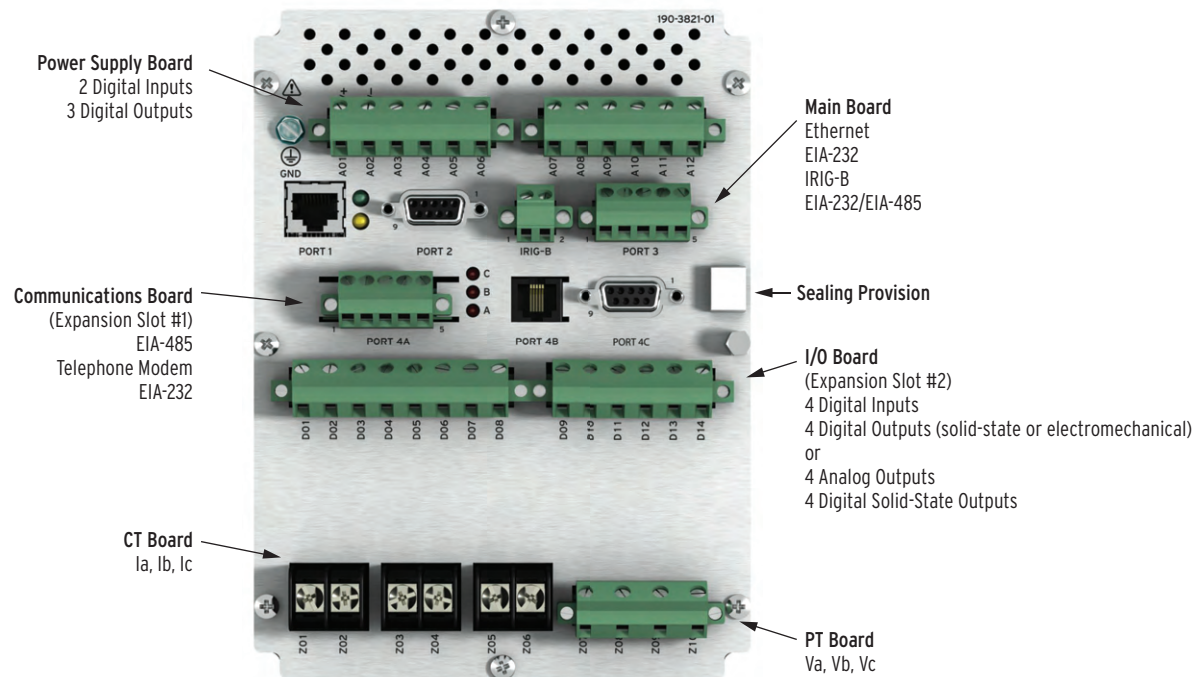
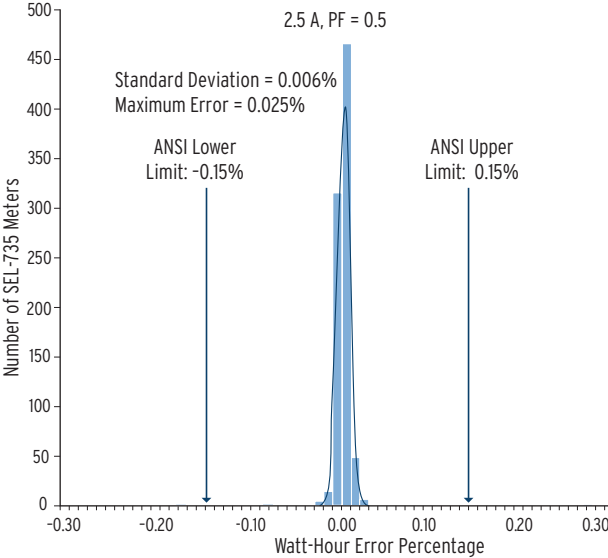


Figure 1 Product Features

Features

High-Accuracy Metering

The SEL-735 exceeds the requirements of ANSI 0.1 and IEC 0.1 S class accuracy standards over a wide current range. The meter outperforms the new non-sinusoidal requirements of ANSI C12.20 and provides high accuracy over an extended operating range and other influencing quantities, as listed in ANSI and IEC revenue metering standards. All meters ship with individual calibration certificates.



Accuracy-test results of approximately 1,000 SEL-735 Meters report a maximum error of 0.025 percent, outperforming ANSI 0.1 and IEC 0.1 S accuracy class requirements.

Figure 2 Accuracy Test

Uninterrupted Communications

Advanced communications deliver critical and historical information in real time to virtually any communications system. Simultaneously communicate with as many as ten other devices by using industry standard protocols including DNP3, synchrophasor measurements, Modbus, and IEC 61850. Improve real-time situational awareness of system conditions with IEEE C37.118.1a-2014 synchrophasors.

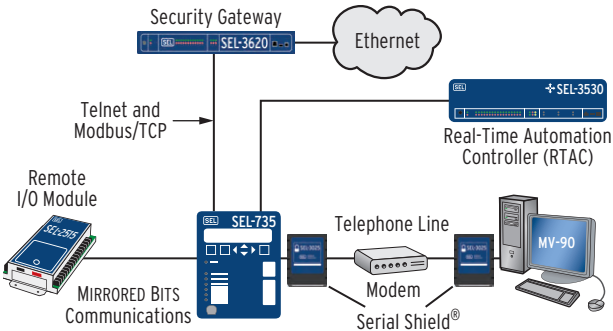


Figure 3 Integrate With Many Paths

Power Quality Monitoring^a

- Measure and record IEC 61000-4-30 Class A-compliant current, voltage, power, frequency, supply voltage interruptions, dips and swells, harmonics, interharmonics, flicker, and unbalance
- Measurement aggregation in 50/60 Hz, 3-second, 10-minute, and 120-minute intervals
- High-speed load profile recording with 3-second resolution
- Harmonic phase angles for voltage and current
- High-resolution, 512-samples/cycle waveform capture
- Total harmonic distortion (THD), crest factor, and K-factor metering with as much as 63rd harmonic content
- Voltage sag, swell, interruption
- Symmetrical components
- System unbalance
- Real-time waveforms with the Wave View oscillography functionality

Advanced On-Board Logging

Capture and log years of data with 512 logging channels, 10,000 event reports, and more than 130,000 voltage events with 1 GB of storage. Trend averages, minimums, maximums, changes, and snapshots at a rate of once every 3 seconds with independent load profile loggers.

Cyber Secure

Four password levels provide controlled access to metering data and ensure protection of critical meter configuration and data. Port security settings allow three permission levels that provide controlled read and write

^a Includes optional features. See *Table 1* and *Table 2* for details.

access to the ports. The meter verifies the authenticity and integrity of firmware files during upgrades by using a checksum and cryptographic signature.

Transformer/Line-Loss Compensation

When the contractual billing point differs from the meter location, use transformer and line-loss compensation (TLLC) to optimize the metering location and reduce the instrument transformer costs. Both compensated and uncompensated values are stored in the meter to simplify site verification.

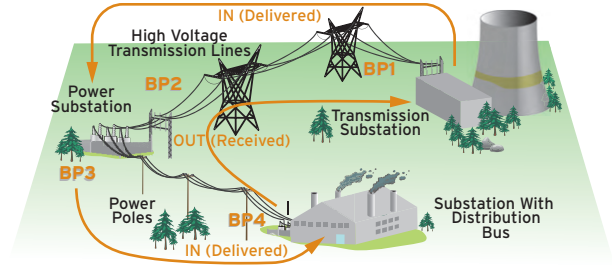


Figure 4 Choose From Four Billing and Metering Points With TLLC

Software-Configurable Meter Form

Internal connections of meter elements (CT and PT pair) can be changed in the field depending on the type of service. The FORM terminal command configures the meter as Form 5, 9, or 36.

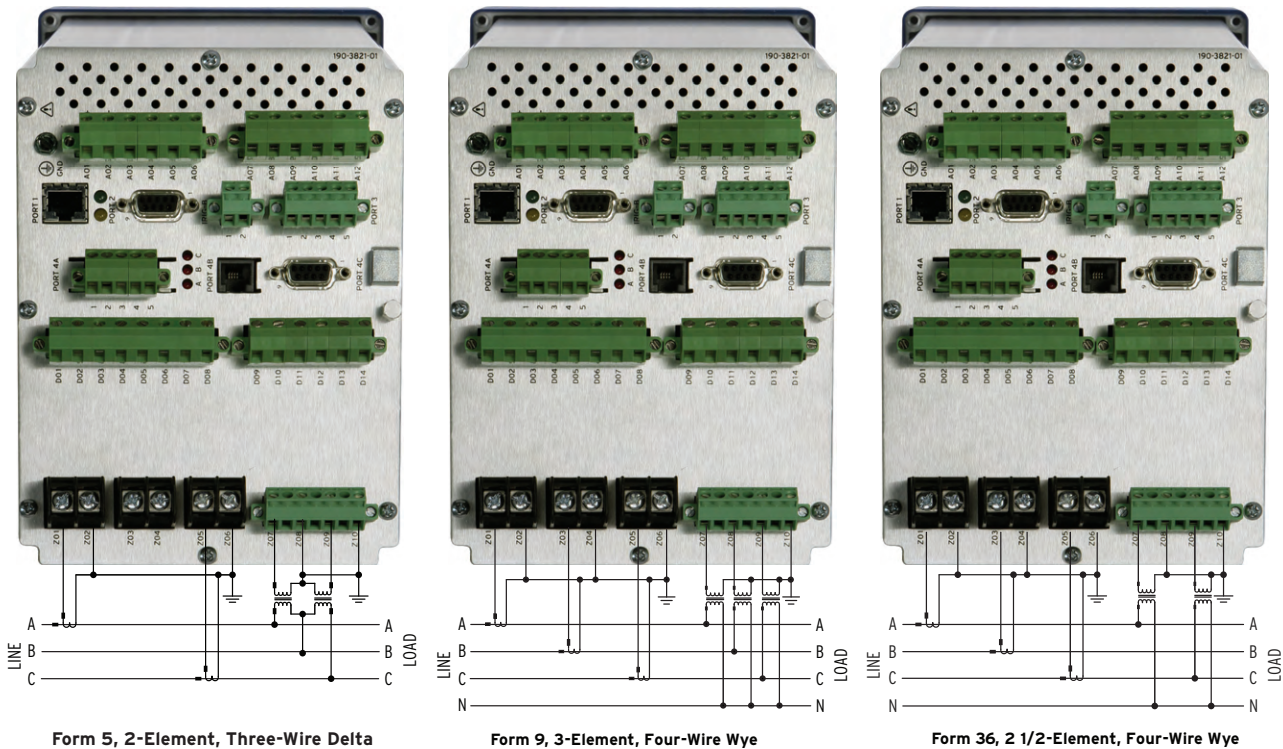


Figure 5 Software-Configurable Metering Form

Touchscreen Features

A real-time display on an 800 x 480 color touchscreen display provides visual indication of power quality and waveform signatures by using a menu-based interface.

Real-Time Oscilloscope

Waveform displays voltage and current waveforms in real time, creating oscilloscope-like functionality.

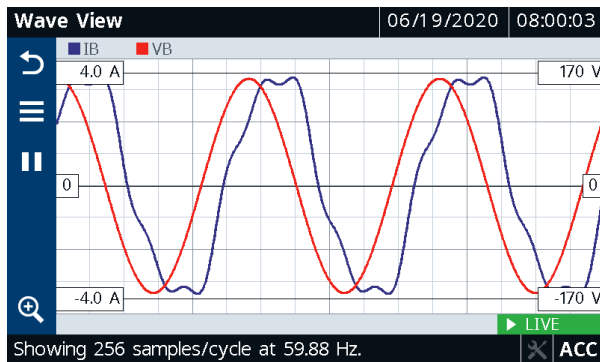


Figure 6 Waveform Display

Phasor Display

Easily access metering phasors for commissioning, troubleshooting, and power system monitoring with real-time phasors. The color display is specially designed to support color-blindness.

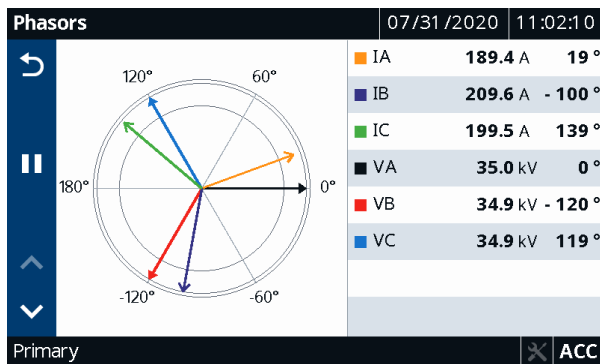


Figure 7 Phasor Display

Test Mode

Simplify accuracy testing with visualization of infrared test pulses, accumulated energy, and instantaneous signals. When in Test Mode, the SEL-735 freezes billing quantities to isolate test input from revenue billing.

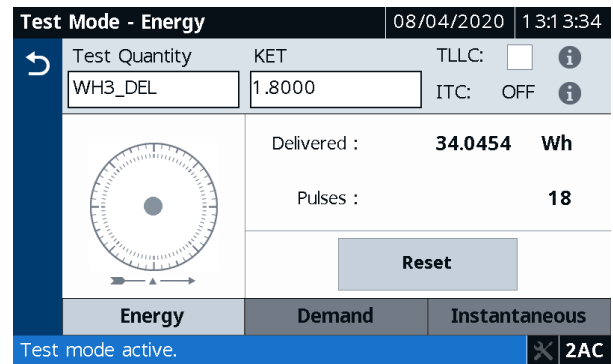


Figure 8 Test Mode Display

Four-Quadrant Metering

The SEL-735 supports four-quadrant metering to monitor power and energy accumulation in each quadrant for bidirectional metering.

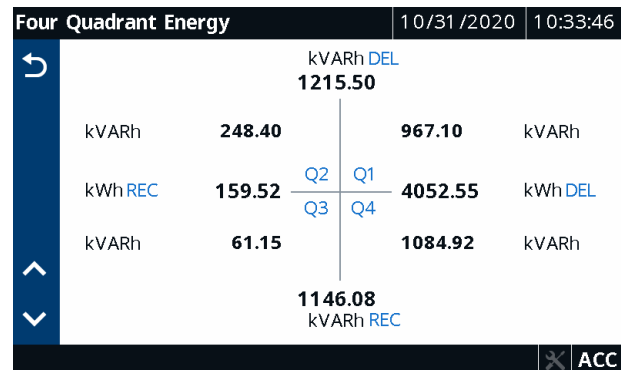


Figure 9 Four-Quadrant Metering

Large Three-Line Display

Customizable screens with useful defaults and large fonts allow continuous monitoring from a distance.

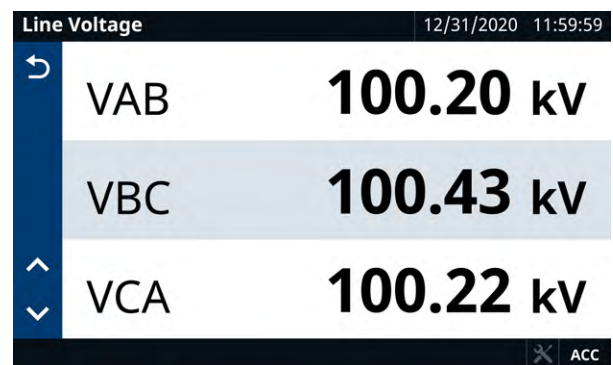


Figure 10 Three-Line Display

Predictive Demand

The predictive demand function monitors accumulated demand and alarms when the demand exceeds a user-defined limit. The SEL-735 can then shut down loads or peak-shave with generation to avoid demand charges, as shown in *Figure 11*. The predictive demand alarm is available through IEC 61850, Modbus, DNP3, MIRRORRED BITS communications, or the front-panel LEDs.

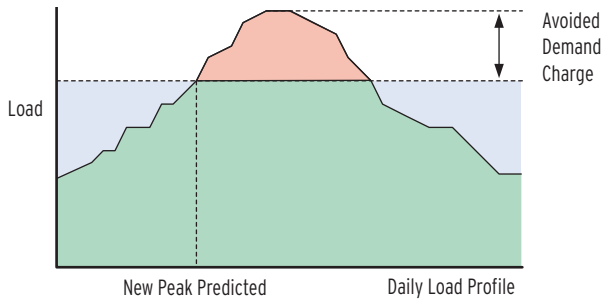


Figure 11 Reduce Peak Demand Charges With the Predictive Demand Alarm

Programmable Logic (SELogic Control Equations)

The meter provides user-programmable logic to combine meter calculations, contact inputs, remote command inputs, and timers to control internal logic and contact outputs. The logic allows the following operations:

- Logic (OR, AND, NOT)
- Math (+, -, x, /)
- Analog compare (>, <, <>, =, >=, <=)
- Triggers (RISING EDGE, FALLING EDGE)
- Sixteen latches
- Sixteen remote-control logic units
- Sixteen programmable logic variables with pickup and dropout timers
- Sixteen programmable analog variables

Time of Use

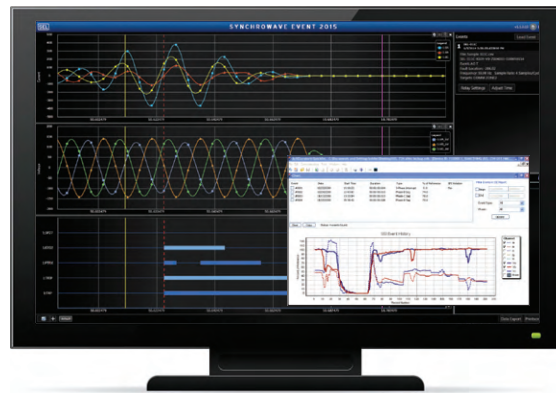
Record demand and energy consumption with a user-defined calendar; use time-of-use metering to bill consumption at different rates based on season, day type, and time of day. The program automatically self-reads and resets demand; there is no need to manually reset meters.

Software Features

Monitor the state of the power system by using no-cost ACCELERATOR QuickSet[®] SEL-5030 Software.

Waveform Capture and Analysis

Quickly analyze event records, status bits, spectral analysis, and harmonic content by using QuickSet. Convert event reports to oscillography with time-coordinated Device Word bit assertion and phasor/sequence element diagrams.



View event records and waveform captures of system anomalies.

VSSI reports detail system interruptions with 1 ms resolution.

Figure 12 Event Reports and Analysis

Trend Log Monitoring

Independent load profile recorders in the SEL-735 allow simultaneous meter and power quality logging of as many as 512 data channels. Trend averages, minimums, maximums, changes, and snapshots are recorded at a rate of once every 3 seconds. All possible configurations are shown in *Table 1*.

QuickSet offers a fast and simple method to retrieve, plot, and export load profile data to .hhf or .csv formats. Itron MV-90 meter reading software communicates to any SEL-735 communications port and automates meter reads for large-scale metering installations

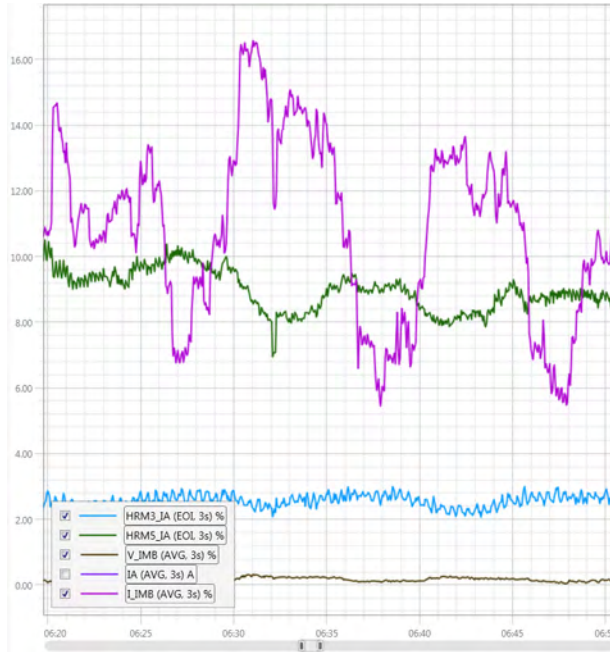


Figure 13 Trend Log

VSSI Monitoring

Correlate system disturbances with the VSSI recorder. The SEL-735 stores and reports residual voltage, duration, affected phases, CBEMA/ITIC reports, and time stamp of occurrence.

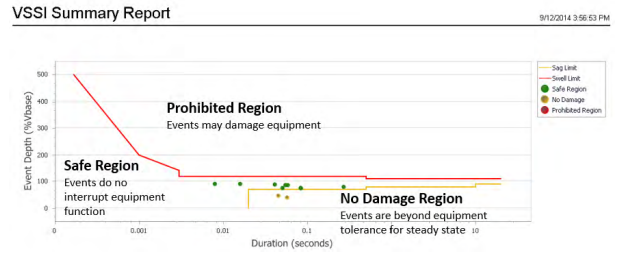


Figure 14 VSSI Summary Report

Flicker and Harmonics Monitoring

Monitor, record, and control using individual harmonic values, THD, and K-factor with resolution as high as the 63rd harmonic. Measure, record, and control using Group THD. Measure interharmonics from 1 Hz to 3800 Hz in 1 Hz sampling bins. Retrieve interharmonics with 1 Hz resolution through the Wave View functionality, available only on the Advance PQ option SEL-735 Meters.

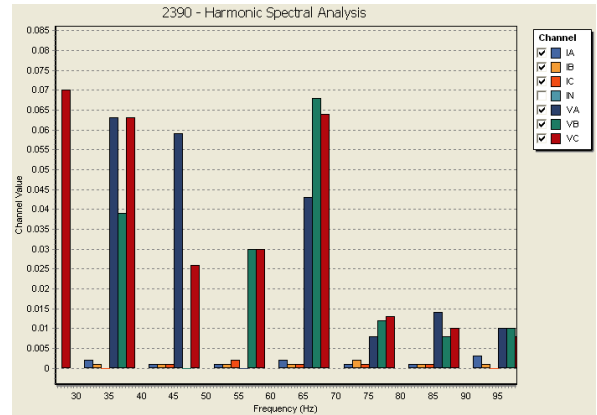


Figure 15 Harmonic Spectral Analysis

Application Examples

The SEL-735 accurately reports bidirectional energy even in the presence of harmonics and distorted waveforms. When tested with peaked waveform distortion, the SEL-735 reports with a typical error of just 0.006 percent.

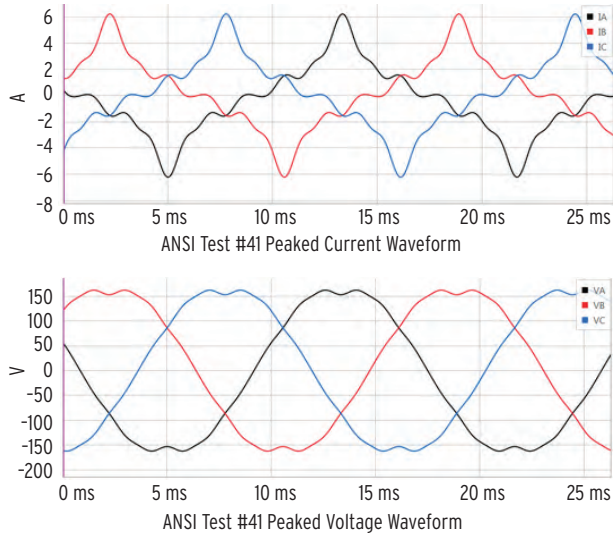


Figure 16 Current and Voltage Waveforms

Table 3 SEL-735 Performance With Peaked Waveform Distortion

Voltage Waveform	Current Waveform	0.1 Accuracy Class Reference Performance (%)	SEL-735 Measured Error (%)
Sinusoidal	Sinusoidal	±0.05	0.003
Sinusoidal	Peaked Current Waveform	±0.2	0.006
Peaked Voltage Waveform	Peaked Current Waveform	±0.3	0.006

Power Quality Monitoring and Troubleshooting

Use programmable triggers, such as voltage interruptions, to record as many as 10,000 oscillography events. The VSSI recorder time-stamps voltage excursions with as much as 4 ms resolution and records indefinitely by using an adaptive sampling rate. Settings include trigger thresholds and hysteresis as a percentage of the nominal value and an automatic recording duration dependent on the length of the voltage excursion.

Distributed Generation Control

Provide automatic start and remote control to distributed generation facilities. SELOGIC control equations support any logical or mathematical combination of measured quantities and set points to control a generator or load switch.

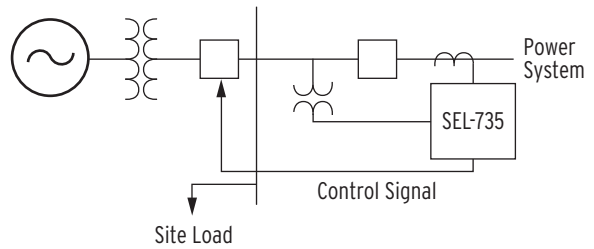


Figure 17 Distributed Generation Control

Optimize Energy and Resources

Combine SEL meters with pulse-type or DNP3-enabled devices to monitor consumption of other resources, such as water, air, gas, and steam (WAGES). The SEL-735 includes as many as six pulse inputs. Data loggers provide as much as 20 years of storage with 512 channels to assist with tracking efficiency measures, unused resources, and performance efficiency such as kWh per cubic meters of water pumped. Use ACCELERATOR[®] Meter Reports SEL-5630 Software to analyze data, predict system trends, and make planning decisions.

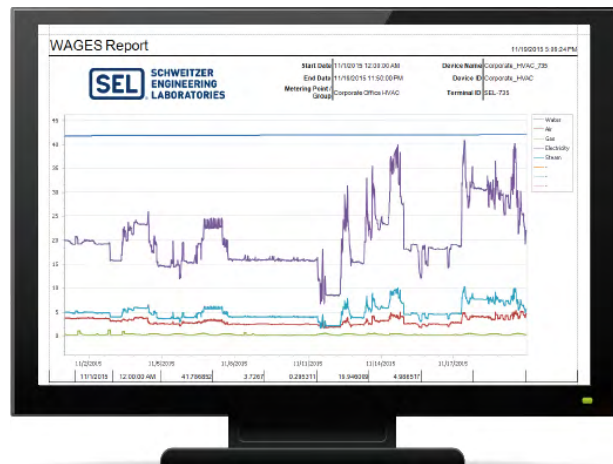


Figure 18 WAGES Report

Retrofit Applications

Outdoor Enclosure

- Replace socket meters with a low-cost enclosure and prewired FT-1 test switch.
- Quickly install the meter with the support of thoughtful design details, such as DIN rails for accessories; a lockable, stainless steel latching system; wall-mount brackets; prewiring from the meter to the test switch; and wire clamps. The fully sealed enclosure complies with NEMA 4X, IEC 529, and IP66 protection requirements.



Figure 19 Outdoor Enclosure Mounting

Easily Extractable Meter (EXM)

- Extractable in less than one minute.
- Safer than draw-out and socket meters.
- Self-shorting CT connector.
- Clearly marked wires.
- Easier to install and half the cost of a draw-out meter.
- Simplified field testing with integrated connectors.
- Simple retrofit brackets replace draw-out meters.



Figure 20 EXM Option Instructions

Mounting Options and Accessories

Refer to the Metering Accessory Catalog, available at selinc.com/products/73x/meter-options/, for more information on brackets, retrofit bezels, cover plates, and other accessories.



Figure 21 Mounting Options and Accessories

Portable Power Quality Meter

Monitor power quality anywhere with the rugged SEL-735 Portable Power Quality Meter. You can pinpoint power quality problems and energy consumption on subcircuits with clamp-on CTs and clip-on voltage leads. In addition, the portable meter lets you log years' worth of data with 1 GB of onboard memory.

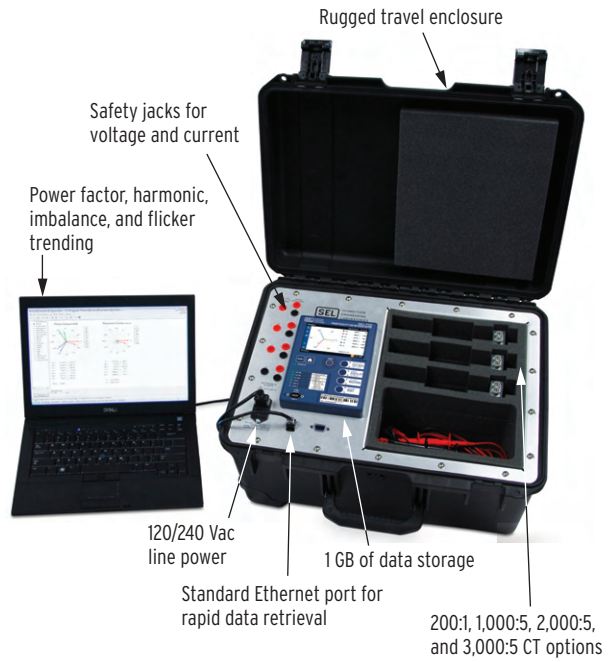


Figure 22 Portable Power Quality Meter

Diagrams and Dimensions

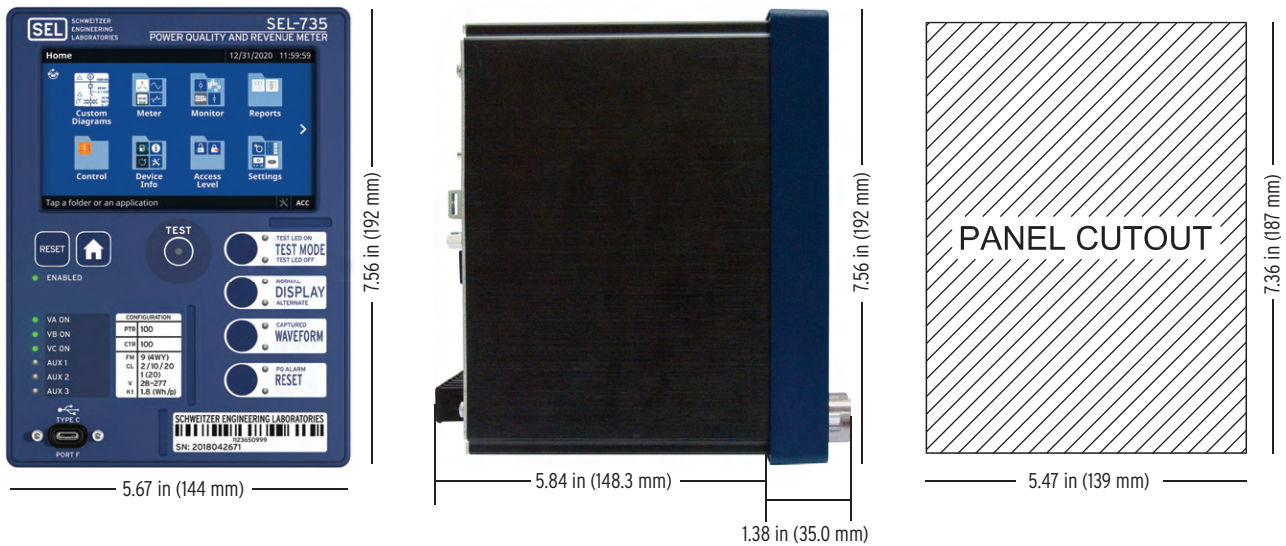


Figure 23 SEL-735 Vertical Dimensions



Figure 24 SEL-735 Horizontal Dimensions

Specifications

⚠ CAUTION

Observe ratings prior to commissioning.

Compliance

American National Standards Institute (ANSI)	ANSI C12.1-2014 for Electric Meters, Code for Electricity Metering and ANSI C12.20-2015 for Electricity Meters—0.1, 0.2, and 0.5 Accuracy Classes verified compliant by an accredited third-party test laboratory
Australian National Measurement Institute	NMI M6-1 Electricity Meters: Part 1: Metrological and Technical Requirements verified by an accredited third-party test laboratory
Australia and New Zealand	RCM Mark
California ISO (CAISO)	CAISO Compliant (applies to Blondel-compliant Form 5 and Form 9 only)
Canada	ICES-001(A) / NMB-001(A)
Comisión Federal de Electricidad (CFE)	G0000-48-2010 verified compliant by Laboratorio de Pruebas de Equipos y Materiales (LAPEM)
Electric Reliability Council of Texas (ERCOT)	ERCOT Compliant (applies to Blondel-compliant Form 5 and Form 9 only)
European Union (EU)	CE: Mark—EMC Directive (2014/30/EU), Low Voltage Directive (2014/35/EU)
Federal Institute of Metrology (METAS)	Certified to IEC 61000-4-30 Ed. 3.0 (2015) Class A, Testing according to IEC 62586-2 Ed. 2.0 (2017). Certified to IEC 62052-11:2020, IEC 62053-22:2020, IEC 62053-24:2020, AS 62052.11:2018, AS 62053.22:2018, and AS 62052.31:2017.
International Electrotechnical Commission	IEC 62052-11:2020, Electricity metering equipment (AC) - General requirements, tests and test conditions
ISO 9001	Designed and manufactured under an ISO 9001 certified quality management system
New York	New York State Department of Public Service Commission (applies to Blondel-compliant Form 5 and Form 9 only)

Underwriter's Laboratories, Inc. (Normal Locations)

UL Listed to U.S. and Canadian safety standards (File E220228, FTRZ, FTRZ7, NRAQ, NRAQ7, PICQ, PICQ7)

Underwriter's Laboratories, Inc. (Hazardous Locations)

ANSI/ISA 12.12.01-2015 and CSA C22.2 No. 213-15 Class I Division 2 Hazardous Locations (File E475839, NRAQ, NRAQ7).

United Kingdom

UKCA Mark

General

AC Voltage Inputs

Measurement Category:	III
Maximum Rating:	300 V _{L-N} , 520 V _{L-L} continuous 600 V _{L-N} , 1039 V _{L-L} for 10 seconds

PT input has only been evaluated for a maximum of 300 V_{L-N} Vac input rating by UL.

Range:

Revenue:	28–300 V _{L-N} , 48–520 V _{L-L}
Measurement:	11–300 V _{L-N} , 19–520 V _{L-L}

Burden:

10 MΩ

AC Current Inputs

Measurement Category:	III
Maximum Rating:	20 A continuous, per UL 61010 500 A for 1 second (thermal) 100 A for 25 seconds (thermal)

Range

Current Class CL2/CL10/CL20, optimized for low-end accuracy

Revenue: 0.010–22 A

Measurement: 0.001–22 A continuous

Current Class CL10/CL20, optimized for 100 A fault recording

Revenue: 0.050–22 A

Measurement: 0.005–22 A continuous

22–100 A symmetrical (with saturation)

Burden:

≤0.5 VA

Frequency and Rotation

60 or 50 Hz system frequency specified at time of order. User-selectable ABC/ACB phase rotation.

Frequency tracking range: 40 to 70 Hz based on V_A or V_C.

Power Supply

UL Ratings

120/240 Vac:	50/60 Hz, 60 VA
125/250 Vdc:	25 W
24/48 Vdc:	22 W
12/24 Vdc:	22 W

Typical Power Consumption

< 20 VA/7 W typical
< 30 VA/9 W typical (color touchscreen model)

Startup Time to Begin

Energy Metering: < 5 seconds

Continuous Operating Limits

110–240 Vac/Vdc:	85–264 Vac (50/60 Hz) 85–275 Vdc
24/48 Vdc:	19–58 Vdc
12/24 Vdc:	9.6–30 Vdc

Interruption (IEC 60255-11:1979):	50 ms at 125 Vac/Vdc 50 ms at 48 Vdc 10 ms at 24 Vdc 2 ms at 12 Vdc
--------------------------------------	--

Ripple

(IEC 60255-11:1979): 12% for dc inputs

Terminal Voltage Dropout: <40 V within 1 minute of power removal

Rated Insulation Voltage

(IEC 60664-1:2020): 300 Vac

100BASE-FX Fast Ethernet Fiber-Optic Port

Fiber Type:	Multimode
Data Rate:	100 Mbps
Wavelength:	1300 nm
Optical Connector Type:	LC
Link Budget:	11.8 dB
Fiber Size:	62.5/125 μ m or 50/125 μ m
Approximate Range:	2 km
TX Power (Max):	-14 dBm average
TX Power (Min):	-20 dBm average (62/125)
TX Power (Min):	-23.5 dBm average (50/125)
RX Sensitivity:	-31 dBm average
RX Power Input (Max):	-14 dBm average

Communications Protocols

SEL ASCII/Compressed ASCII, SEL Fast Operate/Fast Meter, MIRRORING BITS, SEL Distributed Port Switch (LMD), Modbus RTU/TCP, DNP3 serial and LAN/WAN, FTP, TCP/IP, Y-Modem, SNTIP, IEC 61850, Telnet, MV-90, and IEEE C37.118-2014 (Synchrophasor measurements)

Output Contacts

Ratings determined by IEC 60255-23:1994

Standard (Electromechanical)

250 Vac, 30 Vdc, 3 A resistive

Make: 30 A per IEEE C37.90-1989
3.6 kVA, Cos ϕ = 0.3

Break Rating: 360 VA, Cos ϕ = 0.3

Breaking Capacity (10000 Operations):

12/24 Vdc	0.75 A	L/R = 40 ms
48 Vdc	0.50 A	L/R = 40 ms
125 Vdc	0.30 A	L/R = 40 ms
250 Vdc	0.20 A	L/R = 40 ms

Carry: 3 A at 120 Vac, 50/60 Hz
1.5 A at 240 Vac, 50/60 Hz
50 A for 1 second

Durability: >10,000 cycles at rated conditions

Pickup/Dropout Time: <16 ms

Maximum Operating Voltage (Ue): 250 V

Current (Ie): 3 A

Rated Insulation Voltage (Ui) (Excluding EN 61010): 300 V

Optional (Solid State)

Voltage: 250 Vdc/Vac

Current: 100 mA maximum

Capacity: 0.6 VA at 25°C, 0.2 VA at 85°C

Pulse Rate: 20 pulses per second

Maximum On Resistance: Typical: 50 Ω
Guaranteed: <100 Ω

Minimum Off Resistance: 10 M Ω

Pickup/Dropout Time: <25 ms

Analog Outputs

Maximum Firmware Update Rate: 100 ms

Maximum Settling Time for Full Range Change to 0.1% Full Scale: 500 ms

Bandwidth: 0 to 4 Hz

 \pm 1 mA Output

Range: \pm 1.2 mA

Minimum Output Impedance: 100 M Ω

Maximum Load: 10 k Ω , 100 μ H

Accuracy: \pm 0.15% \pm 2.0 μ A at 25°C

4–20 mA Output

Range: \pm 24 mA

Minimum Output Impedance: 100 M Ω

Maximum Load: 500 Ω , 100 μ H

Accuracy: \pm 0.20% \pm 10 μ A at 25°C

Optoisolated Input Ratings (Digital Input Ratings)

DC Control Signal 250 Vac/Vdc (Signal Level)

250 Vdc: Pickup 200–275 Vdc
Dropout 150 Vdc

220 Vdc: Pickup 176–242 Vdc
Dropout 132 Vdc

125 Vdc: Pickup 100–137.5 Vdc
Dropout 75 Vdc

110 Vdc: Pickup 88–121 Vdc
Dropout 66 Vdc

48 Vdc: Pickup 38.4–52.8 Vdc
Dropout 28.8 Vdc

24 Vdc: Pickup 15–30 Vdc
Dropout <5 Vdc

12 Vdc: Pickup 9.6–16.7 Vdc
Dropout <6 Vdc

AC Control Signal

250 Vac: Pickup 170.6–300 Vac
Dropout 106 Vac

220 Vac: Pickup 150.3–264 Vac
Dropout 93.2 Vac

125 Vac: Pickup 85–150 Vac
Dropout 53 Vac

110 Vac:	Pickup 75.1–132 Vac Dropout 46.6 Vac
48 Vac:	Pickup 32.8–57.6 Vac Dropout 20.3 Vac
24 Vac:	Pickup 14–27 Vac Dropout <5 Vac

Current Draw at
Nominal DC Voltage: 2–6 mA

Time-Code Input

Meter accepts demodulated IRIG-B time-code input at EIA-232 Port 3, Port 2, or dedicated IRIG-B port (2-pin Phoenix connector).

IRIG Port Electrical Characteristics

Nominal Voltage:	5 Vdc
Maximum Voltage:	8 Vdc
Input Resistance:	>2 k Ω

Dedicated IRIG Port:

On (1) State:	V _{ih} \geq 3.5 V
Off (0) State:	V _{il} \leq 1.5 V

IRIG Pins on Port 2 and Port 3

On (1) State:	V _{ih} \geq 2.0 V
Off (0) State:	V _{il} \leq 0.8 V

Time Accuracy

Clock Drift With No
Time Input: 4 minutes per year, typical

IRIG Accuracy: \pm 2 μ s

Simple Network Time Protocol (SNTP) Accuracy

Multicast or Unicast: \pm 5 ms (when directly connected to SNTP server)

Broadcast: No specified accuracy

Operating Temperature

IEC 60068-2-1&2:1993: -40° to $+85^{\circ}$ C (-40° to $+185^{\circ}$ F)

Note: Not applicable to UL applications.

LCD/Color Touchscreen

Operating Temperature: -20° to $+70^{\circ}$ C (-4° to $+158^{\circ}$ F)

Dimensions: 3.86" x 0.902"

Operating Environment

Insulation/ Protective
Class: 1

Pollution Degree: 2

Overvoltage Category: CAT III: Color touchscreen model
Power supply input, output contact, and digital input voltages must all be HLV or must all be SELV (no mixing of HLV and SELV).
No option cards installed.
CAT II: All other vertical and horizontal configurations.
SELV = non-hazardous low voltage.
HLV = hazardous voltage, >60 Vdc, >30 Vac (specified for dry environments)

Indoor Use (Atmospheric Pressure: 80–110 kPa)

Maximum Humidity: 95% RH non-condensing

Maximum Altitude:

Altitude	Working Voltage
0–2000 M	300 Vac
2000–4000 M	150 Vac

Weight

2.3 kg (5.0 lb)

Dimensions

Refer to *Figure 2.1* and *Figure 2.2* for meter dimensions.

Terminal Connections

Rear Screw-Terminal Tightening Torque

Current Input Terminal Block (Ring Terminals Are Recommended)

Minimum:	0.9 Nm (8 in-lb)
Maximum:	1.4 Nm (12 in-lb)

Connectorized[®]

Minimum:	0.5 Nm (4.4 in-lb)
Maximum:	1.0 Nm (8.8 in-lb)

Compression Plug Mounting Ear

Minimum:	0.18 Nm (1.6 in-lb)
Maximum:	0.25 Nm (2.2 in-lb)

Connectorized terminals accept wire size 12–24 AWG.

User terminals or stranded copper wire should be at a minimum temperature rating of 105°C (221°F).

Synchrophasor Measurements

Compliance: P Class Synchrophasor data compliant with IEEE C37.118.1-2011 as amended by IEEE C37.118.1a-2014.

Data Transfer: IEEE C37.118.2-2011 (Backward compatible with IEEE C37.118-2005)

Message Rates: 60 Hz: 1, 2, 4, 5, 10, 12, 15, 20, 30, 60 messages per second
50 Hz: 1, 2, 5, 10, 25, 50 messages per second

Measurement Category

Nominal Voltage:

120 V when VBASE < 180

240 V when 180 < VBASE < 250

250 V when VBASE \geq 250

Voltage Range:

80%–120% of Nominal Voltage

Nominal Current:

ANSI CL2/20 and IEC 1 A/2 A/5 A nominal configurations.

(1 A, 2 A, and 5 A are the preferred nominal current ratings for transformer-connected IEC meters in IEC 62052-11.)

Processing Specifications

AC Voltage and Current Inputs

512 samples per power system cycle.

Control Processing

1/2-cycle processing interval

SELOGIC Pickup and Accuracies

SELOGIC Timers: \pm 1/2 cycle

Analog Values: \pm 3%

Metering/Monitoring

Voltage, Current, and Power Accuracy

Unity Power Factor: \pm 0.06%

0.5 Power Factor: \pm 0.16%

Energy Accuracy (Form 5 and Form 9 Only)

Unity Power Factor: \pm 0.06% guaranteed
 \pm 0.02% typical

0.5 Power Factor: \pm 0.16% guaranteed
 \pm 0.06% typical

ANSI C12.20-2015 Accuracy Class 0.1
 IEC 62053-22 Accuracy Class 0.1 S
 IEC 62053-24 Accuracy Class 0.5 S
 IEEE 519 PQ Compliance with pre-programmed settings

Frequency Accuracy

FREQ_PQ: ±0.001 Hz
 FREQ: ±0.01 Hz

Power Quality

IEC 61000-4-30:2015 Class A

Flicker

PST: ±5% over the range 0.5–25 P_{ST}
 (10-min interval)
 PLT: ±5% over the range 0.5–25 P_{LT}
 (2-hour interval)

Type Tests

Electromagnetic Compatibility Immunity

Product Standards: ANSI C12.20-2015
 IEC 62052-11:2020
 IEC 60255-26:2013
 IEC 61000-6-2:2005 +AC:2005
 IEC 61000-6-4:2006 +A1:2010
 IEEE C37.90-2005

Conducted Radio Frequency Immunity: IEC 61000-4-6,
 150 kHz to 80 MHz, 1 kHz 80% AM
 10 Vrms
 Spot Frequencies: 27 MHz and
 68 MHz

Damped Oscillatory Wave Immunity: ANSI C12.1
 IEC 61000-4-18
 IEEE C37.90.1

Current: ±2.5 kV common
 Voltage: ±2.5 kV common,
 ±2.5 kV differential
 Power: ±2.5 kV common,
 ±2.5 kV differential
 Input: ±2.5 kV common,
 ±2.5 kV differential
 Output: ±2.5 kV common,
 ±2.5 kV differential
 Communication: ±2.5 kV common
 Signal: ±2.5 kV common

Electrical Fast Transient Burst: ANSI C12.1
 IEC 61000-4-4
 IEEE C37.90.1

Power, Input/Output, Voltage/Current Circuits: ±4 kV @ 5 kHz
 Communication: ±2 kV @ 5 kHz

Electrostatic Discharge: ANSI C12.1
 IEC 61000-4-2
 IEEE C37.90.3
 Contact Discharge: ±8 kV
 Air Discharge: ±15 kV

Emissions: ANSI C63.4
 CISPR 11/22/32
 EN 55011/22/32
 Class A or B (configuration-dependent)
 Canada ICES-001(A) / NMB-001(A)

Power Frequency Magnetic Field Immunity: ANSI C12.1
 ANSI C12.20
 IEC 61000-4-8
 100 A/m for 60 seconds
 1000 A/m for 3 seconds
 Maximum deviation as specified in
 ANSI C12.20

Radiated RF Immunity: ANSI C12.1
 IEC 61000-4-3
 IEEE C37.90.2

Frequency (MHz)	Field Strength	Modulation
0.2–80	15 V/m	AM 90% 1 kHz sine
80–2000	20 V/m	AM 80% 1 kHz sine AM 90% 1 kHz sine
80–2000	30 V/m	Continuous wave
2000–10000	15 V/m	Continuous wave
80–2000	20 V/m	Keyed 0.5 s on 0.5 s off
80/160/380/450/900/ 1850/1890/2150/2600/ 3500/3800/5000	20 V/m	AM 80% 1 kHz sine
900/1732/1800/1890/ 2310/2450/5800	20 V/m	Pulse Mod. 50%

Ring Wave (100 kHz): ANSI C12.1
 IEC 61000-4-12
 IEEE C62.41.2
 (Location Category B, Table 2)
 Power, Voltage/Current Circuits:
 ±6 kV (12 Ω) LL
 ±6 kV (12 Ω) LE
 ±4 kV with barrier-style Euro plugs
 installed

Startup and Shutdown: IEC 60255-26
 60 s ramp/5 min power off

Surge Immunity: ANSI C12.1
 IEC 61000-4-5
 IEEE C62.41.2
 (Location Category B, Table 3)

Power, Voltage/Current Circuits: ±6 kV (2 Ω) LL
 ±6 kV (2 Ω) LE
 ±4 kV with barrier-style Euro plugs
 installed

Ethernet: ±6 kV
 EIA-232, EIA-485,
 IRIG-B: ±2 kV
 Input/Output: ±2 kV LL
 ±4 kV LE

Environmental

Product Standards: ANSI C12.20-2015
 IEC 62052-11:2020
 IEC 60255-27:2014

Environmental: ANSI C12.1
 IEC 60068-2-1
 IEC 60068-2-2
 IEC 60068-2-30
 –40° to +85°C
 5% to 95% relative humidity (37°C
 dew point)

Object Penetration: IEC 60529

Enclosed in Panel With Available Gasket (P/N: 915900097) (Monochrome Model): IP65

Enclosed in Panel With Available Gasket (P/N 915900097) and Cover for Front USB-C Port (Touchscreen Models):	IP54
Without Gasket:	IP41
Back (Terminals):	IP20
Seismic:	IEC 60255-21-3 Class 2 Quake Response
Shock/Bump:	ANSI C12.1 IEC 60068-2-27 IEC 60255-21-2 Class 1 Shock Withstand Class 2 Shock Response Class 1 Bump
Vibration:	ANSI C12.1 IEC 60068-2-6 IEC 60255-21-1 Class 2 Endurance Class 2 Response

Accuracy

ANSI C12.20-2015	Accuracy Class 0.1; CL2/10/20, and CL10/20 (applies to Blondel-compliant Form 5 and Form 9 only)
IEC 62053-22:2020	Class 0.1 S
IEC 62053-24:2020	Class 0.5 S
IEC 61000-4-30:2015	Class A
IEC 62586-2:2017	

Safety

Product Standards:	ANSI/ISA 12.12.01-2015 and CSA C22.2 No. 213-15 Class I Division 2 Hazardous Locations CAN/CSA-C22.2 No. 61010-1-12:2018 IEC/UL 61010-1:2010 IEC/UL 61010-2-030:2010 (300 V, Measurement Category III) IEC/UL 61010-2-201:2013 IEC 62052-11:2020 IEC 60255-27:2014 IEEE C37.90-2005
Dielectric Strength/ Impulse:	IEC 61010-1 IEC 62052-11 IEC 60255-27 IEC 60664-1 IEEE C37.90

Routine Dielectric Test Levels

Current Inputs:	2.2 kVdc
Voltage Inputs:	2.2 kVac
Inputs and Outputs:	2.2 kVac
Analog Outputs:	3.11 kVdc
Power Supply:	3.11 kVdc
EIA-485 Port:	1.50 kVdc
Insulation Resistance:	IEC 61010-1 IEC 60255-27 Meets applicable levels
Flammability of Insulating Materials:	IEC 61010-1 IEC 62052-11 IEC 60255-27 Meets applicable levels
Max Temperature of Parts and Materials:	IEC 61010-1 IEC 62052-11 IEC 60255-27 Meets applicable levels, normal use
Protective Bonding/ Continuity:	IEC 61010-1 IEC 60255-27 Meets applicable levels

Technical Support

We appreciate your interest in SEL products and services. If you have questions or comments, please contact us at:

Schweitzer Engineering Laboratories, Inc.
2350 NE Hopkins Court
Pullman, WA 99163-5603 U.S.A.
Tel: +1.509.338.3838
Fax: +1.509.332.7990
Internet: selinc.com/support
Email: info@selinc.com

Notes

© 2011-2024 by Schweitzer Engineering Laboratories, Inc. All rights reserved.

All brand or product names appearing in this document are the trademark or registered trademark of their respective holders. No SEL trademarks may be used without written permission. SEL products appearing in this document may be covered by U.S. and Foreign patents.

Schweitzer Engineering Laboratories, Inc. reserves all rights and benefits afforded under federal and international copyright and patent laws in its products, including without limitation software, firmware, and documentation.

The information in this document is provided for informational use only and is subject to change without notice. Schweitzer Engineering Laboratories, Inc. has approved only the English language document.

This product is covered by the standard SEL 10-year warranty. For warranty details, visit selinc.com or contact your customer service representative.

SCHWEITZER ENGINEERING LABORATORIES, INC.

2350 NE Hopkins Court • Pullman, WA 99163-5603 U.S.A.

Tel: +1.509.332.1890 • Fax: +1.509.332.7990

selinc.com • info@selinc.com

