



# FLISR Response Report

Permanent Fault detected on FLISR Feeder 1 at 2022-04-29 | 5:43:37.201 PM

## Summary

**Feeder:** FLISR Feeder 1

**Event Type:** Fault

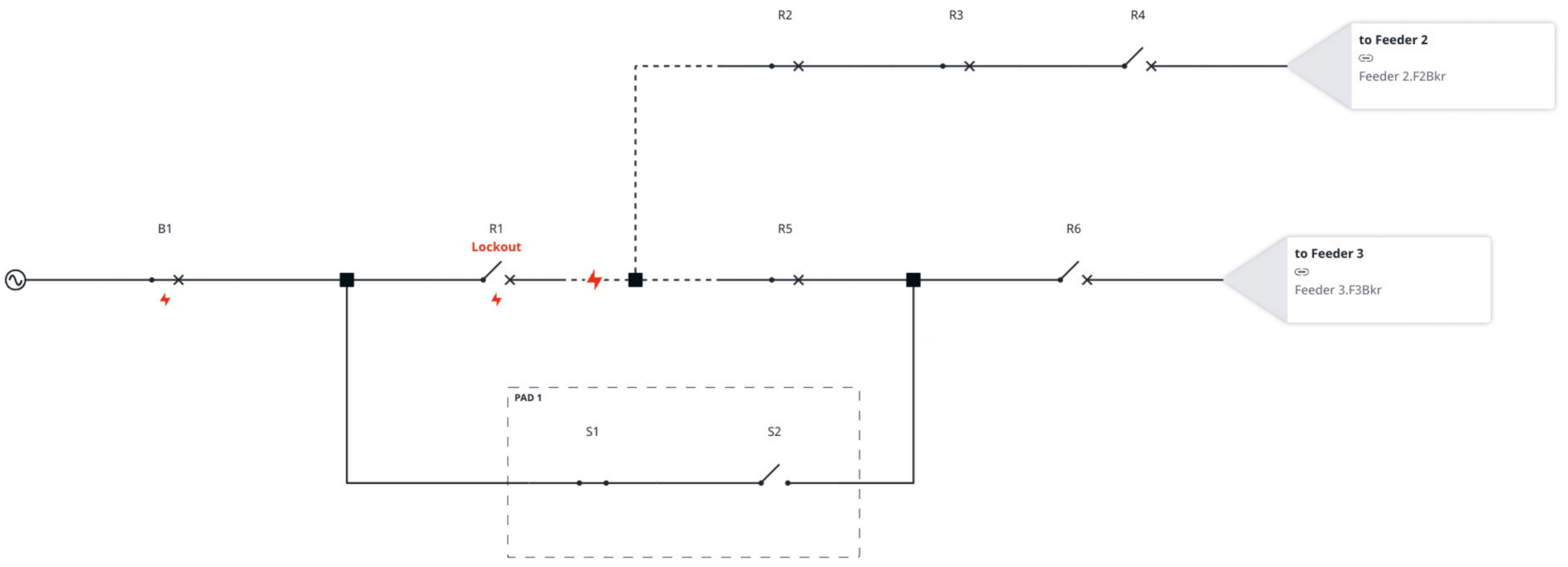
**Event Start:** 2022-04-29 | 5:43:37.201 PM

**Lockout Time (From Device):** 2022-04-29 | 5:43:37.091 PM

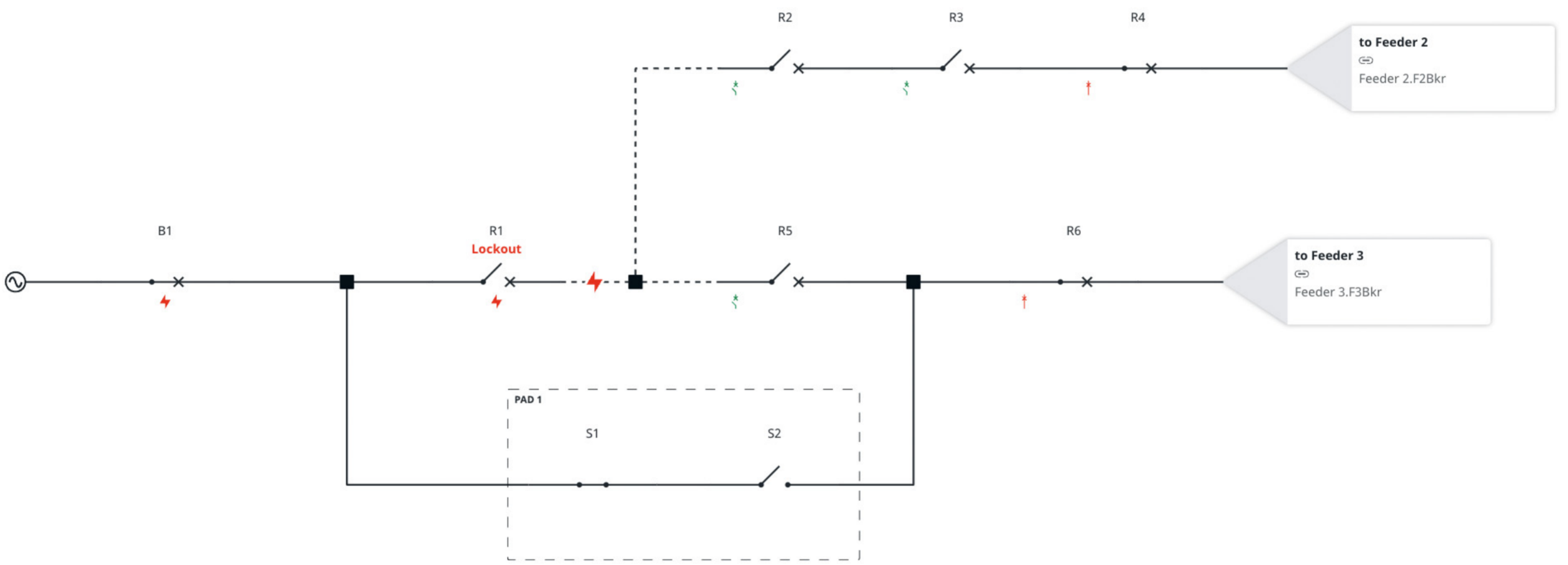
**Event End:** 2022-04-29 | 5:43:46.115 PM

**Duration:** 8.914 seconds

## Feeder State Before Restoration



## Feeder State After Restoration



## Device Details

Device	Previous Load (A/B/C)	Status Before Restoration	Status After Restoration
B1	115/115/115 amps	Closed	Closed
R1	80/80/80 amps	Open	Open
R2	20/20/20 amps	Closed	⚡ Open
R3	10/10/10 amps	Closed	⚡ Open
R4	0/0/0 amps	Open	⚡ Closed
R5	30/30/30 amps	Closed	⚡ Open
R6	0/0/0 amps	Open	⚡ Closed
S1	10/10/10 amps	Closed	Closed
S2	0/0/0 amps	Open	Open

## Post-Event Loading

**Initial Load Lost:** 80 amps

**Restored Load:** 40 amps

**Fault Zone Load Lost:** 30 amps

**Unrestored Load:** 10 amps

## Isolation Plan

### Control Commands (Executed in Parallel)

Open S2	Device was already open
Open R2	Completed at 5:43:43.189 PM
Open R5	Completed at 5:43:43.205 PM
Open R1	Device was already open
Open R3	Completed at 5:43:43.126 PM

## Restoration Plan

### Control Sequence 1

Close B1	Device was already closed
Close S1	Device was already closed

### Control Sequence 2

Send close request to to Feeder 3	Completed at 5:43:43.210 PM
Close R6	Completed at 5:43:46.111 PM

### Control Sequence 3

Send close request to to Feeder 2	Completed at 5:43:43.210 PM
Close R4	Completed at 5:43:46.113 PM

## Optimization Order

1. Minimize unrestored load
2. Minimize switching operations
3. Maximize margin

## Diagnostics

⚠ The zone bounded by [R3, R2] could not be restored. The neighbor(s) [to Feeder 2] did not have enough margin to restore this zone.